



Commercial Space



275sq
m



Shop2/268 Liverpool Road, Ashfield

\$20,000/month, terms negotiable

Ideally located in the heart of Ashfield's commercial centre and close to the station and transport, this retail space represents outstanding exposure.

Location Features:

- Modern, high-exposure shopfront with heavy foot and vehicle traffic.
- Generous 275sqm* of net lettable area, including bathroom facilities and kitchenette.
- Two secure basement car spaces with convenient access.
- Flexible lease terms and conditions to suit a range of businesses.
- Previously occupied by ANZ Bank – ideal for a wide variety of retail or commercial uses.

Property ID: L20099623

Property Type: Retail

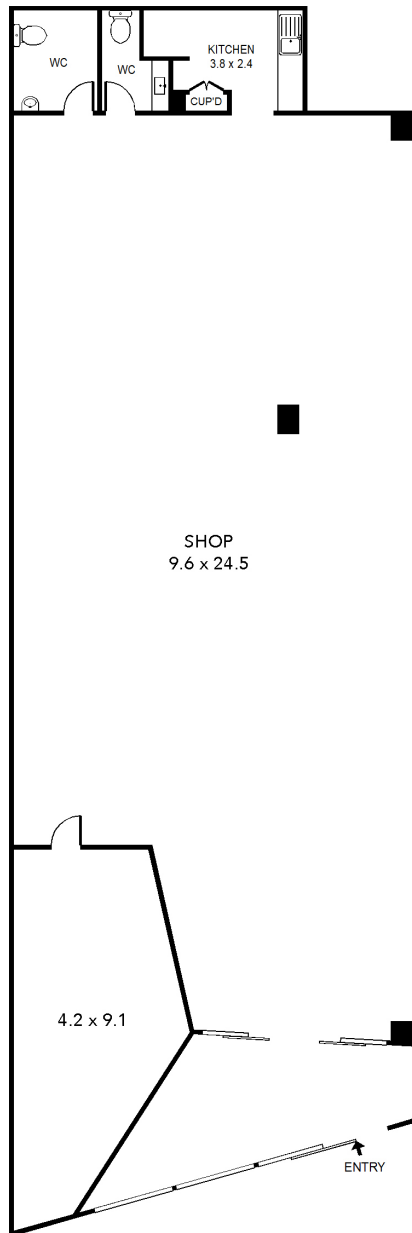
Building / Floor Area: 275

Land Area: 275.0 sqm

Tony Andreacchio

0418 967 900

tony.andreacchio@ashfield.rh.com.au



Shop 1/268 Liverpool Road, Ashfield

Raine&Horne®

Note: floor plan measurements are approximate and are intended for illustrative purposes only