



Perfect Space for Retail/Professionals in Newport's Main Street



54sq
m

Retail Shop/321 Barrenjoey Road, Newport

\$35,000 p.a. + GST + Outgoings

This street front retail shop is positioned in a prime location in Newport's retail and commercial hub, complimented by street parking outside the retail shop plus ample council car park at the rear street that caters for both business owners and their customers.

Nearby retail and commercial premises of blue chip tenants includes Coles supermarket, Woolworth outlet, BWS & 7-Eleven. With its convenient location and easy access to diverse range of specialty shops, café's, ocean beach, renowned gourmet restaurants, city transport and an abundance of amenities which compliments existing local businesses and or for any upcoming businesses in the close proximity.

- Ideal shop front space for retail or professional of 54sqm
- Including existing fixtures of shelves, light fittings, ceiling fans, air-condition unit and a separate store room/small office
- Sliding doors from the main street and side entrance for added convenience
- Approximately 30km from Sydney CBD

Property ID: L18897503

Property Type: Retail

Building / Floor Area: 54

Nina Sokolou

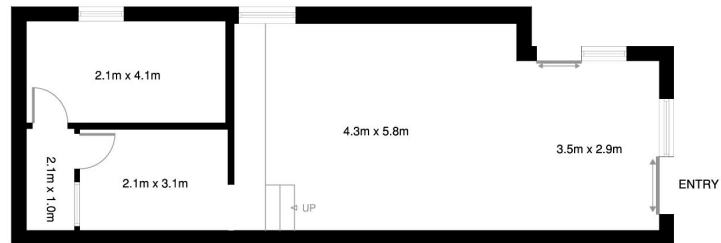
0411 465 076

nina.sokolou@apb.rh.com.au

For further information or to arrange an inspection please contact Nina Sokolou 0411 465 076

or nina.sokolou@apb.rh.com.au

All measurements are approximate. The information provided has been obtained from sources we believe to be reliable. However, we cannot guarantee its accuracy and interested parties should rely on their own enquiries.



NEWPORT
321 BARRENJOEY ROAD
*INTERNAL FLOOR AREA APPROX 54m²



*PLANS SHOWN ONLY INDICATIVE OF LAYOUT. DIMENSIONS ARE APPROXIMATE.
Floor plan supplied by V-Mark Design Pty Ltd. This floor plan is provided for indicative purposes only.
Measurements are approximate and not to scale. The vendor, agency and supplier will accept no liability for its accuracy. Interested parties are advised to make their own independent enquiries.