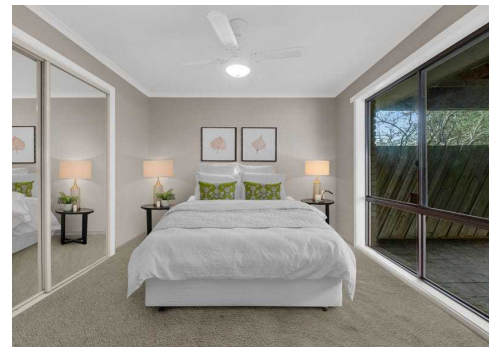




Invest or Nest in the Heart of Ballan



3



1



2

15 Jopling Street, Ballan

\$549,000 - \$589,000

Perfect First Home Or Investment Opportunity In The Popular Township Of Ballan.

A 3 bedroom brick veneer home set on approx. 660m2 providing the perfect opportunity to enter the popular Ballan property market.

This neat 3 bedroom home is centrally located close to schools, cafes and the Ballan Train station.

A four car carport with double fence provides secure off street parking and side access.

The house offers 3 bedrooms all with built in robes, 1 bathroom and a kitchen, dining and separate living area.

The updated bathroom offers a separate bath, shower, basin and vanity.

The home has roller shutters, ceiling fans in all the rooms, heated and cooled effectively with a gas heater and large reverse cycle air conditioning system in the main lounge and dining area.

The kitchen is neat and provides a gas oven and cook top with ample cupboard and bench space.

Property ID: L26338712

Property Type: House

Carports: 2

Land Area: 660.0 sqm

Priscilla Asi

0400 910 405

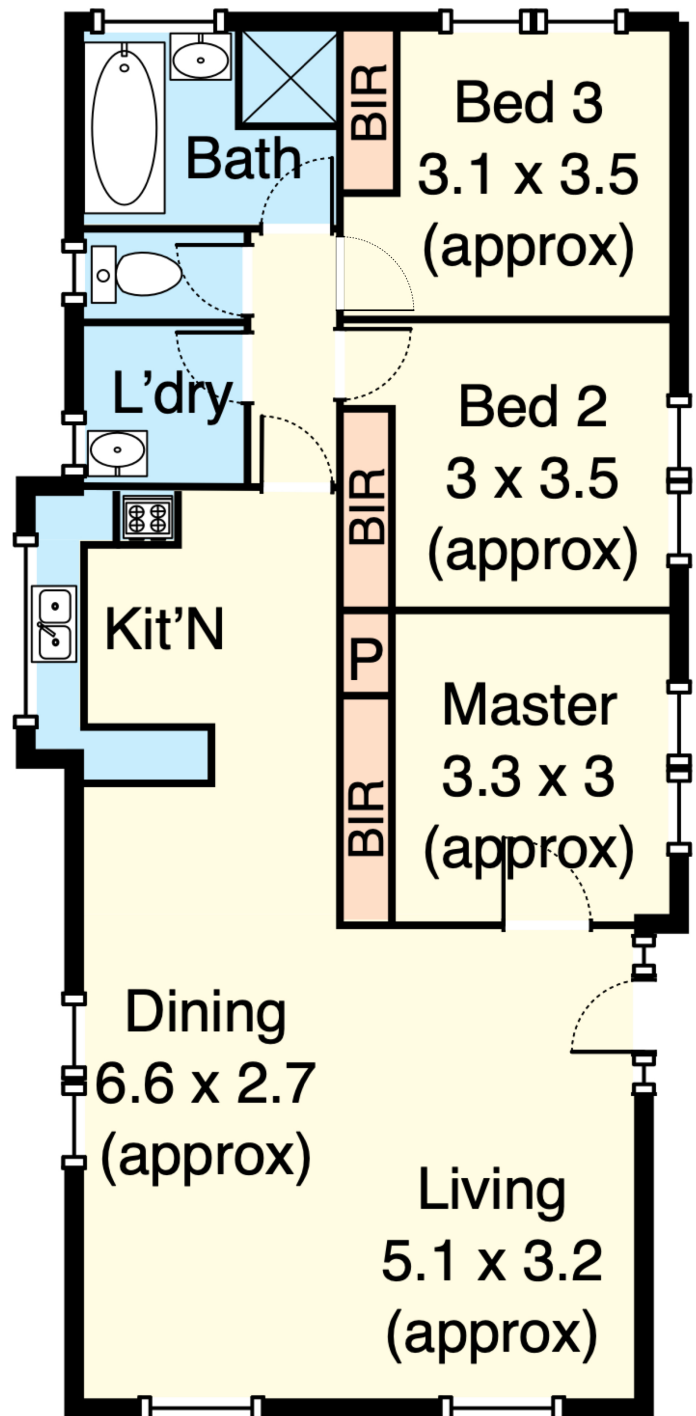
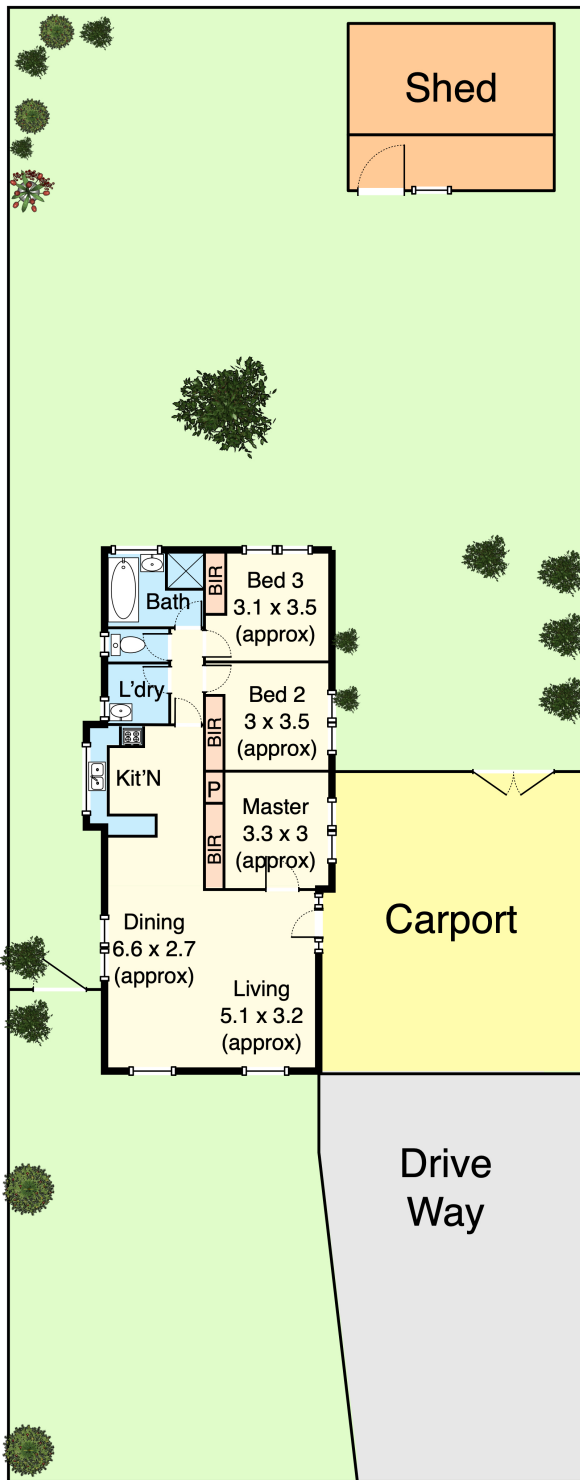
priscilla.asi@bacchusmarsh.rh.com.au

The backyard has a large workshop and is securely fenced and provides a lovely space for the kids and pets to play.

Ballan offers a peaceful regional lifestyle with an easy commute to Ballarat and Melbourne, shops, Doctors surgeries, supermarket and so much more.

Do not miss the opportunity to secure this home in the very popular Township of Ballan.

Don't miss your chance to own this one-of-a-kind home, get in touch today!



15 Jopling Street, Ballan, VIC - 3342

Floor Plan



*This floorplan is for illustration purposes only and no warranty is given to its accuracy. Purchasers are advised to carry out their own investigations.