

## Master-Built Full Brick House in a desirable Blue-Ribbon Location!



4



3



4

## 70 Laycock Street, Bexley North

Auctioned for \$2,618,000 (Jun 08, 2024)

Flowing over two impressively well-proportioned levels and opening to capture the light of a rear north-eastern aspect, this solid full brick home is perfectly positioned in one the suburb's most tightly held and desirable streets. Well-presented throughout and ready to occupy immediately, the home offers ample scope for further enhancement or personalisation to add future value.

- Four double-sized bedrooms with built in wardrobes, providing excellent space for the growing family
- A generous sized floor plan that is perfect for entertaining guests or spending time with loved ones
- Original timber kitchen with great cupboard storage and ample counter space for meal preparation
- Full sized main bathroom with large bath tub, additional bathroom on ground level, large internal laundry
- Grand main bedroom features a renovated ensuite and flows out to street-facing balcony

**Property ID:** L18183302

**Property Type:** House

**Garages:** 2

**Open Parking:** 2

**Land Area:** 645.0 sqm

**Theo Samos**

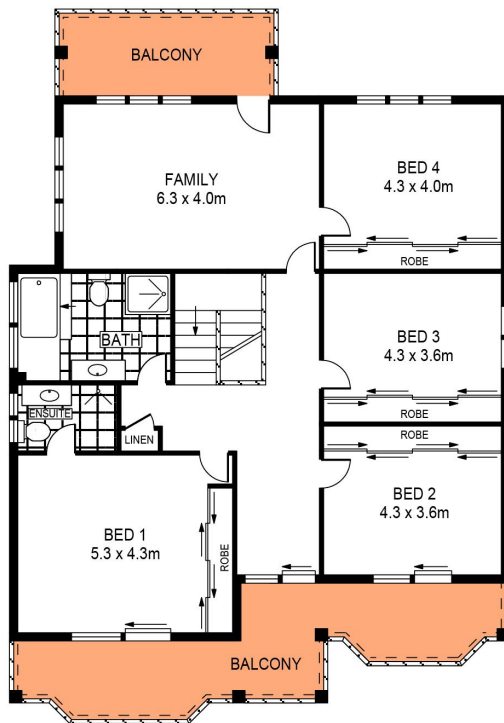
0413 759 098

theo@rhbp.com.au

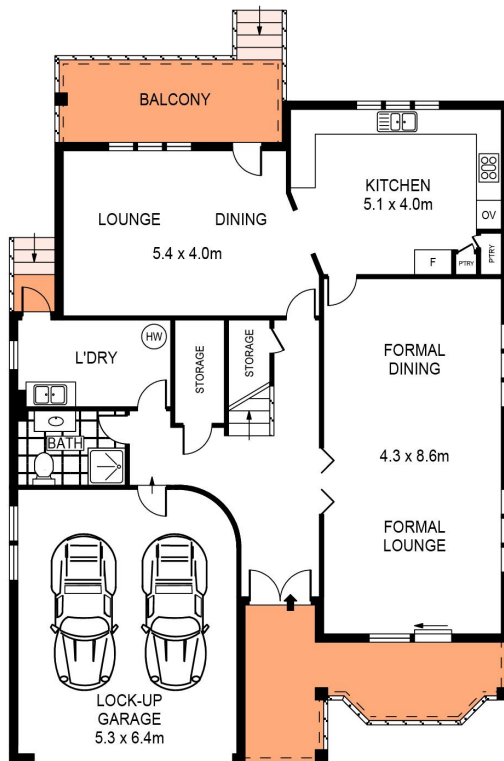
- Upstairs offers space for a designated study area plus a large family/rumpus room with rear balcony
- Double lock up garage with automatic door offers excellent storage, driveway with gated parking
- The level backyard offers privacy & tranquillity, overlooked by entertainment balcony
- Large formal dining and living room with polished timber flooring, open-plan family and casual meals area
- Local Schools include St. Ursula's College, Bexley North Public School & Kingsgrove High School
- Approx. 1.1km to Bexley North Railway Station, 400m to Gilchrist Park, 1km to Bexley Golf

#### Club

- Kingsgrove's shopping strip, eateries & cafes are located within 850m
- Easy access to M5 Motorway, Hurstville Shops & CBD, Sydney Airport
- Impressive land dimensions: 15.24m frontage x 42.67m depth.
- Total land size is approx. 645sqm



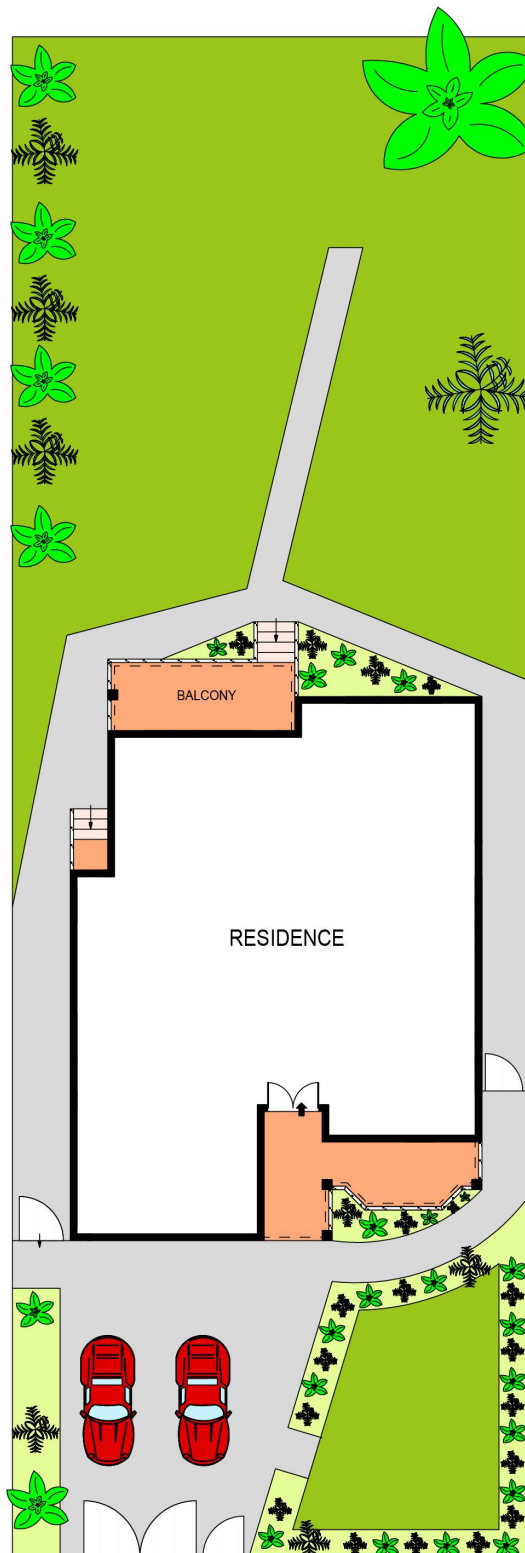
LEVEL ONE



ENTRY LEVEL

0 1 2 3 4 5  
SCALE (METRES)

PLANS SHOWN ONLY INDICATIVE OF LAYOUT. DIMENSIONS ARE APPROXIMATE.  
Ref. No: 109531



SITE PLAN  
(NOT TO SCALE)



70 LAYCOCK STREET

BEXLEY NORTH