

## Oversized One Bedroom Unit - Ultra Convenient Location



1



1



1

**205/11c Mashman Avenue, Kingsgrove**

**Sold for \$510,000 (Jul 16, 2024)**

Enjoying a North easterly aspect and an ultra-convenient location in the highly sought after Pottery Complex, this spacious one bedroom apartment offers an excellent opportunity for first home buyers, investors or those looking for a low maintenance modern day lifestyle. Security complex with lift access and oversized car space. With cafes, shops, transport at your door and easy access to M5 Corridor.

- Total area 91m2- Internal 68m2
- Generous Bedroom with built in robe and access to balcony
- Spacious open plan living and dining
- Modern kitchen, stone benchtop and ample storage
- Large bathroom tile floor to ceiling
- Balcony enjoying north easterly aspect with distant district views
- Internal laundry plus storage

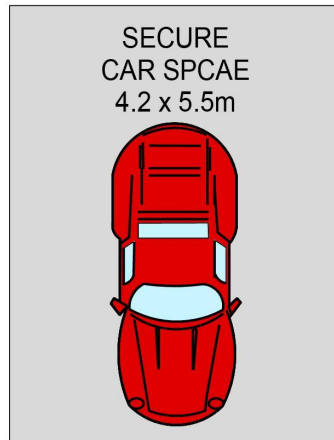
<b>Property ID:</b>	L25510429
<b>Property Type:</b>	Apartment
<b>Building / Floor Area:</b>	91
<b>Carports:</b>	1

**Con Klironomos**

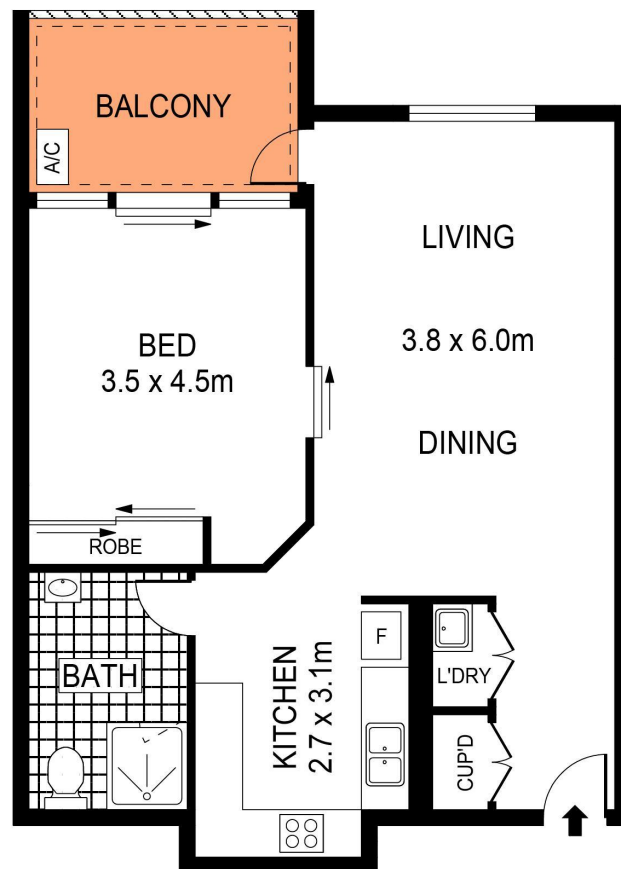
0417 213 296

con@rhbp.com.au

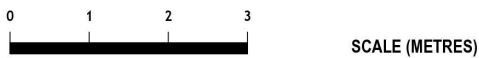
- Oversized secure car space
- Inspection is sure to impress



## BASEMENT



## LEVEL TWO



PLANS SHOWN ONLY INDICATIVE OF LAYOUT. DIMENSIONS ARE APPROXIMATE.  
Ref. No: 107481



205/11C MASHMAN AVENUE

KINGSGROVE