



Double- fronted brick home on a 638sqm block



4



1



3

2 Ada Street, Kingsgrove

Sold for \$1,950,000 (Jul 02, 2024)

Sitting proudly on the high side of Ada Street, this double fronted brick home offers bright and spacious interiors and benefits from an extended floorplan. Discover the convenience of easy access to Belmore and Kingsgrove Train Stations, along with proximity to Clemton Park Primary School & Kingsgrove North High School.

- Enjoy four generous bedrooms, three with built in wardrobes
- Excellent natural light within the grand open-plan living and dining areas
- Spacious kitchen with breakfast bar, beautifully polished timber flooring
- Period bathroom in excellent condition, large internal laundry
- Host gatherings in the undercover alfresco area overlooking the sparkling inground pool
- Benefit from wide side driveway access to the rear, providing secure undercover parking for 3 vehicles
- Perfect blueprint, move-in ready with scope to personalise to your taste and add value with renovations

Property ID: L27598236

Property Type: House

Open Parking: 3

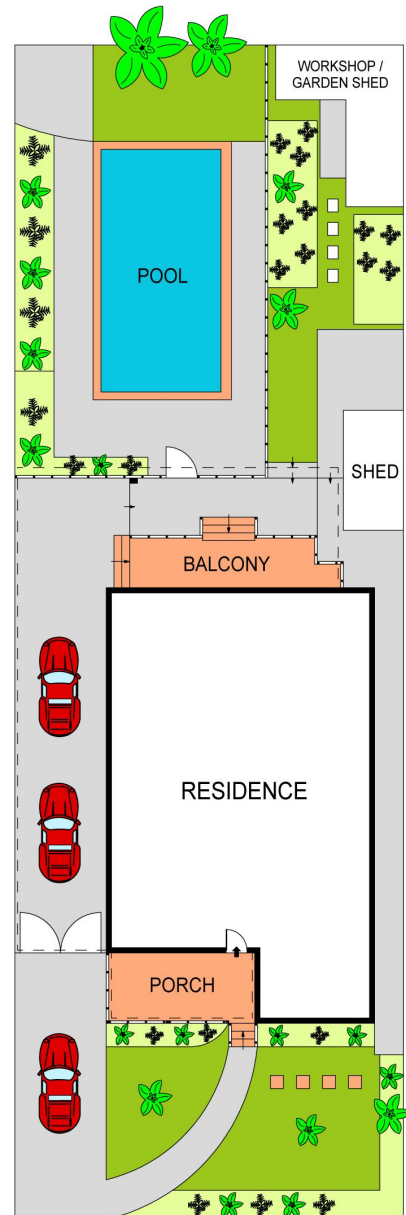
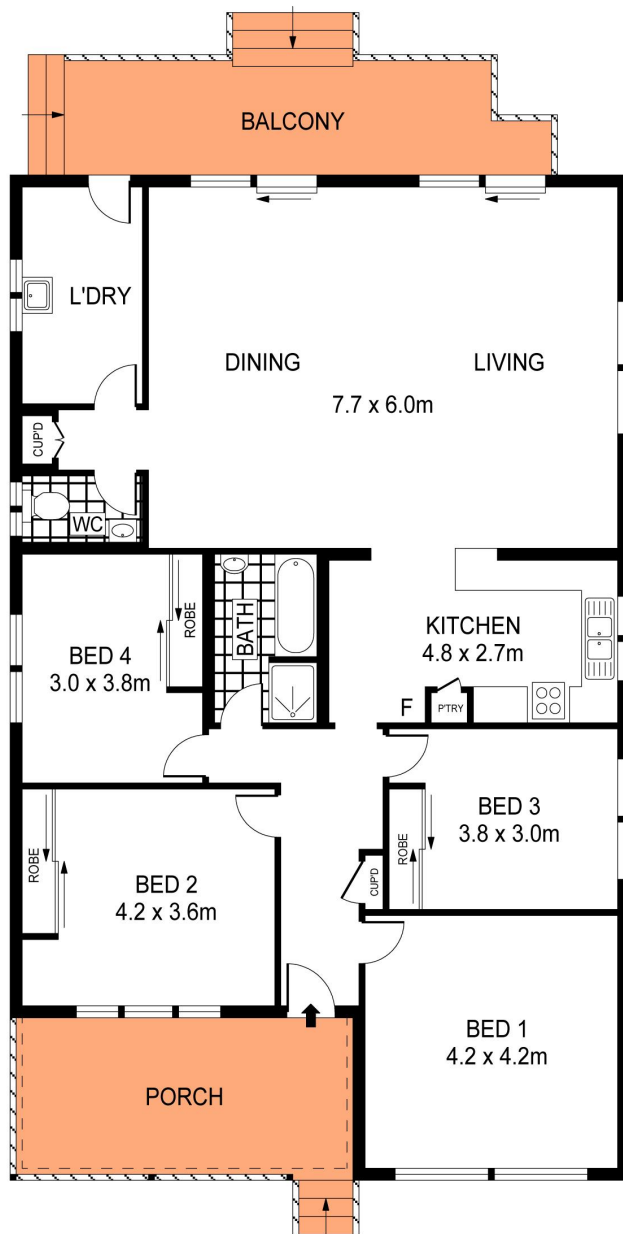
Land Area: 638.6 sqm

Steve Lembidakis

0411 804 155

steve@rhbp.com.au

- One of the largest blocks in the street, boasting a land size of approx. 638.6sqm with 13.7m frontage



SITE PLAN
(NOT TO SCALE)



PLANS SHOWN ONLY INDICATIVE OF LAYOUT. DIMENSIONS ARE APPROXIMATE.
Ref. No: 109532



2 ADA STREET

KINGSGROVE