

**Modern apartment with large private courtyard!**



2



2



1

**49/818-826 Canterbury Road, Roselands**

**Auctioned for \$531,000 (Jun 05, 2024)**

Auction Wed 5 June at The Rowers on Cooks River- 1 Levey Street, Wolli Creek from 6:30pm.

This elegant first-floor unit offers a harmonious mix of style and functionality, complemented by a private courtyard that adds a touch of outdoor luxury. Ideally positioned in a security complex, this property offers easy access to transportation, parks and recreational activities.

- Private Courtyard: Retreat to your own outdoor sanctuary
- Huge living and dining area that effortlessly flows outdoor
- Modern kitchen features gas cooking and great bench space
- The main bathroom is fully tiled and features a bathtub
- Dedicated secure parking space, internal laundry, new flooring
- Ensuite in the main bedroom, providing added comfort and privacy
- Approx. 1.4km from Lakemba train station, 1.2km from Clemton Park

**Property ID:** L27646054

**Property Type:** Apartment

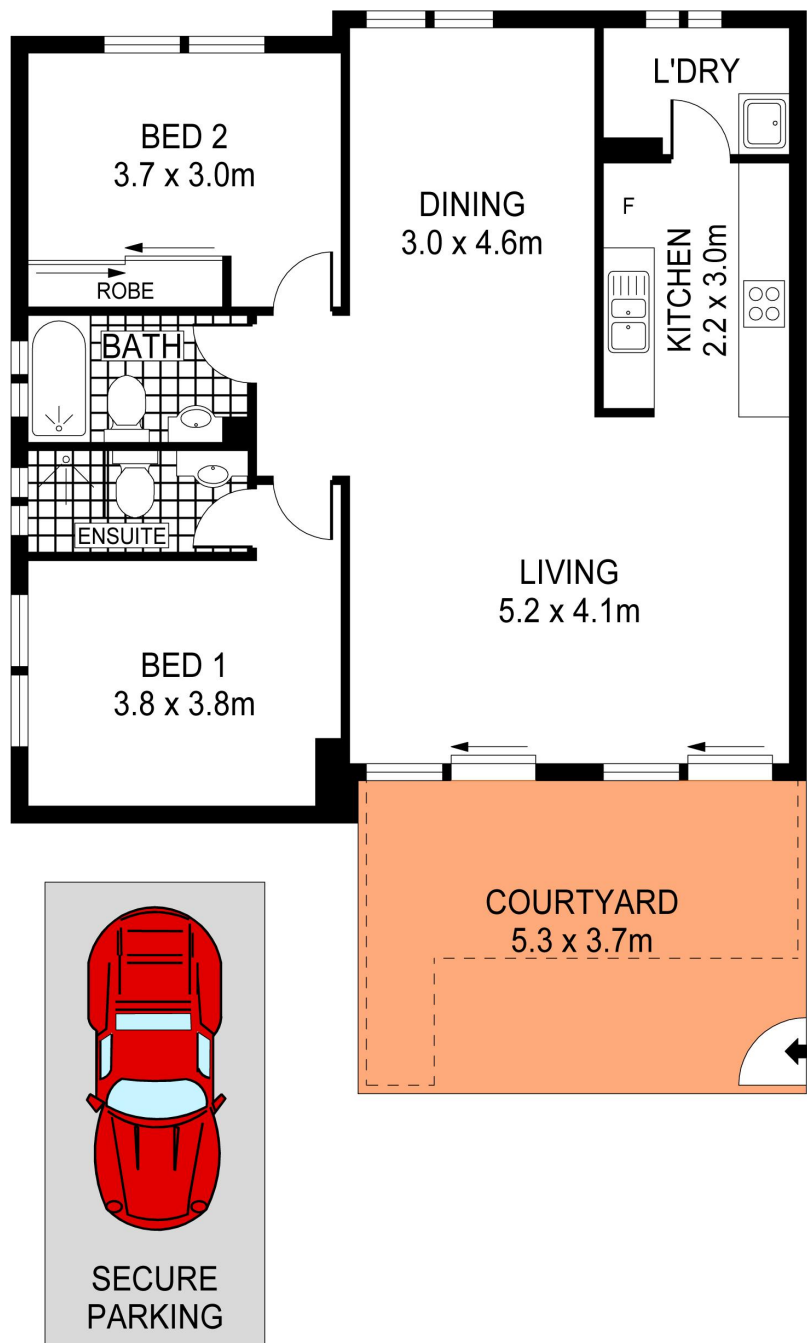
**Building / Floor Area:** 115

**Open Parking:** 1

**Theo Samos**

0413 759 098

theo@rhbp.com.au



PLANS SHOWN ONLY INDICATIVE OF LAYOUT. DIMENSIONS ARE APPROXIMATE.  
Ref. No: 109488

49/818-826 CANTERBURY ROAD

ROSELANDS