



Character Full Brick Home with Two Street Frontages



3



1



1

34 Leonora Street, Earlwood

Auctioned for \$1,900,000 (Jun 05, 2024)

Auction Wed 5 June at The Rowers on Cooks River- 1 Levey Street, Wolli Creek from 6:30pm.

This elegant Californian Bungalow exudes timeless charm and presents the opportunity for further personalisation and value enhancement. Situated in a tranquil and wide street, it offers great convenience with close proximity to Earlwood Public School & Bardwell Park Railway Station.

- Two street frontages with rear street access to a lock-up garage.
- Three spacious bedrooms plus a sunroom.
- Modern kitchen with gas cooking.
- Well-presented full-sized bathroom.
- Separate lounge and dining areas for flexible living.
- Features include polished timber flooring, high ornate ceilings, and picture rails.
- Conveniently located just 1km to Bardwell Park Railway Station and 700m to Earlwood

Property ID: L574802

Property Type: House

Garages: 1

Land Area: 405.0 sqm

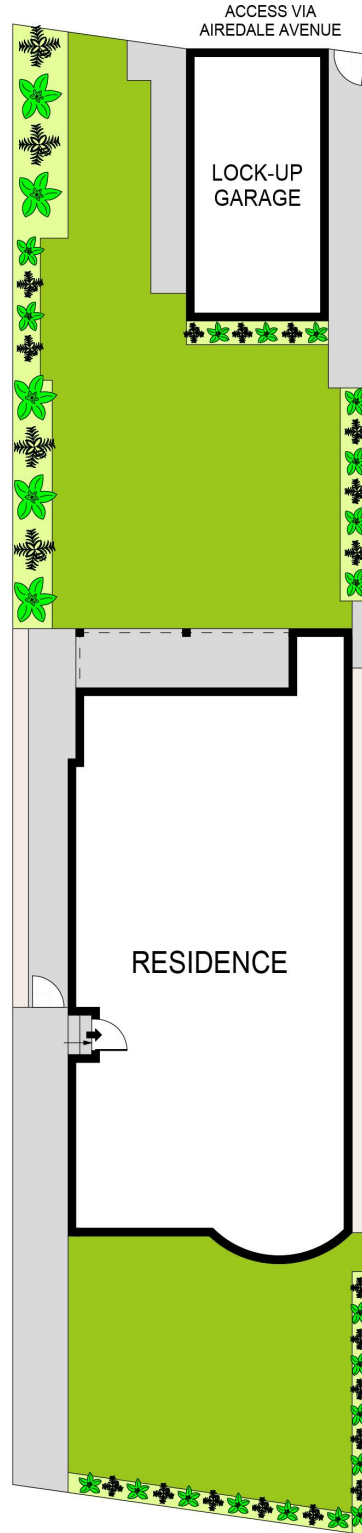
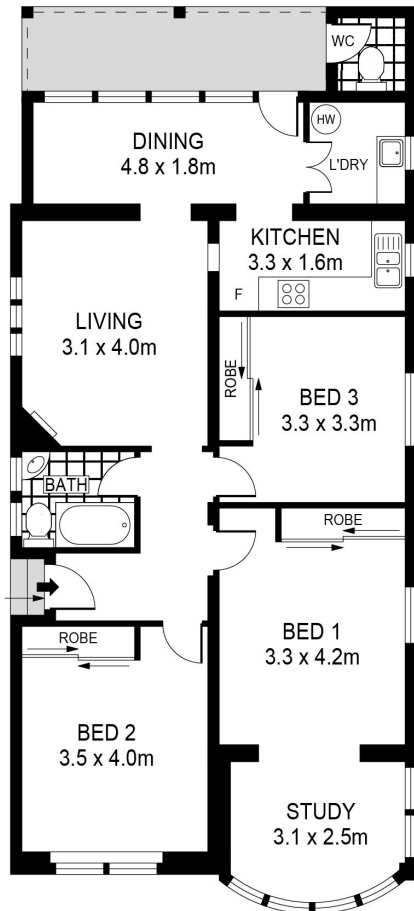
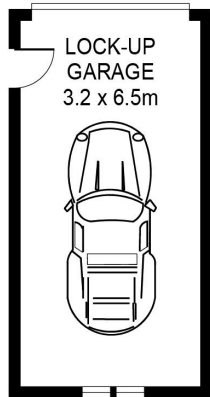
Theo Samos

0413 759 098

theo@rhbp.com.au

Public School.

- Enjoy ample garden space on the generous 405sqm land with excellent privacy.



SITE PLAN
(NOT TO SCALE)

0 1 2 3 4 5
SCALE (METRES)

PLANS SHOWN ONLY INDICATIVE OF LAYOUT. DIMENSIONS ARE APPROXIMATE.
Ref. No: 109534

34 LEONORA STREET

EARLWOOD

