

## Relaxed Sophisticated Country Living



4



3



3

## 86 Croziers Road, Jaspers Brush

Sold

Experience relaxed country living on approximately 5 acres (2.04 hectares) of gently undulating lawns, offering breathtaking views of adjoining farmland and mountain ranges. This exceptional property features multiple living zones perfect for entertaining, including a breakfast area. The modern kitchen, equipped with a butler's pantry, seamlessly connects to the expansive dining and lounge areas to enjoy alfresco living with stunning 180-degree views to the north and east.

The property boasts a large infinity-edge pool with a heated spa, surrounded by well-established garden and lawns. The master suite is situated in a private two-story wing and includes an ensuite and dressing room. Below the master bedroom is a versatile large space ideal for many uses and currently utilised as a wine cellar. There are three additional spacious bedrooms with adjoining bathroom. A dedicated home office a comfortable formal sitting room. Downstairs an extensive games room featuring a 3/4 snooker table, A very spacious bedroom, bathroom and laundry facilities. All have access to the outside terrace.

Additional features include \* three-car lockup garage, with separate shed for garden equipment and another for pool equipment. \*A portico entrance, and concrete driveways connected to the sealed road. \*Modern amenities include split system air conditioning and ceiling fans, a fire pit and town water. This prime location is just a short drive to the historic town of Berry, Shoalhaven surf beach, or to pick up all your shopping in Bomaderry, or Nowra.

**Property ID:** L28070279

**Property Type:** Lifestyle

**Garages:** 3

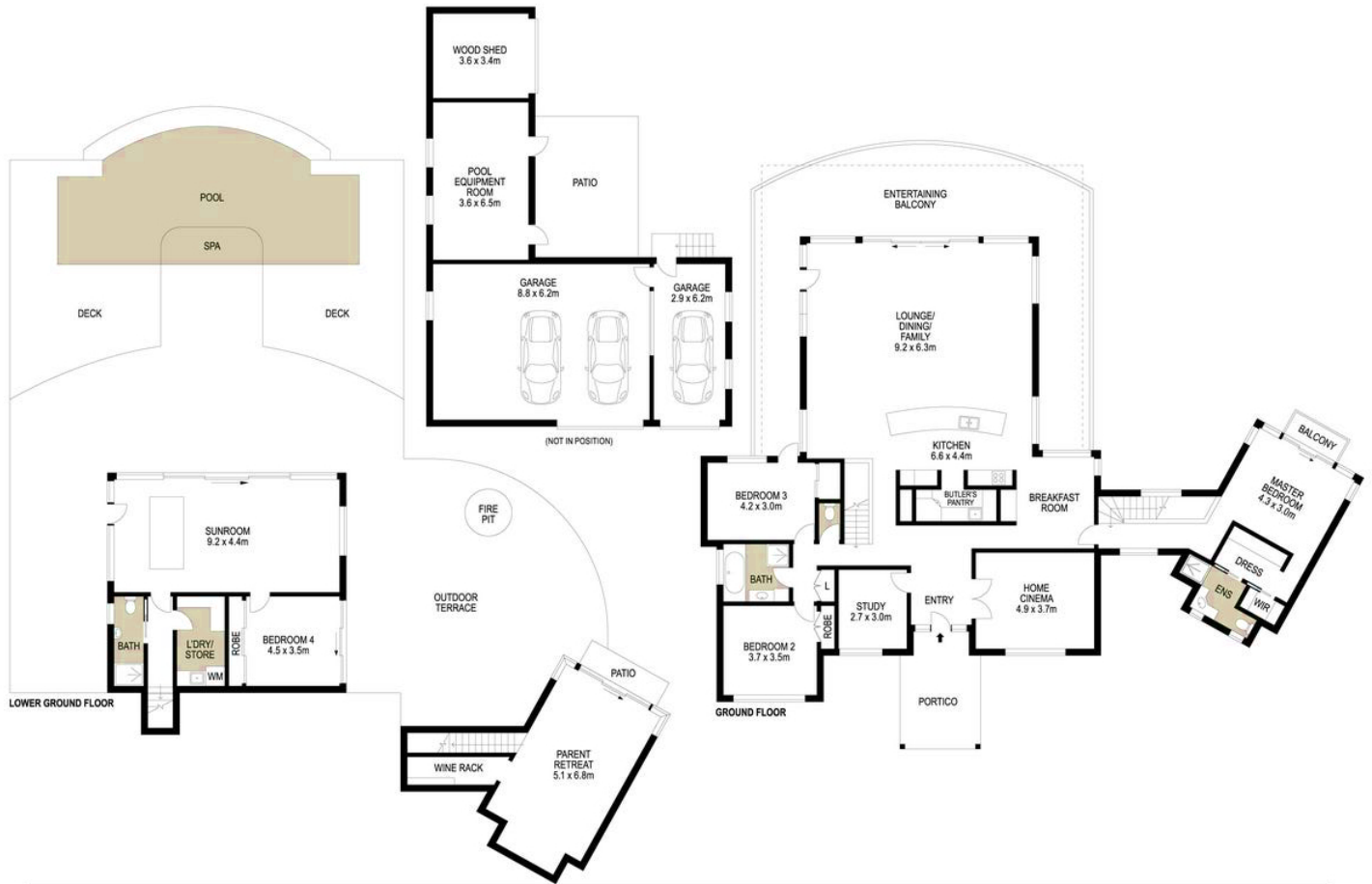
**Land Area:** 5.0 acres

**Jacqueline Crapp**

0429 104 011

[jacqui.crapp@berry.rh.com.au](mailto:jacqui.crapp@berry.rh.com.au)

This property offers an unparalleled lifestyle with its blend of luxury, convenience, and stunning natural beauty. Call Susie Timbs on 0414 767 707 to secure a private viewing.



Scale in metres. Indicative only. Dimensions are approximate. All information contained herein is gathered from sources we believe to be reliable. However we cannot guarantee its accuracy and interested persons should rely on their own enquiries. Prepared By Real FX Photography, Email: hello@realfx.photo Phone: 0439 387 347

86 Croziers Road, Jaspers Brush

**Raine & Horne**  
Berry