



Under Offer



3



1



2

8 Mayfair Court, Bomaderry

Sold

Situated on the top side of the street, this charming 3-bedroom house offers exceptional value and requires very little maintenance, making it perfect for its new owners. As you enter the home, you are welcomed by a large newly carpeted living area that seamlessly flows into a cozy dining space, continuing through to the well-appointed kitchen and then out into the inviting yard.

This sturdy brick and tile home boasts three generously sized bedrooms, a spacious bathroom complete with a bath, and ceiling fans to ensure comfort during warmer months. The front and rear lawns are easy to care for, and the property is fully fenced at the rear, providing a private yard for relaxation or entertainment.

Additional features include a renovated bathroom and reverse cycle air-conditioning for year-round comfort.

The house is set on a 427 sqm (approx) block of land and offers the convenience of internal access from the double garage directly into the home. The garden also features a small shed to cater for your gardening needs. This property presents an ideal opportunity for first home buyers, investors, or those looking to downsize without compromising on quality or comfort.

Just moments away, you'll discover a variety of quality schools, medical facilities, and shops,

Property ID: L28106538

Property Type: House

Building / Floor Area: 114

Garages: 2

Land Area: 427.0 sqm

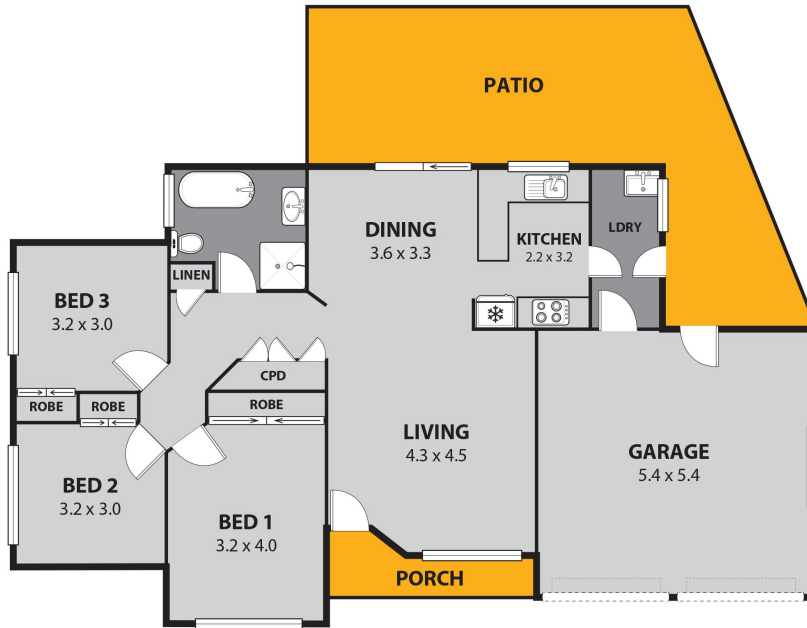
Jacqueline Crapp

0429 104 011

jacqui.crapp@berry.rh.com.au

along with the lively lifestyle hubs of Berry and Bomaderry. The stunning beaches of Jervis Bay are only a short drive away, and the nearby bypass provides easy access to larger cities, making commutes to Sydney or Wollongong straightforward and convenient.

At 8 Mayfair Court, Bomaderry embrace a lifestyle of peace and privacy with all the benefits of urban living. This house is an excellent opportunity for those seeking a quiet and convenient home. Contact Tim Muckenschnabl on 0407 356 631 or Jacqui Crapp on 0429 104 011 to schedule a private viewing.



8 MAYFAIR CT, BOMADERRY

INTERNAL SPACE	123m ² (approx)
EXTERNAL LIVING	36m ² (approx)
TOTAL AREA	159m ² (approx)



Plans shown are for presentation purposes and are not part of any legal document or title and are subject to errors, omissions, inaccuracies and should not be used as sole and accurate reference. Particulars given are for general information only and do not constitute any representation on the part of the vendor or agent. No liability will be accepted.

Louka
wearelouka.com