



Historical Elegance in Prime Berry Location



3 2 2

33 George Street, Berry

Sold for \$1,750,000 (May 24, 2024)

Step into a harmonious blend of classic charm and modern comfort with this meticulously maintained late-1940s residence, nestled in the heart of the vibrant Berry community. 33 George Street, set upon 556 sqm (approx.) offers a rare opportunity to secure a piece of history, beautifully preserved and thoughtfully updated to meet contemporary living standards.

Boasting three generously sized bedrooms, each fitted with practical built-in robes, this home is perfectly suited for families or those seeking space and elegance. The residence features two recently renovated bathrooms, ensuring a blend of style and functionality.

The heart of this home is undoubtedly the open-plan kitchen, equipped with a walk-in pantry, and complemented by stunning Blackbutt timber hardwood flooring that flows seamlessly throughout the living spaces. High ceilings adorned with ornate cornices elevate the sense of space and grandeur, capturing the historical essence of this beautiful home.

Designed for year-round comfort, the property includes four reverse cycle air-conditioning units and a cozy slow combustion Saxon Fireplace with a custom granite hearth, creating a warm and inviting ambience during the cooler months.

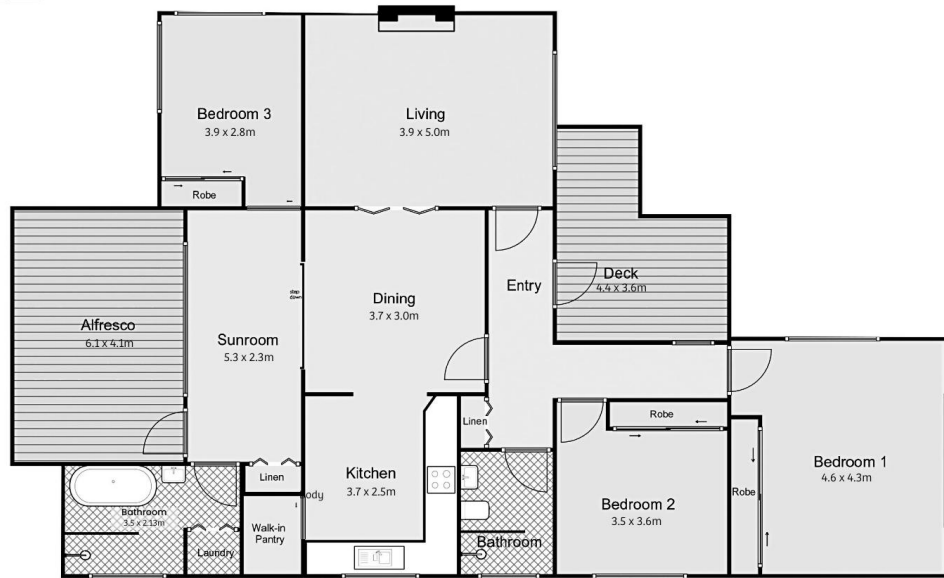
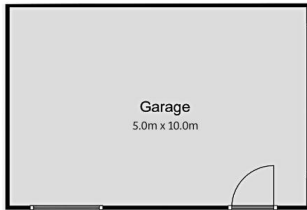
Entertain or relax in the level backyard with a timber alfresco deck, a peaceful and private outdoor retreat. Additionally, the convenience of a lock-up garage with power addresses all

Property ID:	L983949
Property Type:	House
Garages:	2
Land Area:	556.0 sqm

Jacqueline Crapp  
0429 104 011  
jacqui.crapp@berry.rh.com.au

your storage and parking needs.

Don't hesitate to contact Jacqui Crapp or Tim Muckenschnabl on 0476 500 847 to secure a viewing!



**33 George Street, Berry**

This floor plan including furniture, fixture measurements and dimensions are approximate and for illustrative purposes only.  
Raine & Horne Berry gives no guarantee, warranty or representation as to the accuracy and layout.  
All enquiries must be directed to the agent, vendor or party representing this floor plan.