



Superb north east facing apartment in the district's finest complex



1



1



1

209/165 Frederick Street, Bexley

Sold for \$520,000 (Apr 18, 2024)

This stunning light filled apartment merges a striking contemporary layout with premium finishes and resort-like inclusions. Situated within 'The Chandler', an innovative building by Fox Johnston architects, it promises effortless entertaining with access to a sweeping common lawn, expansive barbecue area and sparkling in-ground pool. Floor-to-ceiling glass stacker doors open to a generous deck with district and bay glimpses, providing the perfect place to relax. It presents an outstanding lifestyle opportunity with village shops, cafés and transport just footsteps away. Parks, leisure facilities and sporting fields are all within walking distance, while both Rockdale and Hurstville shopping precincts are just minutes away. With easy access to Sydney Airport and the CBD, this north east facing apartment is an ideal low maintenance choice.

- Bright living zone with stylish décor integrates with the outdoors
- Generous deck enjoys peaceful view, ideal for entertaining or relaxing
- Sleek kitchen has gas stove, mirrored splashback and Bosh appliances
- Generous master with mirrored built-in robe and light filled study nook
- Bathroom showcases quality finishes and monochrome tile feature wall

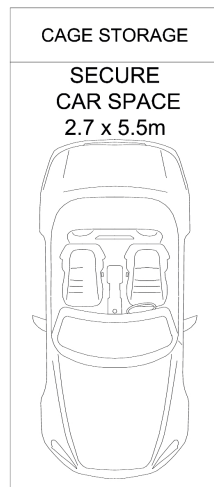
Property ID:	L20618419
Property Type:	Apartment
Building / Floor Area:	68
Garages:	1

Sam Epsimos

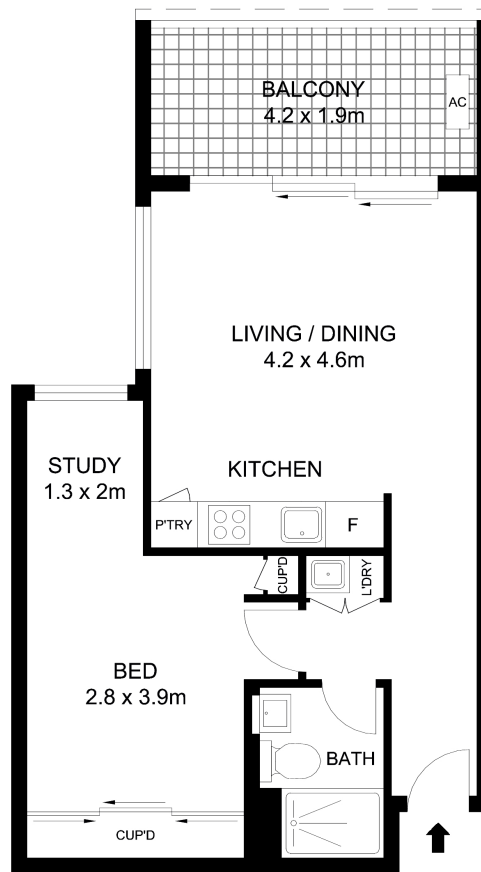
0402 373 274

sam.epsimos@bexley.rh.com.au

- European laundry zone, air conditioning, ample storage space, intercom
- Level two of beautifully presented and secure complex with lift access
- Single car space and storage cage in B2, locked basement level car park
- Walk to Bexley shops, Rockdale Station, Bardwell Valley Golf Club



Basement Two



Second Floor

