



Invest or Occupy, the choice is yours



91sqm  1

12 Dunkerley Place, Waterloo

For Sale \$975,000 - \$1,070,000

12 Dunkerley Pl, Waterloo is a rare opportunity to secure a 91sqm (approx.) multi-purpose, dual-level commercial space in a tightly held Rise precinct, in the heart of Waterloo.

The location boasts a vibrant community atmosphere, making it an ideal spot for businesses in almost any industry.

Don't miss out on this rare opportunity to secure a prime location in one of the most sought-after areas in Waterloo.

Key Highlights:

- Strong return over two separate tenancies
- Current return \$69,800 with increases due
- Modern, Industrial inspired office/retail fit out
- Timber look floors, solid timber stairs, air-conditioning and kitchenette
- Secure basement car parking allocated on title

Property ID: L23617512

Property Type: Retail

Building / Floor Area: 91

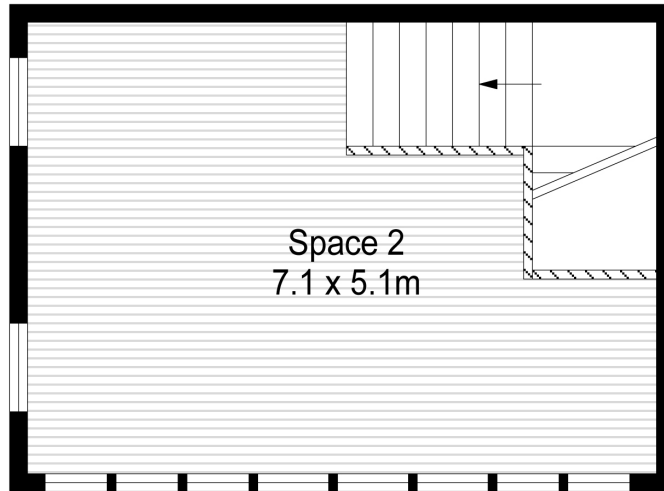
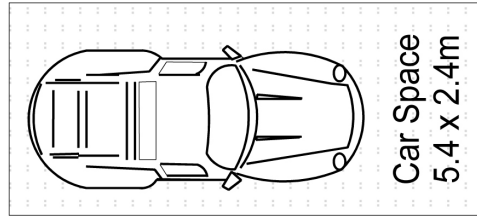
John Gymellas

0424 192 787

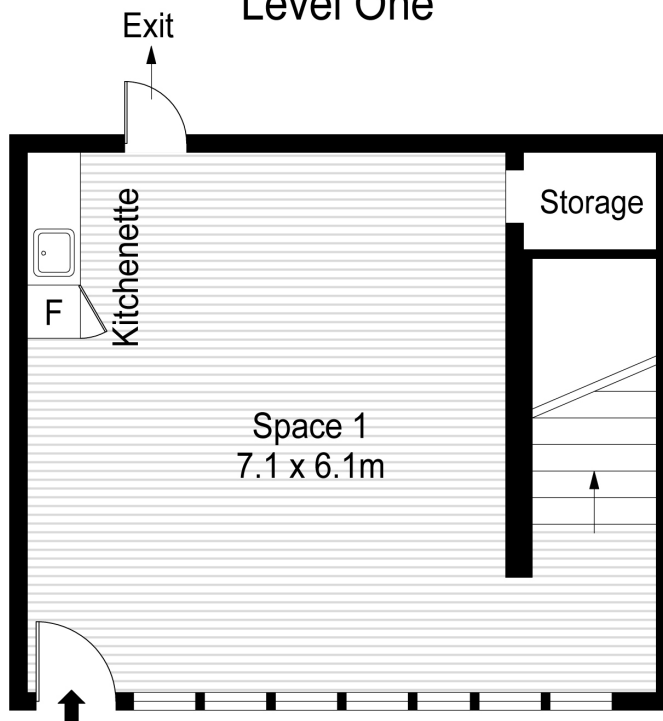
john.gymellas@bexley.rh.com.au

- Customer parking within the complex & full loading dock
- Ideal for the following uses professional services, showroom, health and wellness, beauty – possibilities are endless.
- Only 5km* from Sydney CBD and 900m from Green Square train station.
- Zero Vacancy rate with tenants in waiting

Rare investment opportunity not to be missed, call or email to get more information.



Level One



Entry Level

This floor plan including furniture, fixture measurements and dimensions are approximate and for illustrative purposes only. BoxBrownie.com gives no guarantee, warranty or representation as to the accuracy and layout. All enquiries must be directed to the agent, vendor or party representing this floor plan.

12 Dunkerley Place, Waterloo