



Second Time Offered To Market In Over 100 Years



4



2



3

6 Haig Street, Bexley

Auctioned for \$1,950,000 (Nov 01, 2023)

Presented to the market for only the second time since construction in 1920, this classic Federation residence is a reminder of original early c20th traditional craftsmanship.

With original features that include soaring detailed ceilings, the interiors are functional and liveable as is, though there is incredible scope to fully enhance the home further with refurbishment, reconfiguration, extension or complete development, subject of course to council approval.

On an impressive 765sqm level parcel that opens to embrace the light of a rear north-east aspect, it is just a walk to village amenities 1.9km to Carlton station and 4.7km to the beach.

- With separate adjoining lounge and dining areas
- Double bedrooms, second with built-in wardrobe
- Functional 1970s kitchen has electric appliances
- Secure single garage, ample off street parking
- Vast rear garden with sun-drenched level lawns

Property ID: L24462368

Property Type: House

Garages: 1

Open Parking: 2

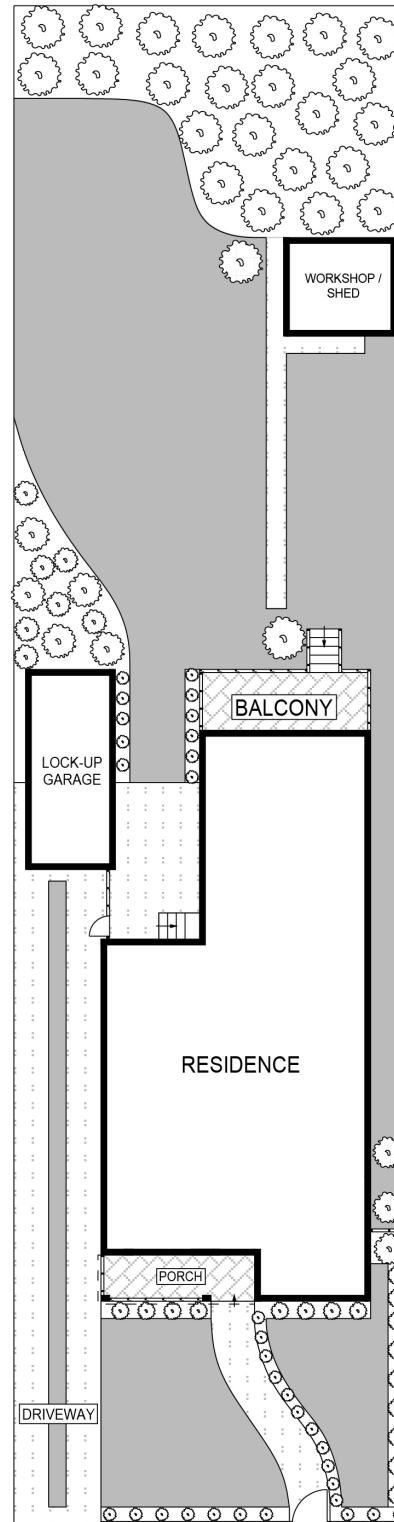
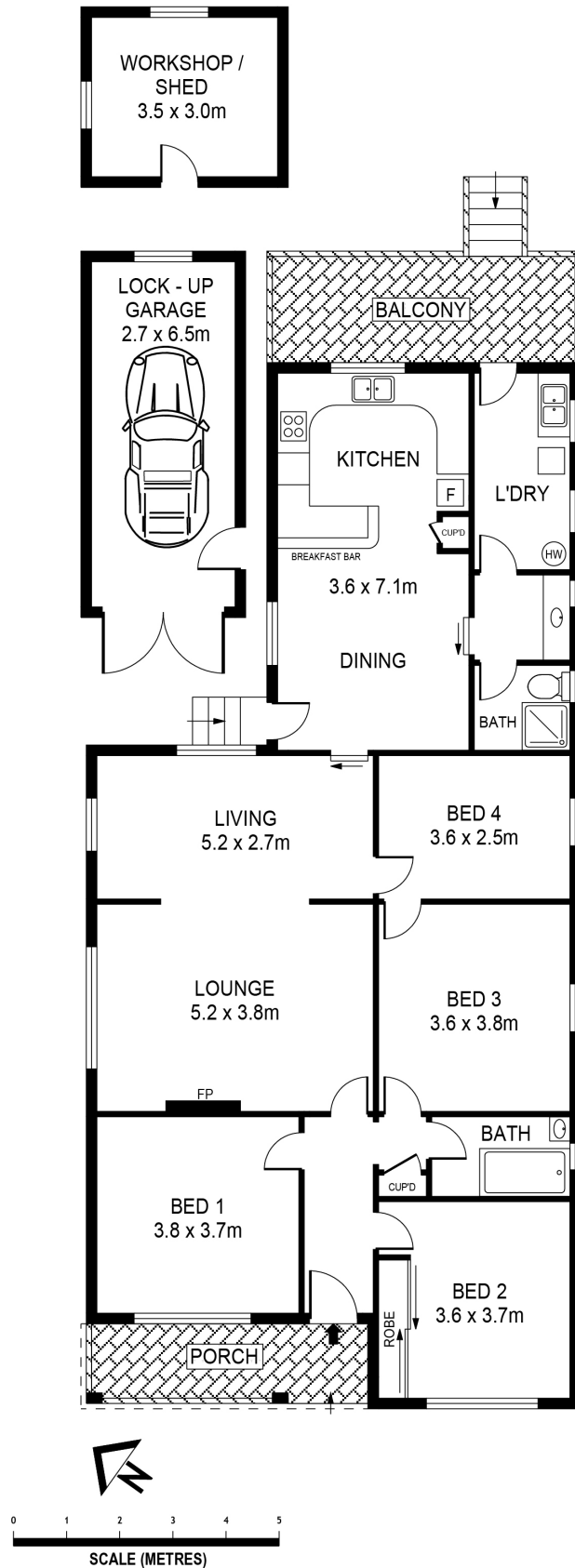
Land Area: 777.0 sqm

Marc Gable

0433 493 331

marc.gable@bexley.rh.com.au

- Incredible chance to build a masterpiece, STCA
- Well set just 2.2km to Bardwell Valley Parklands
- A rare chance to enter a tightly held community
- 13.7m Frontage approx



SITE PLAN
(NOT TO SCALE)

WE BELIEVE THE INFORMATION IN THIS DOCUMENT TO BE RELIABLE. HOWEVER INTERESTED PERSONS SHOULD MAKE THEIR OWN ENQUIRIES. DIMENSIONS ARE APPROXIMATE.