



Ground Level Studio In Prime Location



1



1



1

**38/555 Princes Highway, Rockdale**

**Sold for \$405,000 (Sep 20, 2024)**

This well-maintained studio apartment showcases immaculate interiors and seamless entertaining. Boasting a harmonious blend of low-maintenance living and stylish design, the residence

offers a delightful lifestyle in a highly sought-after and convenient locale.

- Enjoy resort-style living in a contemporary complex
- Spacious studio with built-ins and abundant natural light
- Open-plan living and dining area
- Strategically positioned windows for ample natural light and cross-flow ventilation
- Modern kitchen equipped with gas stainless steel appliances
- Ground-floor location for added convenience
- Sought-after and well-maintained complex

**Property ID:** L26737350

**Property Type:** Apartment

**Building / Floor Area:** 57

**Open Parking:** 1

---

**David Travers**

0415 253 706

david@bexley.rh.com.au

- Stylish bathroom with a generous-sized shower
- Security car space with internal access
- Access to swimming pool, gym, BBQ area, and communal gardens
- A brief two-minute stroll to Rockdale train station, bus stops, and diverse shopping options

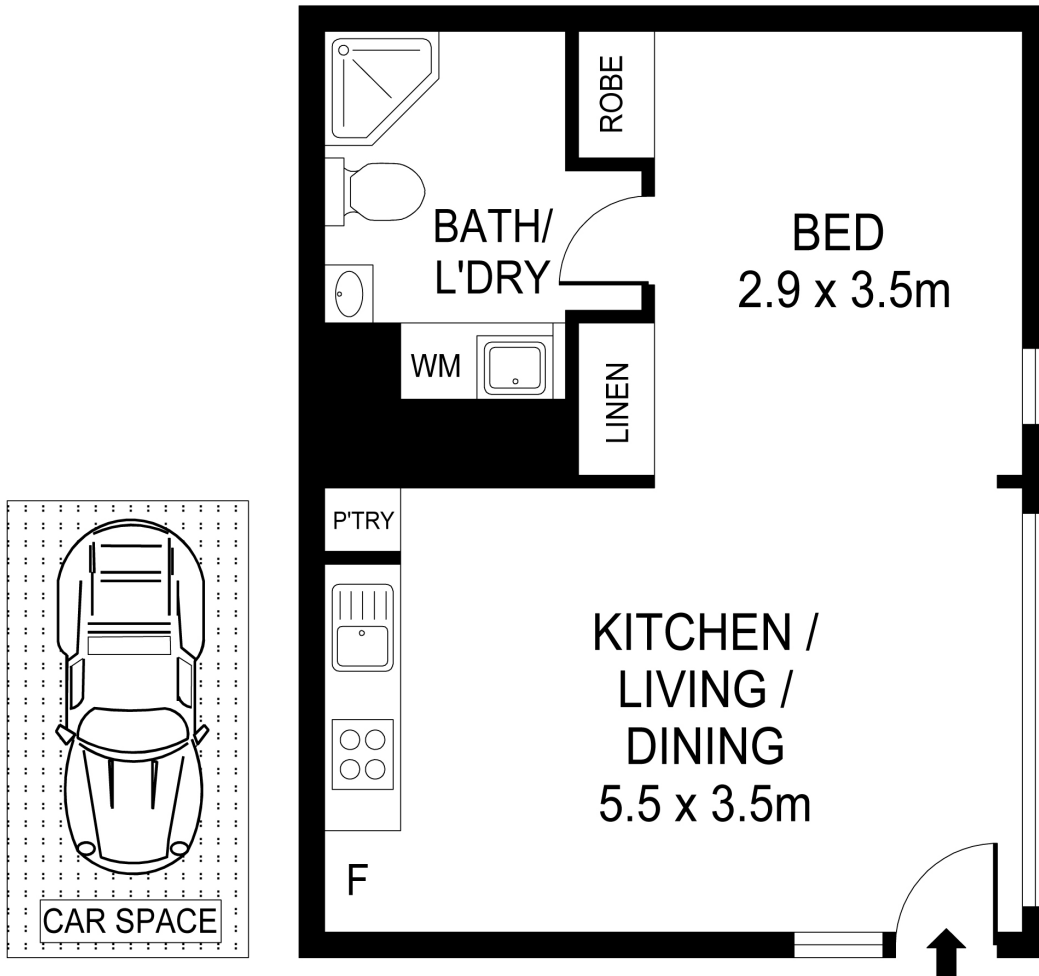
Total floor area 57 sqm

Internal area 43 sqm

Rates: Council \$275 per quarter\*

Water \$180 per quarter\*

Strata \$760 per quarter\*



WE BELIEVE THE INFORMATION IN THIS DOCUMENT TO BE  
RELIABLE. HOWEVER INTERESTED PERSONS SHOULD MAKE  
THEIR OWN ENQUIRIES. DIMENSIONS ARE APPROXIMATE.