



Elevated Ground Floor Unit, Walking Distance to Train Station



3



1



1

1/9 McCourt Street, Wiley Park

Sold for \$480,000 (Jul 01, 2024)

Situated in a complex of just 12 units, this property offers a great opportunity for a first home buyer or investor looking to add to their property portfolio. Located only a short stroll to shops, schools, cafes and public transport. This property is a must see.

- Sun-lit living area and separate dining space
- Eat-in kitchen with dishwasher and electric appliances
- Three generous sized bedrooms, all with built-in robes
- Floor to ceiling tiled bathroom with internal laundry facilities
- Allocated car space, less than a 10 minute walk to Wiley Park Station

Property ID: L26877864

Property Type: Unit

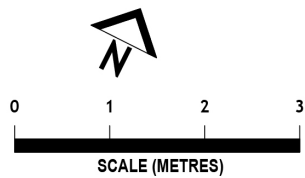
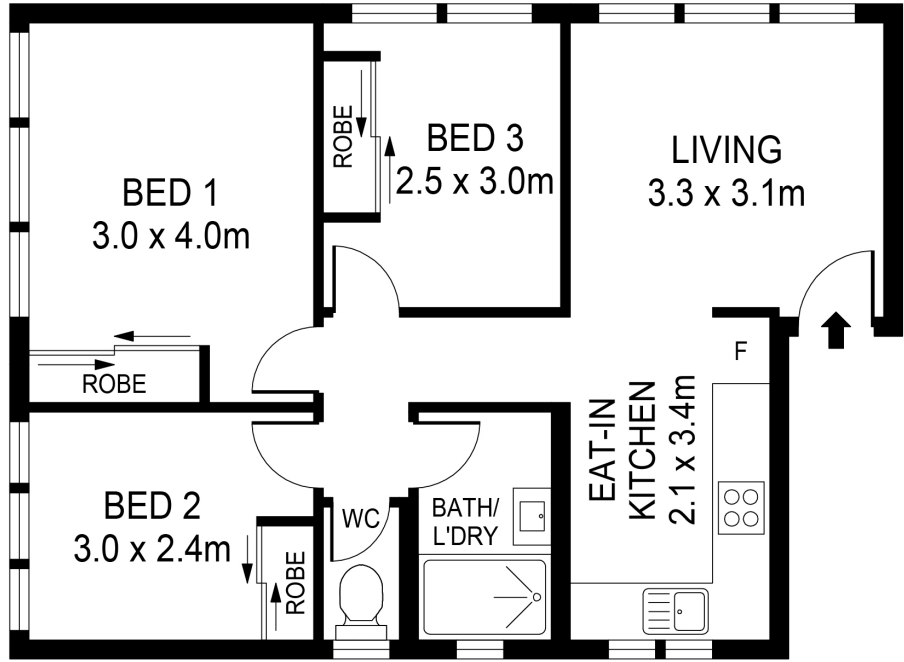
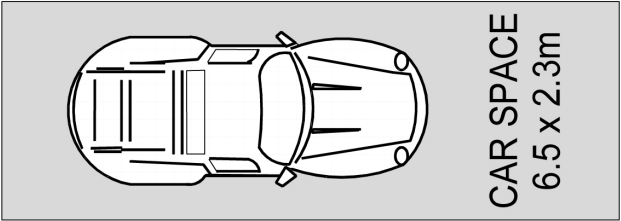
Building / Floor Area: 62

Garages: 1

Peter Georgiou

0423 310 600

peter.georgiou@bexley.rh.com.au



WE BELIEVE THE INFORMATION IN THIS DOCUMENT TO BE
RELIABLE. HOWEVER INTERESTED PERSONS SHOULD MAKE
THEIR OWN ENQUIRIES. DIMENSIONS ARE APPROXIMATE.