

Discover Your Next Investment Opportunity



2



1

## 160 Stoney Creek Road, Bexley

Sold for \$770,000 (Aug 30, 2024)

Introducing 160 Stoney Creek Road, Bexley, a mixed use commercial and residential property that's ripe for transformation. This iconic property, once home to one of Bexley's most beloved takeaways, is now ready to be reinvented.

Situated in a hub of convenience, just moments away from eateries and schools, its ideal for any business.

### Features Include:

- Shop conveniently located at front of the home with access to living areas
- Two large bedrooms, an original bathroom and a generously sized rear storage space
- Moments from Bexley Park, Bexley North Station and the Angelo Aquatic Centre
- E1 Zoning and scope for further development (subject to council approval)

Property ID: L27122936

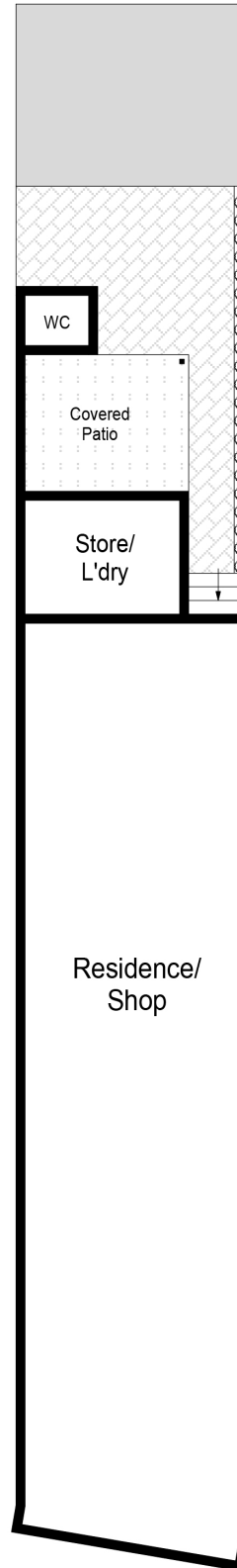
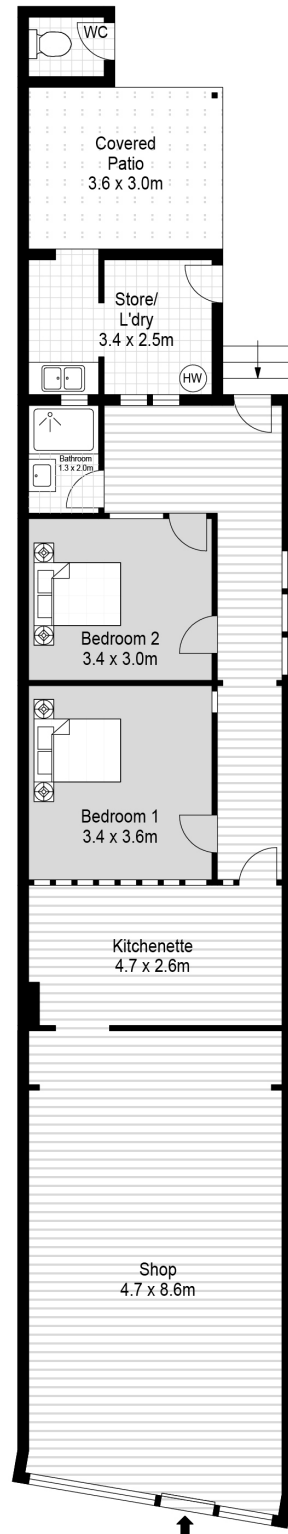
Property Type: House

Land Area: 196.0 sqm

### Marc Gable

0433 493 331

marc.gable@bexley.rh.com.au



Site Plan

INT : 95m<sup>2</sup>  
EXT : 11m<sup>2</sup>

This floor plan including furniture, fixture measurements and dimensions are approximate and for illustrative purposes only.  
BoxBrownie.com gives no guarantee, warranty or representation as to the accuracy and layout.  
All enquiries must be directed to the agent, vendor or party representing this floor plan.

160 Stoney Creek Road, Bexley