



Parkside Living



2



1



1

7/270-272 King Georges Road, Roselands

Sold for \$440,000 (Jun 13, 2024)

This sun-lit residence is located in a complex of just 12 units and offers an excellent opportunity for the first home buyer or investor looking to get into the market. Only a short drive to Beverly Hills Train Station and less than a 10 minute walk to Beverly Hills North P.S and easy access to M5 corridors.

- Open plan living and dining area with adjoining balcony overlooking John K Stewart Reserve
- Two generous, sun-lit bedrooms, main with built-in wardrobe
- Eat-in kitchen with ample storage space
- Tiled bathroom with separate bath-tub and shower
- Undercover car space, separate laundry plus storage
- Short drive to Roselands Shopping Centre, school's and café's

Property ID: L27547204

Property Type: Unit

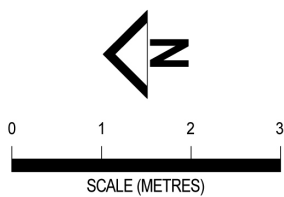
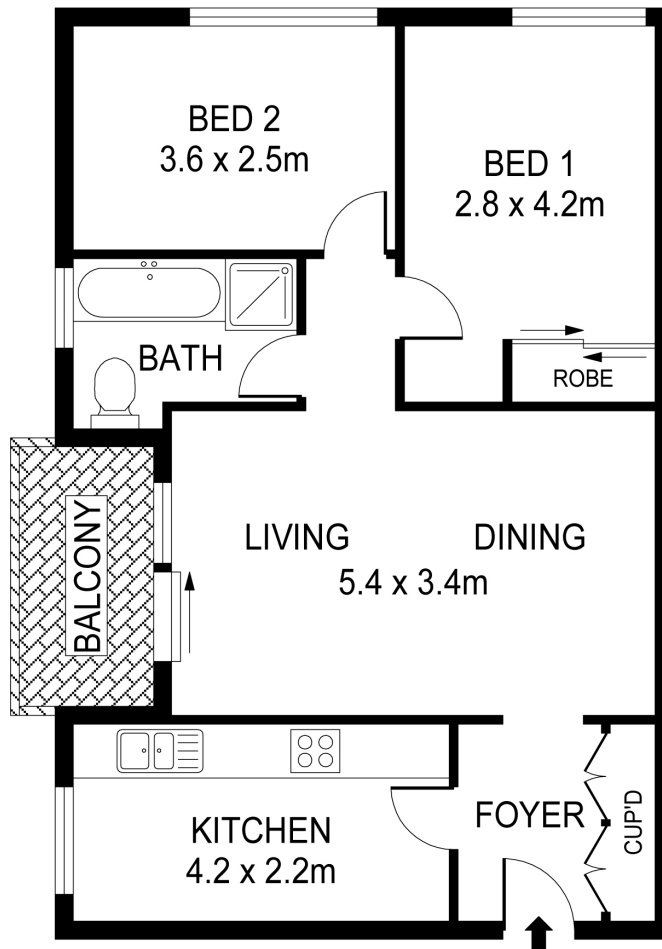
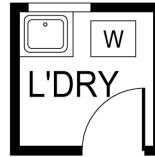
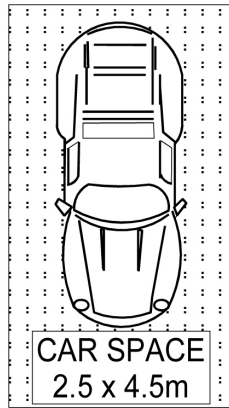
Building / Floor Area: 87

Garages: 1

Peter Georgiou

0423 310 600

peter.georgiou@bexley.rh.com.au



WE BELIEVE THE INFORMATION IN THIS DOCUMENT TO BE
RELIABLE. HOWEVER INTERESTED PERSONS SHOULD MAKE
THEIR OWN ENQUIRIES. DIMENSIONS ARE APPROXIMATE.