

## Beautiful Double Brick Apartment Positioned for Comfort and Convenience



2



1



1

**7/714 Princes Highway, Kogarah**

**Sold for \$691,000 (Jun 12, 2024)**

Positioned at the rear of the building with convenient access via Green Street, this well appointed double brick apartment has been beautifully modernised to provide a low maintenance lifestyle or a reliable investment with excellent rental income prospects. Immaculate interiors are very practical and receive plenty of natural light, opening to separate balconies located on the northern and eastern sides of the building. Occupants will cherish the apartment's comfortable living and sleeping zones, well equipped electric kitchen plus rear lane and internal access to a lock-up garage. An unmissable opportunity in a prime walk-to-everywhere pocket, this ready-to-enjoy property offers easy access to local schools, city transport, Rockdale Plaza and Kogarah's shops, cafés and restaurants, while only moments from Brighton-Le-Sands Beach.

- Welcoming lounge and dining zones connects with north facing balcony
- Bright and spacious interiors present tiled flooring beneath high ceilings
- Renovated stone kitchen featuring premium appliances and ample storage
- Two private bedrooms, mirrored robes, main opening onto rear balcony
- Easy-to-maintain family bathroom offering separate shower and bathtub

**Property ID:** L28070400

**Property Type:** Apartment

**Building / Floor Area:** 109

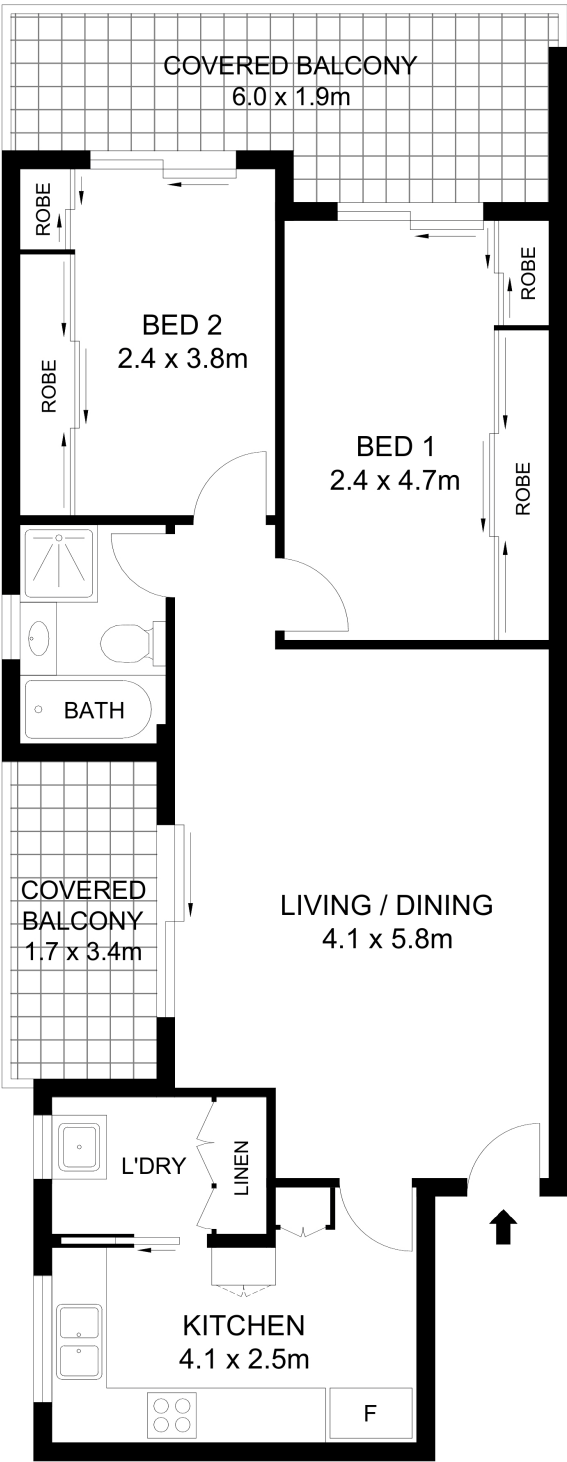
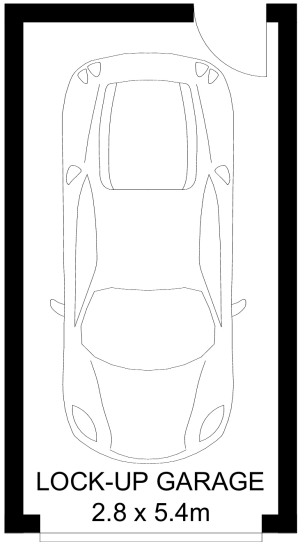
**Garages:** 1

**Sam Epsimos**

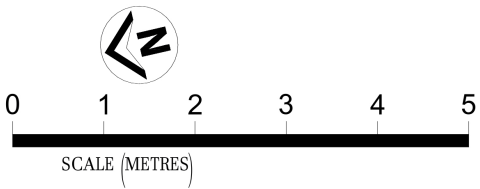
0402 373 274

sam.epsimos@bexley.rh.com.au

- Renovated internal laundry, additional storage, phone intercom, carpeted bedrooms
- Secure lock-up garage provides direct door access into apartment's foyer
- Walk to Rockdale Sports Centre, St George Hospital and bus services
- Ultra-convenient access for commuters to enter upcoming M6 Motorway



Level Two



WE BELIEVE THE INFORMATION IN THIS DOCUMENT TO BE  
RELIABLE. HOWEVER INTERESTED PERSONS SHOULD MAKE  
THEIR OWN ENQUIRIES. DIMENSIONS ARE APPROXIMATE.