



SLICK & STYLISH TWO BEDROOM APARTMENT WITH CARSPACE



2



1



1

4/270-272 King Georges Road, Roselands

\$625 per week

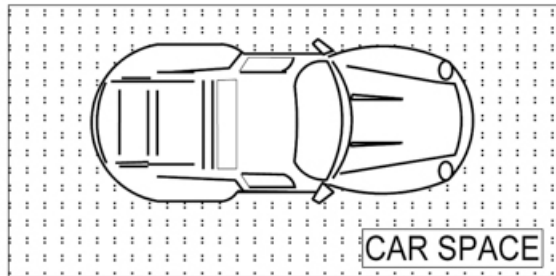
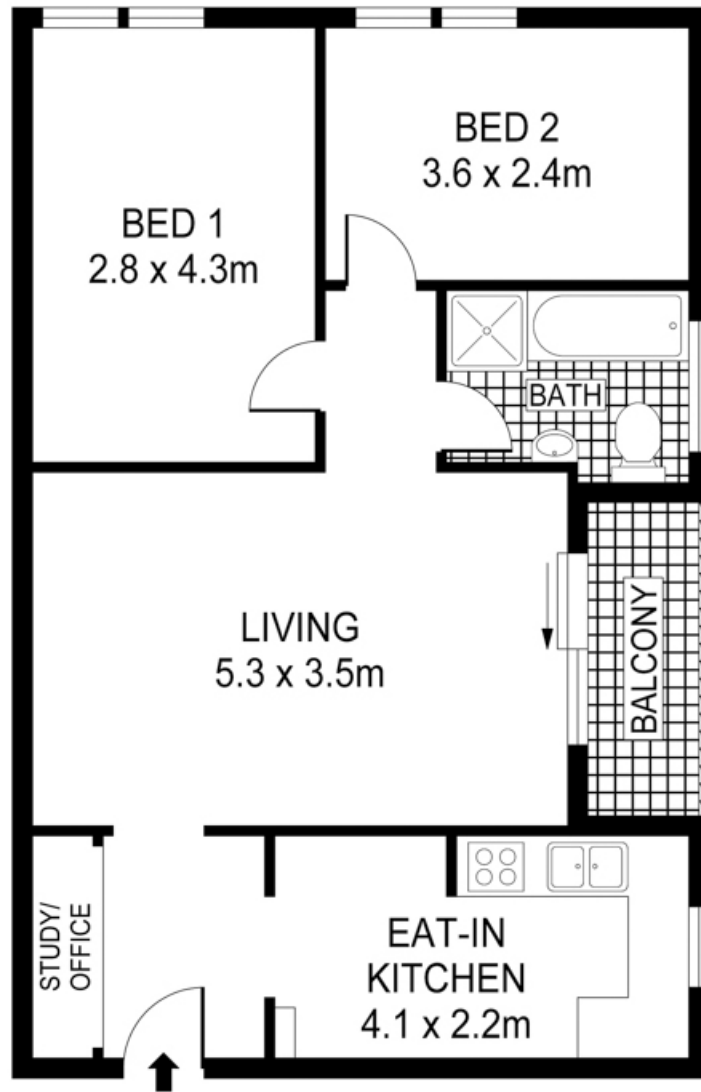
This modern two bedroom apartment has been transformed throughout and boasts the following enviable features:

- Spacious apartment with plenty of natural light throughout
- Modern eat-in kitchen with dishwasher
- Polished timber flooring, ceiling fans, plus study/office nook
- Two good-sized bedrooms, main with built in wardrobes
- Stylish modern bathroom with separate shower and bath
- Located next to a peaceful park, perfect for a morning stroll
- Undercover off-street parking space and separate laundry

Located in the heart of buzzing Roselands, it is close to parks, schools and transport, and only a short walk to Roselands Shopping Centre.

Property ID:	R25532
Property Type:	Unit
Garages:	1
Land Area:	99.0 sqm

Gina Mamuzic
02 9597 1690
gina@bexley.rh.com.au



PLANS SHOWN ONLY INDICATIVE OF LAYOUT. DIMENSIONS ARE APPROXIMATE.
Ref. No: 54522

Raine & Horne
Bexley

4/270 KING GEORGE'S ROAD

ROSELANDS