



ONE BEDROOM APARTMENT



1



1



1

102/1-3 Harrow Road, Bexley

\$650 per week

Located in the prestigious "BAYVIEW 360" building, this extra large one bedroom apartment boasts the following features:

- Sunny north east aspect
- Large master bedroom with built in wardrobe
- Spacious lounge & dining flowing onto North East terrace balcony
- Well appointed kitchen with gas cooking & dishwasher
- Ultra modern bathroom & internal laundry
- Ducted air conditioning throughout
- Ample cupboard storage throughout
- Video intercom entry & lift in building
- Secure carspace parking
- Envious rooftop appointed with bbq area and with 360 city, airport & water views

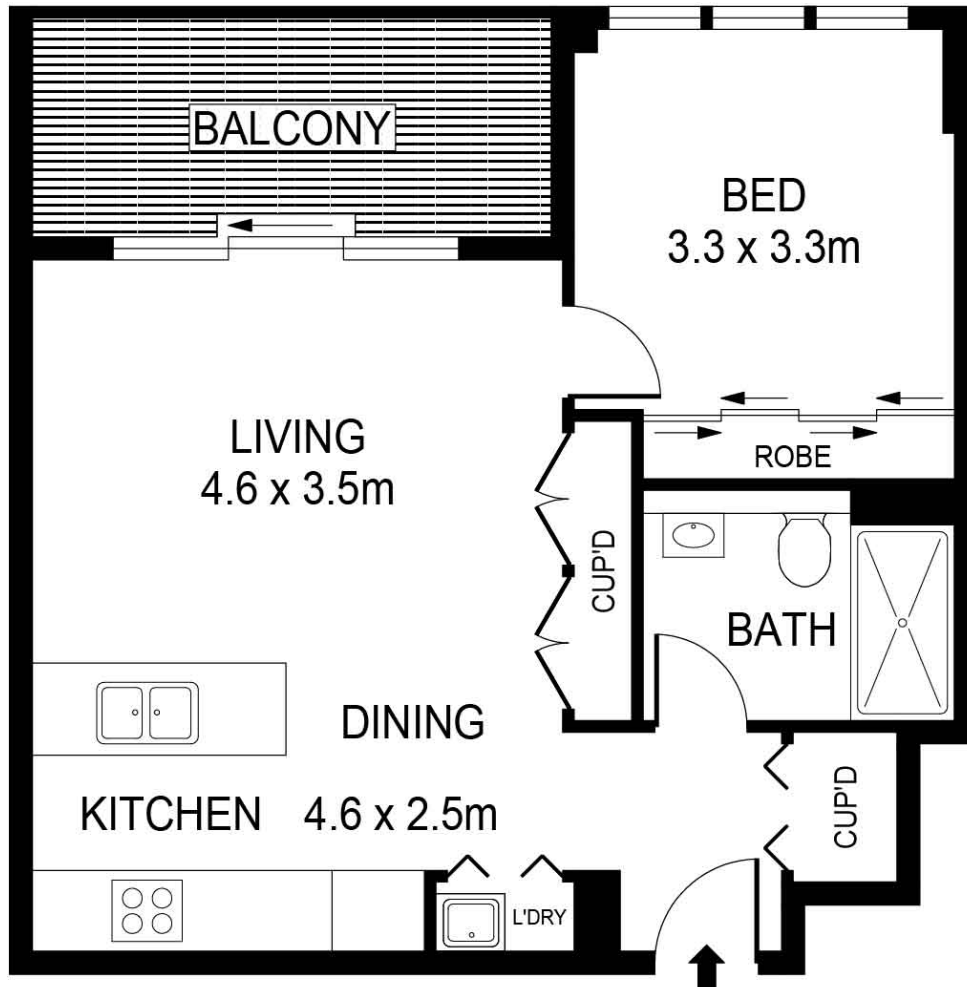
Moments to Bexley shopping village & public transport, be sure to arrange an inspection!

Property ID: R350817
Property Type: Apartment
Garages: 1

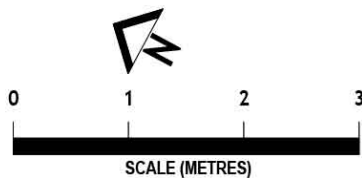
Gina Mamuzic
 02 9597 1690
gina@bexley.rh.com.au

INTERNAL AREA : 61m² APPROX.

Raine & Horne.
Bexley/Beverly Hills



LEVEL 1, 2, 3
102 / 202 / 302



NOTE : ONE CAR SPACE

WE BELIEVE THE INFORMATION IN THIS DOCUMENT TO BE
RELIABLE. HOWEVER INTERESTED PERSONS SHOULD MAKE
THEIR OWN ENQUIRIES. DIMENSIONS ARE APPROXIMATE.