

Magnificent Opportunity in Morphett Vale!



4



2



3

15 Riesling Street, Morphett Vale

Sold

Substantial and high-quality, this modern designer Torrens two-story residence features an architectural facade in a boutique development with wide street frontages. The impressive yet functional floor plan highlights generous proportions, space, and natural light. Built in 2022, this stunning 4-bedroom, 2-bathroom house is the perfect place to call home. With two spacious living areas and two modern kitchens perfect for entertaining, this low-maintenance property has everything you need.

The home boasts four spacious bedrooms and two kitchens, all bathed in natural light. The well-designed kitchen is a chef's dream, offering ample storage and a stainless steel gas cooktop and oven, perfect for your culinary adventures. The adjoining dining area ensures seamless entertaining and enjoyable family meals.

FEATURES AND ATTRIBUTES :

- Large lounge area downstairs;
- Downlights and Ducted reverse cycle aircon throughout;
- Wooden Floating boards throughout the property;

Property ID: L27934688

Property Type: House

Garages: 1

Open Parking: 2

Land Area: 250.0 sqm

Varun Patel

0426 153 571

varun.patel@blackwood.rh.com.au

- A slick modern kitchen with stainless steel 5 burner cooktop and oven ;
- Ample space in the kitchen with pantry area;
- Two size bedrooms downstairs with built-in robes and access to rear yard;
- Bathroom downstairs with shower and toilet;
- Large family area upstairs with balcony and kitchen;
- Two-way bathroom upstairs gives ensuite option for one bedroom;
- Master Bedroom with walk-in robes and access to the bathroom;
- Good size bedroom 4 with built-in robes;
- Study space upstairs;
- Located next to the famous Antonio Catholic school (Sharing the fence);
- Three shopping complex just within 2 minutes drive away;
- A famous one of the largest cycling tracks covering the major area of the suburb;
- A famous woodcraft college is located within walking distance or 1-minute drive away;

This home is Conveniently located just a minute's drive to South Gate Shopping Plaza, Woodcroft Shopping Centre, restaurants and cafes, recreational and sporting facilities, public transportation – everything you could possibly need is right on your doorstep!

Specifications Title: Torrens Title

Certificate of Title: Volume 6242 Folio 761

Land size: 250m2 (approx)

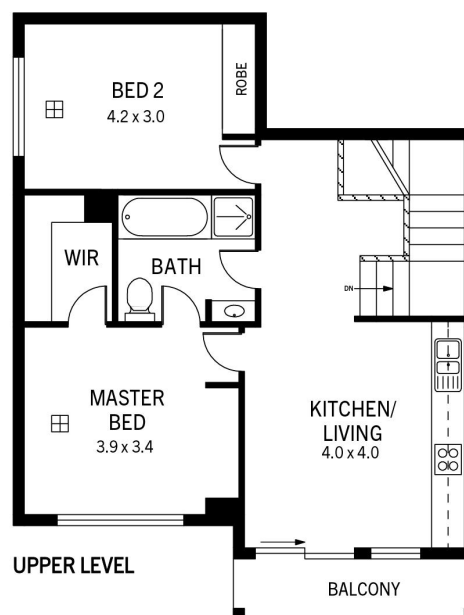
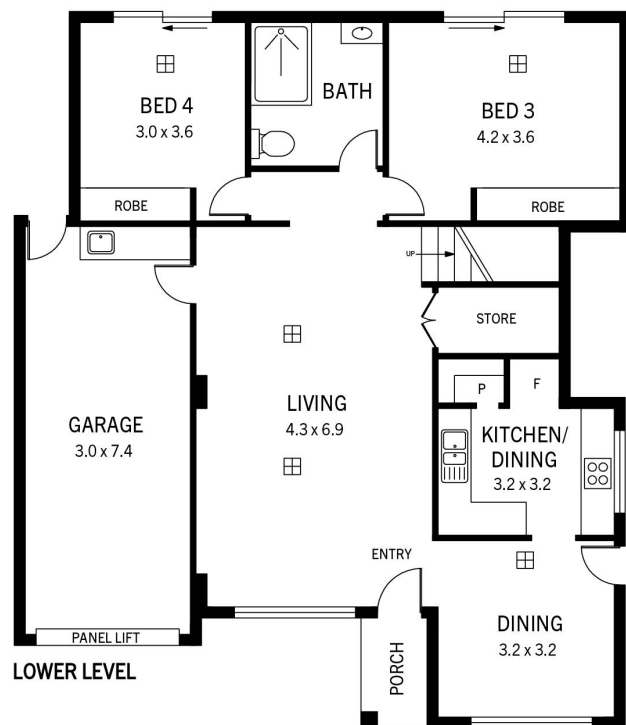
Year built: 2022

Council: City of Onkaparinga

Council rates: TBA

ESL: TBA

Disclaimer; All information provided has been obtained by Raine & Horne Blackwood from sources we believe to be accurate. However, we cannot guarantee the information is accurate and we accept no liability for any errors or omissions (including but not limited to a property's land size, floor plans, size, building age, and condition). Interested parties should make their own inquiries and obtain their own legal advice. RLA 44686



15 Riesling Street, Morphett Vale

DISCLAIMER: Floorplan and area calculation are approximate and for illustration purposes only.

Produced by **Property Portraits**

Interior
Garage
Exterior

162m²
23m²
10m²

195m²
TOTAL