



Victorian Mansion with Development Potential - 2 street frontages



400sq
m



50 Wentworth Road, Burwood

For sale by negotiation

A grand 2-storey charmer with upside development potential, the accommodation offers up to 7 bedrooms and huge formal and informal living areas. Includes multiple off-street parking & garages.

Centrally located within easy walking distance to Strathfield & Burwood shopping hubs, private schools & parklands, etc.

- Zoned RI General Residential
- 812 M2
- Floor Space Ratio 1.2:1
- Height Limit 11 Metres
- Rear street access from Mt Pleasant Avenue

Potential uses subject to council approval: Bed and Breakfast, boarding houses, dwelling houses, shop top housing etc.

Property ID:	L18991586
Property Type:	Land/Development
Building / Floor Area:	400
Land Area:	812.0 sqm

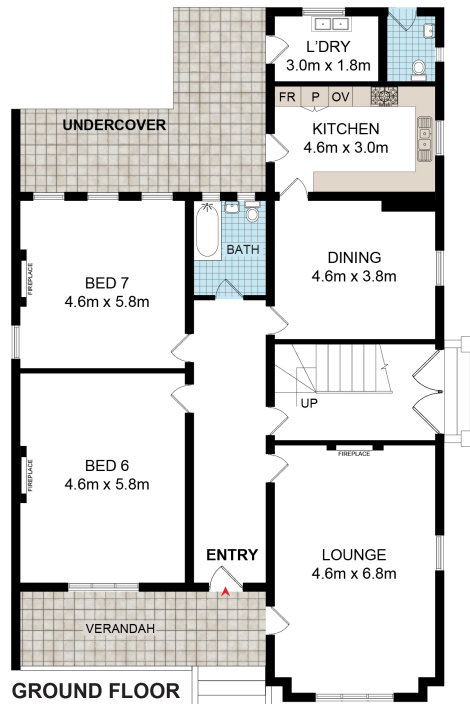
Guy Lorello
0425 111 111
Guy.Lorello@burwood.rh.com.au

Disclaimer: The above information has been furnished from sources we deem to believe. We have not verified whether or not that information is accurate, and do not have any responsibility to any person for its accuracy and do no more than pass it on.

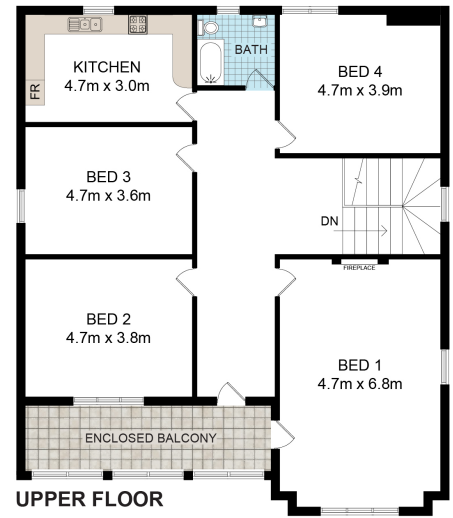
All interest parties should make and reply to their own inquiries in order to determine whether or not this information is, in fact, accurate.



SITE PLAN (not to scale)



GROUND FLOOR



UPPER FLOOR



BURWOOD

50 Wentworth Road,

DISCLAIMER: Plans shown are for presentation purposes only and are not part of any legal document or title. They are subject to errors, omissions, inaccuracies and should not be used as a sole and accurate reference. Interested parties should make their own inquiries using independent sources.

Raine & Horne