



An entire block of units with development potential (STCA)



4



2



2

87 Liverpool Road, Burwood

Sold for \$2,288,800 (Apr 03, 2024)

A solid double brick Art Deco building comprises two very spacious (248sqm of internal area), well-maintained two-bedroom units over two levels, offering sun-drenched living areas with charming original character features throughout.

Sitting on 385sqm of land (approx) with valuable E1 zoning, it allows for various options and potential for further development on the site (STCA)

Location Features:

50m to buses

850m to Burwood's main eateries and shopping strips

900m to Enfield Aquatic Centre

1Km to Fenced off leash dog Park and Henley Park

1.2km to Burwood Chinatown

1.3km to Burwood Train Station

Property ID: L25553330

Property Type: House

Open Parking: 2

Land Area: 385.0 sqm

Bryan Yu

+61415380422

bryan.yu@burwood.rh.com.au

1.6km to Westfield Shopping Centre

1.6km to Croydon Station

Torrens Titled – No Strata

Zoning: E1 Local Centre

FSR: 1.5:1

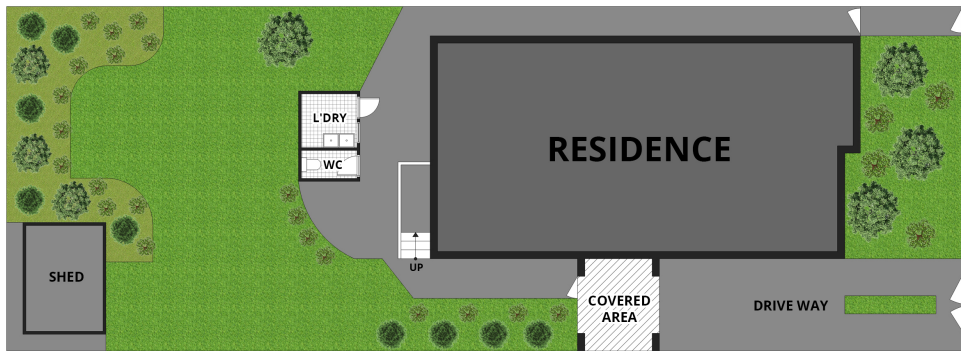
Maximum Building Height: 11m

Disclaimer: The above information has been furnished from sources we deem to believe. We have not verified whether or not that information is accurate, and do not have any responsibility to any person for its accuracy and do no more than pass it on.

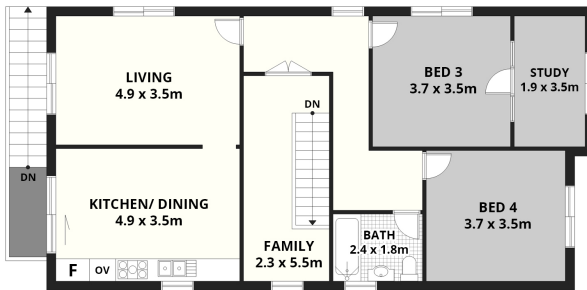
All interest parties should make and rely upon their own inquiries in order to determine whether or not this information is, in fact, accurate.

87 Liverpool Road, Burwood, NSW 2134

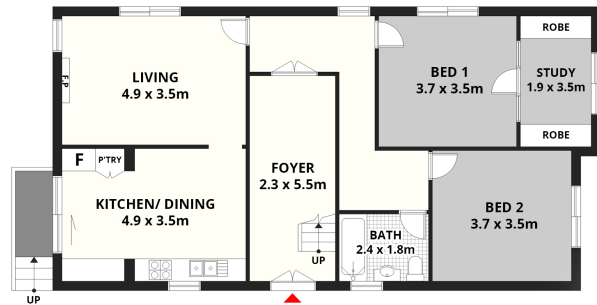
GROUND FLOOR: 124m² (Approx.)
LEVEL 1 FLOOR: 124m² (Approx.)
TOTAL INTERNAL: 248m² (Approx.)
LAND SIZE: 412m² (Approx.)



SITE PLAN



LEVEL 1 FLOOR



GROUND FLOOR



Scale in metres, Dimensions are approximate. All information contained herein is gathered from sources we believe to be reliable, however we cannot guarantee its accuracy and interested persons should rely on their own enquiries.

Raine & Horne
Burwood