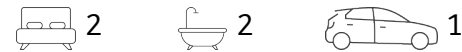




**Spacious Sun-drenched North Facing 2bed apartment**



**72/28A-32 Belmore Street, Burwood**

**Sold for \$768,000 (Sep 06, 2024)**

Conveniently located in the centre of Burwood, this two-bedroom apartment boasts a spacious sun-drenched open-plan living and dining area, along with a good-sized balcony offering district views.

**Features:**

- Spacious open-plan living, dining with lots of natural light
- Modern gas kitchen with stone benchtops
- Two large bedrooms; Master bedroom with ensuite and built-in robes
- Internal laundry with dryer
- Security parking for one car
- Security Intercom system with secure building access
- Central Burwood location, right in front of Emerald Square Shopping centre, just minutes walk to Burwood Westfield Shopping Centre, Burwood Chinatown, train station, buses and an

<b>Property ID:</b>	L27879839
<b>Property Type:</b>	Apartment
<b>Building / Floor Area:</b>	94
<b>Garages:</b>	1

**Bryan Yu**  
+61415380422  
bryan.yu@burwood.rh.com.au

array of restaurants, cafes and local shops.

Location Features: (approx.)

- 20m to Emerald Square Shopping Centre
- 100m to Burwood Plaza and an array of restaurants, cafes, and local shops
- 150m to buses
- 190m to Burwood Chinatown
- 240m to Burwood Station
- 600m to Burwood Westfield Shopping Centre
- 650m to Burwood Park

Total size: 94sqm with 79sqm internal size (approx.)

Strata: \$1,820.00 approx per quarter

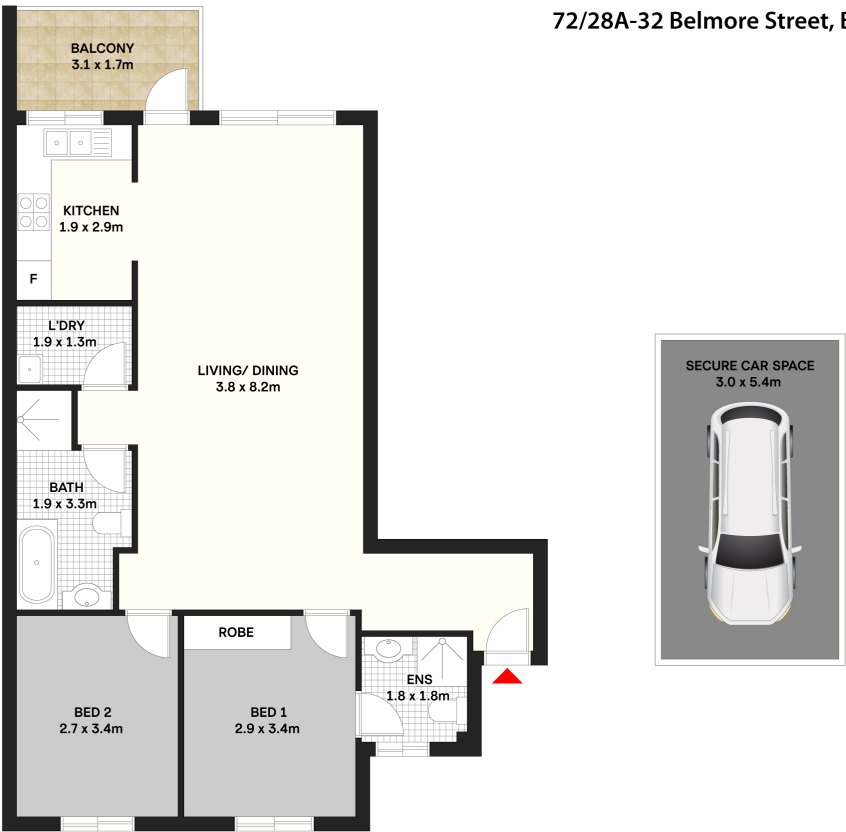
Will be sold, be in it to win it!

**The property is currently tenanted, and it may not be presented in its best condition; therefore, some of the images displayed are virtually staged to enhance your visualisation of the potential lifestyle achieved by the interior design of this property.**

\*The prospective purchasers have the option to buy it as a vacant possession or with the tenancy.

Disclaimer: The above information has been furnished from sources we deem to believe. We have not verified whether or not that information is accurate, and do not have any responsibility to any person for its accuracy and do no more than pass it on. All interest parties should make and rely upon their own inquiries in order to determine whether or not this information is, in fact, accurate.

72/28A-32 Belmore Street, Burwood, NSW 2134



Scale in metres. Dimensions are approximate. All information contained herein is gathered from sources we believe to be reliable, however we cannot guarantee its accuracy and interested persons should rely on their own enquiries.

**Raine & Horne**  
Burwood