



## SPACIOUS 4 BEDROOM DUPLEX IN AN AFFORDABLE PRICE RANGE



4



2



1

## 328a Concord Road, Concord West

### Sold

Impressive in proportion and modern throughout, boasting an abundance of natural light and sleek finishes, ideal for the growing family or astute investor. Offering an entertainer's private rear yard with covered patio and established gardens. Located within walking distance to buses, Concord West train station, shops, schools and parks. Opportunity knocks.

- 4 large bedrooms, with built-ins and ensuite off the main
- Modern poly/stone gas kitchen with stainless steel appliances
- Generous living area, opening to private rear yard.
- 2 modern bathrooms plus downstairs powder room, internal laundry
- Lock up garage with internal access plus high ceiling & storage room.
- Ducted air conditioning throughout. Double glazing to front windows & doors.

Paul Pettenon 0411 180 290

Paul.pettenon@cs.rh.com.au

**Property ID:** L21698385

**Property Type:** DuplexSemi-detached

**Garages:** 1

**Land Area:** 278.0 sqm

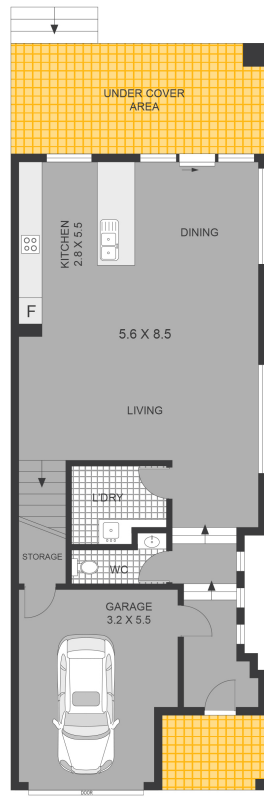
**Paul Pettenon**

0411 180 290

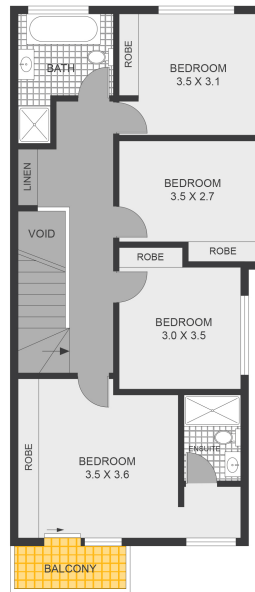
paul.pettenon@cs.rh.com.au

Paul Milkovic 0402 420 666

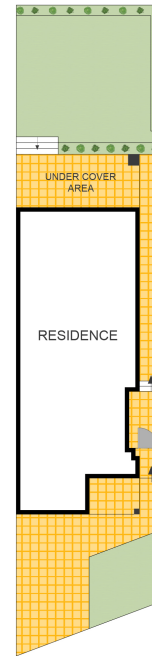
Paul.milkovic@cs.rh.com.au



GROUND FLOOR



FIRST FLOOR



SITE PLAN



**CONCORD WEST**  
328a Concord Road

DISCLAIMER: Plans shown are for presentation purposes only and are not part of any legal document or title. They are subject to errors, omissions, inaccuracies and should not be used as a sole and accurate reference. Interested parties should make their own inquiries using independent sources.

**Raine & Horne®**