

Charming One-Bedroom Unit in Prime Strathfield Location



1



1



1

7/28 Beresford Road, Strathfield

Sold for \$601,000 (Jun 20, 2024)

Discover a delightful one-bedroom, one-bathroom unit with a secure lock-up garage, nestled in one of the best locations in Strathfield. This spacious unit boasts a superb layout, bathed in natural sunlight throughout the day, and is maintained in stunning condition.

Key Features:

- Prime Location: Just a 8 Minute walk to Strathfield station
- Convenience: Close to Strathfield centre, vibrant restaurants, shops and Homebush station.
- Investment Potential: An ideal investment opportunity offering strong rental income and potential for capital growth.

Generous Size:

Unit: 64.2 sqm

Garage: 16.7 sqm

Property ID: L27259768

Property Type: Apartment

Building / Floor Area: 80

Garages: 1

Luka Hrzina

0424 567 702

luka.hrzina@cs.rh.com.au

Total: 80.9 sqm

Don't miss out on this exceptional opportunity to own a fantastic unit in Strathfield. Whether you're an investor seeking strong returns or a homebuyer looking for the perfect place to call home, this property ticks all the boxes.

Luka Hrzina

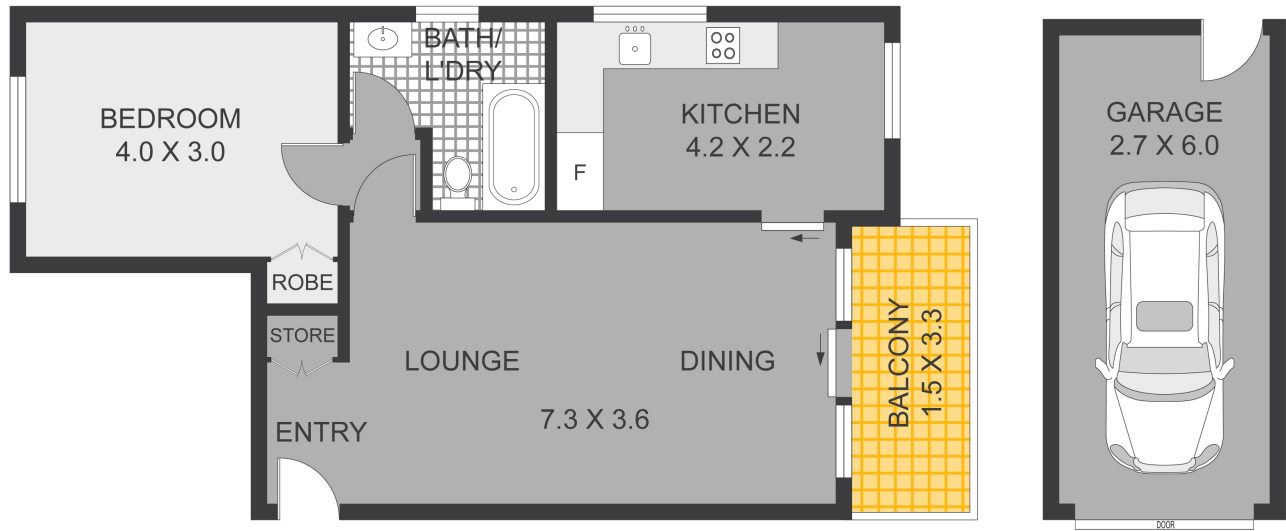
0424 567 702

luka.hrzina@cs.rh.com.au

Paul Pettenon

0411 180 290

paul.pettenon@cs.rh.com.au



STRATHFIELD
7/28 BERESFORD ROAD

DISCLAIMER: Plans shown are for presentation purposes only and are not part of any legal document or title. They are subject to errors, omissions, inaccuracies and should not be used as a sole and accurate reference. Interested parties should make their own inquiries using independent sources.

Raine & Horne®
Concord | Strathfield