

Stylish North-Facing Urban Retreat



106/43-45 Loftus Crescent, Homebush

Sold for \$668,000 (Aug 13, 2024)

Nestled in a modern boutique block, this north-facing apartment epitomizes contemporary living with sophistication. Boasting seamless indoor-outdoor flow and panoramic urban views through floor-to-ceiling glass, it offers a spacious living/dining area, balcony, and two bedrooms.

Located steps from vibrant amenities and 600m from Homebush Station, this home balances suburban tranquility with urban convenience. Discover an exclusive lifestyle at Loftus Crescent in Homebush, where luxury meets comfort in Sydney's Inner West.

- Seamless transition between balcony and lounge, perfect for indoor/outdoor living
- Two spacious bedrooms, each with built-in wardrobes; master bedroom features an ensuite
- Stylish and modern luxury bathrooms
- Expansive and light-filled living area opening to a sizable north-facing balcony, ideal for entertaining
- Kitchen equipped with gas cooking, stone benchtops, and high-end Smeg stainless steel appliances

Property ID:	L27336064
Property Type:	Apartment
Building / Floor Area:	98
Garages:	1

Paul Pettenon
0411 180 290
paul.pettenon@cs.rh.com.au

- Convenient internal laundry
- Located in a boutique security block with ducted air-conditioning
- Includes secure parking spaces and a storage cage
- Ideal as a ready-made first home or investment opportunity in a high-demand area experiencing growth
- Walking distance to rapid city transport, the renowned Bakehouse Quarter, and charming coffee houses

Strata Rates: \$935.25 (approx.) per quarter

Total Size: 98sqm

Internal: 83sqm

Storage Cage: 1sqm

Car Space: 14sqm

Contact:

Paul Pettenon

0411 180 290

Paul.pettenon@cs.rh.com.au

Daniel Maiese

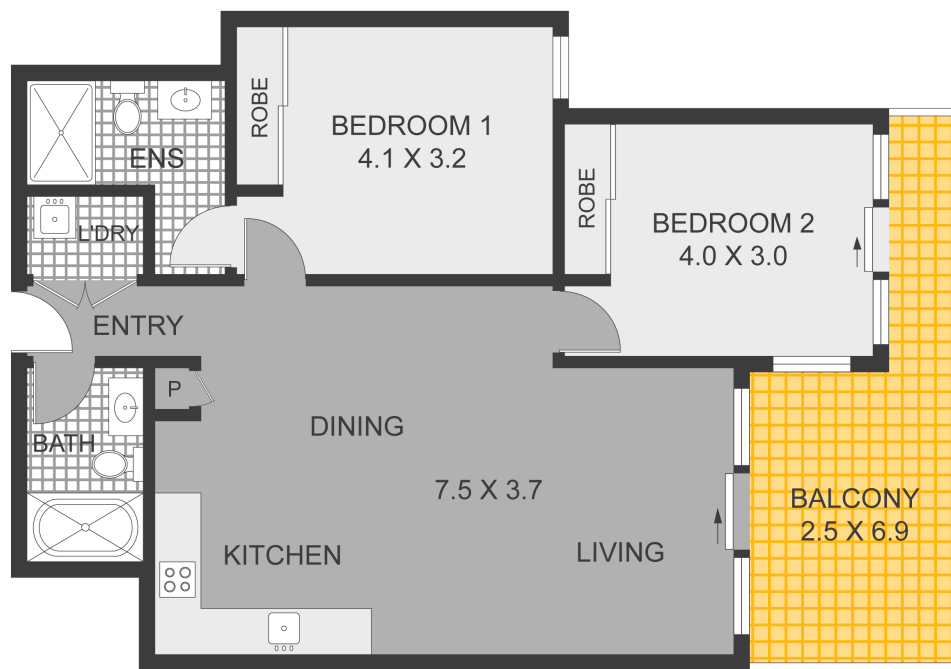
0419 256 571

daniel.maiese@cs.rh.com.au

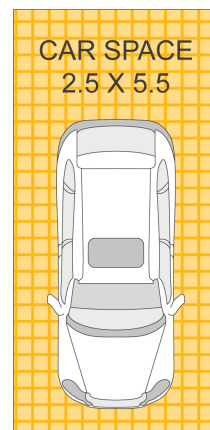
Ross Musso

0413 093 139

ross.musso@cs.rh.com.au



LEVEL ONE



HOMEBUSH

106/43-45 LOFTUS CRESCENT

DISCLAIMER: Plans shown are for presentation purposes only and are not part of any legal document or title. They are subject to errors, omissions, inaccuracies and should not be used as a sole and accurate reference. Interested parties should make their own inquiries using independent sources.

Raine & Horne
Concord | Strathfield