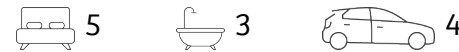




Expansive 714.50 sqm North-Facing Property in Prestigious Concord East



31 Zoeller Street, Concord

Sold for \$3,695,888 (Sep 14, 2024)

Nestled in the highly sought-after East side of Concord, this exceptional property sits on 714.5 sqm of land, offering a spacious north-facing backyard perfect for family activities and entertaining. This 5-bedroom, 3-bathroom home boasts an open-plan kitchen and dining area, along with a versatile floor plan that includes ample formal and informal living spaces, making it an ideal home for a growing family seeking space, comfort, and convenience.

The large alfresco area provides an excellent space for outdoor gatherings, while the proximity to foreshore walks, golf courses, and parks enhances the recreational opportunities for residents. Situated near the vibrant Majors Bay village, you'll have easy access to a variety of shops, cafes, and local amenities, ensuring all your needs are met within a short distance.

With the potential to move straight in, update, or even build your dream home or duplex (STCA), this property offers endless possibilities. Its convenient location to numerous parks and local shops further adds to the appeal, making it an ideal choice for those looking to settle in a prime location.

Key Features:

- 714.5 sqm of land with a spacious north-facing yard

Property ID:	L28101867
Property Type:	House
Building / Floor Area:	314
Garages:	4
Land Area:	714.5 sqm

Paul Pettenon
0411 180 290
paul.pettenon@cs.rh.com.au

- Move-in ready, potential to update, or build your dream home/duplex (STCA)
- Situated in the desirable east side of Concord
- Five spacious bedrooms and three modern bathrooms
- Open-plan kitchen and dining area, ideal for family gatherings
- Versatile floor plan with ample formal and informal living areas
- Large alfresco area, perfect for entertaining
- Four-car accommodation
- Close to foreshore walks, golf courses, parks, and Majors Bay village
- Proximity to the vibrant Majors Bay village with shops, cafes, and amenities

This home is perfectly designed for a large, growing family, providing ample room and versatile living areas that cater to both relaxation and entertainment. Don't miss out on this incredible opportunity to secure a spacious and versatile family home in one of Concord's most desirable locations.

Paul Pettenon

0411 180 290

Paul.pettenon@cs.rh.com.au

Daniel Maiese

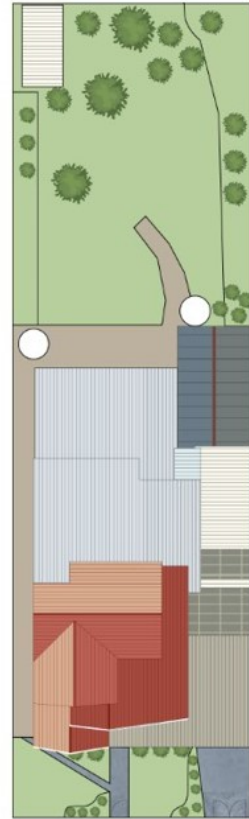
0419 256 571

Daniel.maiese@cs.rh.com.au

Ross Musso

0413 093 139

Ross.musso@cs.rh.com.au



Concord
31 Zoeller Street

DISCLAIMER:

This floor plan is used for marketing purposes only and is subject to errors and inaccuracy. The marketing Agent & Maraj Media will not accept any liability. Interested parties should make and rely on their own enquires.

Raine&Horne.