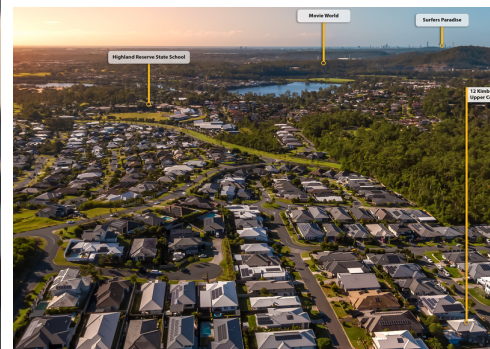




Unlock Your Dream Home Potential in Stone Creek!



4



3

12 Kimberley Creek Road, Upper Coomera

Sold for \$645,000 (Jul 01, 2024)

Discover your dream home in the serene and picturesque surroundings of Stone Creek. Nestled amidst rolling hills and lush greenery, Stone Creek offers a tranquil escape from the hustle and bustle of city life. Immerse yourself in nature's beauty as you explore winding trails and scenic vistas right at your doorstep.

Embrace the peaceful ambiance of Stone Creek, where the whispering winds and rustling leaves create a symphony of serenity. It's a place where you can reconnect with nature and find solace in the beauty of your surroundings. Stone Creek strikes the perfect balance between tranquility and convenience, providing easy access to essential amenities, schools, parks, and shopping centers. Enjoy the comfort and convenience of having everything you need just a short drive away.

Whether you're envisioning your forever home or considering an investment opportunity, this property offers immense potential. With a blank canvas waiting to be transformed, you have the chance to create a valuable asset that will endure the test of time.

With the basics already in place, the canvas is yours to paint. Select finishes, and personalize every detail to match your unique preferences and lifestyle. Let your imagination soar as you bring your vision to life.

Property ID: L25024645

Property Type: House

Nathan Deegenars

0415 382 422

nathan.deegenars@coomera.rh.com.au

Seize the opportunity to shape your future in the enchanting setting of Stone Creek. While this property presents an exciting possibility, we encourage you to seek professional advice to determine the best course of action for realizing your dreams. Contact us today to explore this extraordinary opportunity further and begin planning your next steps. Your dream home awaits!

Property Features:

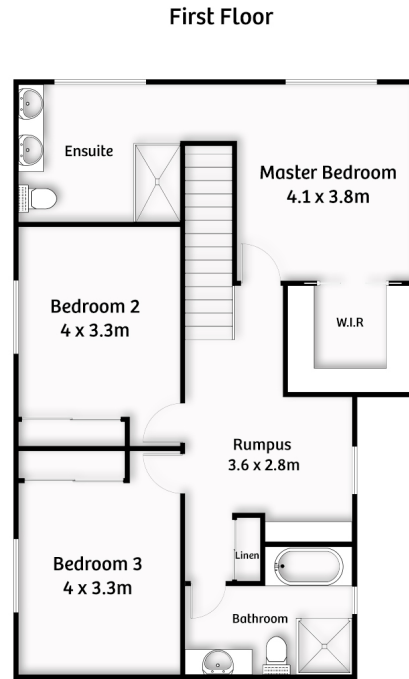
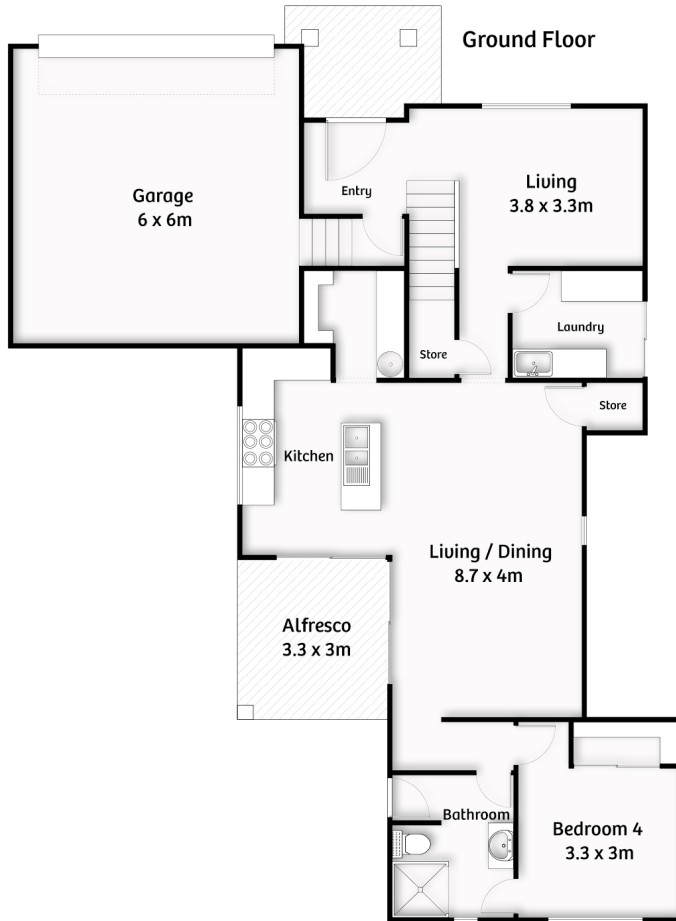
- 639m2 Elevated Block
- NBN Technology – Fibre to the Premises (FTTP)*
- Backyard Facing North
- No Easements on Land

Disclaimer: All the information provided to you in our marketing material, has been sourced from third parties, and effort has been made to ensure the accuracy and thoroughness, please note we cannot guarantee the accuracy of the information provided by our Vendors, and as such, Raine and Horne Coomera

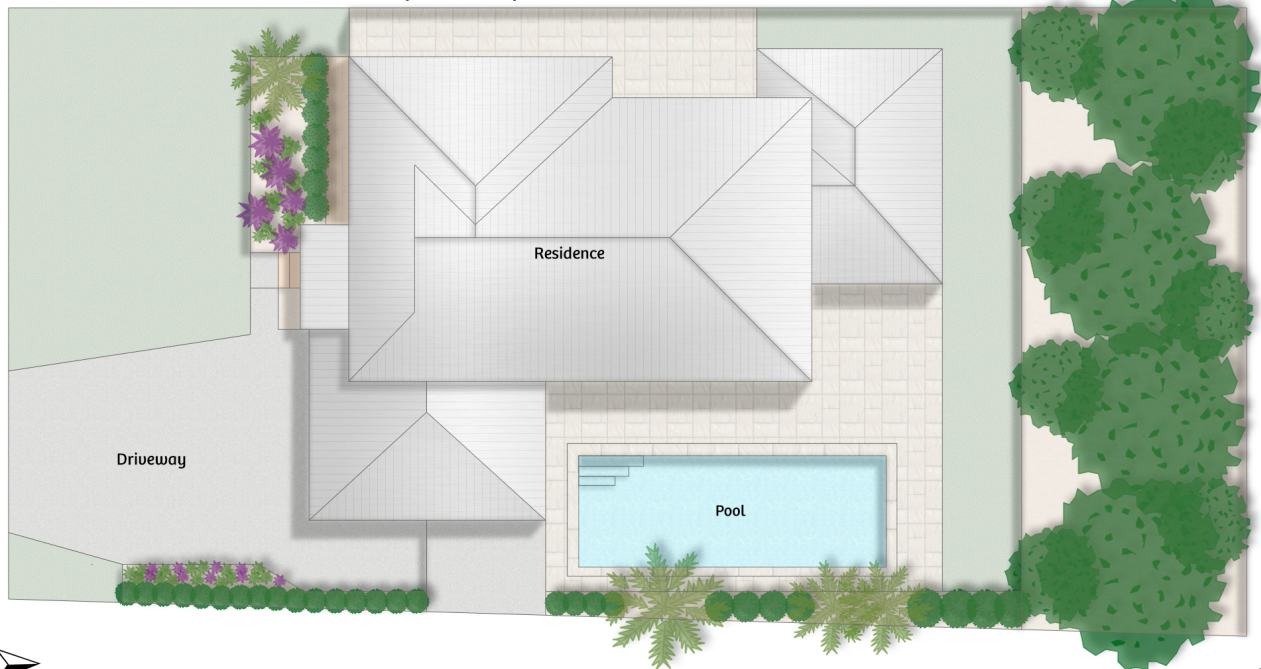
Pimpama makes no statement, representation or warranty, and assumes no legal liability in relation to the accuracy of the information provided. Interested parties should conduct their own due diligence in relation to each property they are considering purchasing. All photographs, maps, and images are representative only, for marketing purposes.

Auction disclaimer.

Important Note: This property is being presented for sale via auction or without a predetermined price, making it unfeasible to provide a pricing reference. It's possible that the website has categorized the property into a price range for the sake of its online functionality.



Proposed Site plan of finished build



Total floor area approx : 263m²