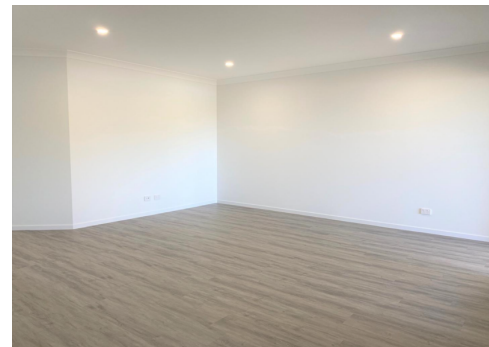




Modern Day Family Home in Bahrs Scrub



4



2



2

33 Lacewing Crescent, Bahrs Scrub

\$780 per week

You can find our applications on our website. Under the property there is an 'Apply Now' button. You are more than welcome to submit an application subject to viewing. Keep an eye on our Raine & Horne Coomera

Pimpama website where all inspections, if available will be shown, to avoid missing out!

We are excited to present this exceptional property boasting a range of. The master bedroom becomes a serene retreat with its spacious walk-in wardrobe and ensuite, providing a private sanctuary. Three additional bedrooms, each equipped with built-in wardrobes and ceiling fans, ensure comfort for the entire family. The modern kitchen is a culinary haven, featuring a 900mm stainless steel cooktop and oven, while the tiled living and dining areas create a seamless flow throughout the home. With a dedicated carpeted lounge/media room and a convenient study nook, this residence offers versatility to suit various lifestyles. The split system air conditioning in the master bedroom and dining area ensures year-round comfort. Step outside to a fully fenced yard with a covered alfresco, providing an ideal space for outdoor enjoyment. Completing the package is a double lock-up garage, adding both convenience and security to this inviting property.

Outstanding Features:

Property ID: R3365061

Property Type: House

Garages: 2

R&H Coomera PM Team

0438 115 066

rentals@nerang.rh.com.au

- Master bedroom w/ walk-in wardrobe & ensuite
- 3 additional bedrooms w/ built-in wardrobes
- Ceiling fans in each bedroom
- Split system air conditioning in master bedroom & dining area
- Modern kitchen with 900mm stainless steel cooktop & oven
- Tiled living & dining area
- Carpeted lounge/ media room
- Study nook
- Fully fence yard & covered alfresco
- Double lock up garage

Nestled in the picturesque surroundings of Logan City, Bahrs Scrub offers a peaceful retreat from the hustle and bustle of city life while providing convenient access to essential amenities. Boasting a harmonious blend of nature and community, residents enjoy the lush greenery, parks, and recreational spaces that define this charming suburb. With a range of housing options, from spacious family homes to contemporary apartments, Bahrs Scrub accommodates diverse lifestyles. Proximity to local schools, shopping centers, and dining establishments ensures that daily needs are easily met. Embrace the laid-back atmosphere and sense of community in Bahrs Scrub, making it an ideal choice for those seeking a serene suburban escape without compromising on modern conveniences.

Disclaimer: All the information provided to you in our marketing material, has been sourced from third parties, and efforts have been made to ensure the accuracy and thoroughness, please note we cannot guarantee the accuracy of the information provided by our Vendors, and as such, Raine and Horne Coomera

Pimpama makes no statement, representation or warranty, and assumes no legal liability in relation to the accuracy of the information provided. Interested parties should conduct their own due diligence in relation to each property they are considering renting. All photographs, maps, and images are representative only, for marketing purposes.