



Sunshine, Sweeping Views & Convenience



2



1

17/83 Old South Head Road, Bondi Junction

Sold

Freshly painted interiors, sunlit north-east aspect, sweeping 180-degree leafy district views to Cooper Park and a harbour cameo are winning features of this affordable two-bedroom one-bathroom apartment on Level 4 of a modernist c1960s building conveniently situated 250m level walk to Bondi Junction shopping and bus/train transport. Offering exceptionally good value for first home buyers and investors, the apartment is bright and airy with wall-to-wall windows framing views in the living area and main king-size bedroom, while the open-plan kitchen and bathrooms are updated for modern living. A tranquil retreat yet close to the action with minutes to iconic Bondi Beach, Centennial Park, Paddington's dining scene and the harbour.

Property Features:

- Living/dining with district views & harbour cameo
- Main king-size bedroom with b/ins, ensuite, views
- 2nd queen-size bedroom with leafy treetop vista
- Modern open-plan kitchen with white cabinetry

Property ID: L1013884

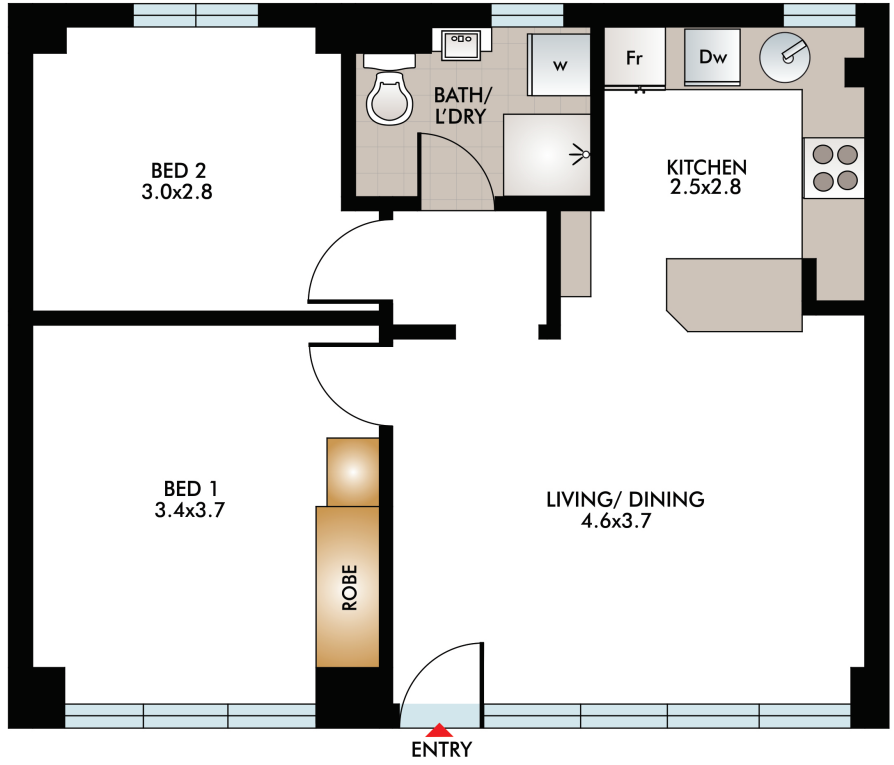
Property Type: Apartment

Hannan Bouskila

0413 381 564

Hannan.Bouskila@db.rh.com.au

- Electric cooktop, oven, stainless steel dishwasher
- 2 fully tiled bathrooms: main with laundry facilities
- Main bathroom with new vanity and towel rail
- Crisp white interiors, parquet floors, sunny NE aspect
- Level lift access, tranquil elevated setting on Level 4
- Boutique 6-level strata title c1960s modernist building
- Level walk to shopping, cinemas, dining, buses, trains
- Dual Street Access from Ben Eden Street



This diagram is for illustrative purpose only. All reasonable care has been taken in the preparation, but no warranty is given to the accuracy of the information. This document does not constitute any part of any offer or contract. Dimensions shown are approximate only. Prospective purchasers must rely on their own enquiries.

17/83 Old South Head Road, Bondi Junction