



## Brilliant Family Home with Superior Design Instincts



4



3



2

## 22 Plowman Street, North Bondi

Sold

Expertly crafted with mastery of space and light, this sensational home is composed as an uplifting haven for coastal family living with a selection of quality materials. It offers a fresh take on the classic beach house with a spacious living and dining area flowing seamlessly to the private garden oasis. Also on ground level is the premium kitchen, a bedroom suite, new guest powder room and laundry, while upstairs are three more oversized bedrooms, featuring two with ensuites. Private and spacious with a double carport, the house is perfectly positioned in a quiet street just moments from tantalising hospitality venues at seven ways and along Glenayr Avenue, while only 850 metres to Bondi Beach Public School and an easy stroll from the beach.

### Property Features:

- Leicht kitchen features stone island with breakfast bar
- Fully integrated appl. include fridge with automatic doors
- Banquette dining setting placed beside the private garden
- Bi-fold doors are at hand to offer seamless in/outdoor living

**Property ID:** L21878076

**Property Type:** House

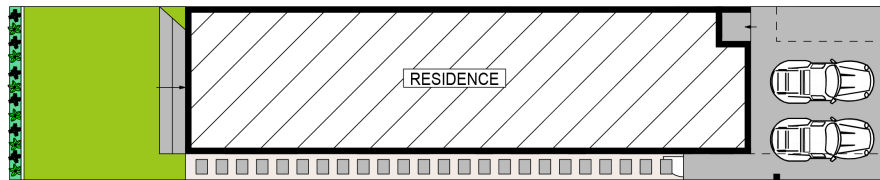
**Garages:** 2

### Mark Yeats

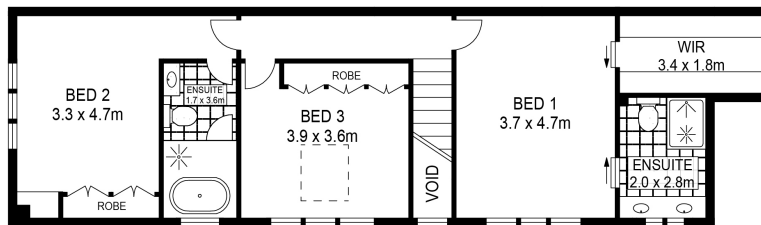
0417 477 420

Mark.Yeats@db.rh.com.au

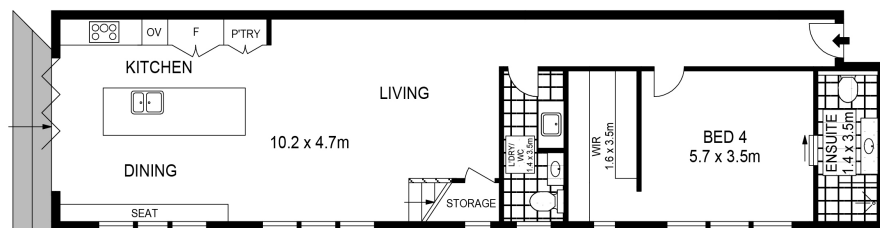
- Sunny & private easy care garden with Astroturf is pet-friendly
- Spacious bedrooms, two have barn doors over the ensuites
- Upper level with ceilings reaching soaring heights at 3.9m
- Timber herringbone floor downstairs, premium carpet upstairs
- Artisan tile selection adds a unique look to every bathroom
- Ducted-air conditioning, double carport in a quiet street
- Nearby cafes include Shuk, Blackwood & Lox in a Box
- Quick access to Bondi Golf Club, markets & coastal walk



**SITE PLAN**



**LEVEL ONE**



**ENTRY LEVEL**



Scale in metres. Indicative only. Dimensions are approximate. All information contained herein is gathered from sources we believe to be reliable. However we cannot guarantee it's accuracy and interested persons should rely on their own enquiries.



22 Plowman Street, North Bondi