



North-Facing Designer Apartment with Oversized Lock Up Garage



2



1



1

## 17/10 Henrietta Street, Waverley

Sold

Bathed in sunny north-facing living in the recently transformed landmark development, 'Ocean Park', this top floor deluxe coastal enclave offers prime coastal lifestyle and convenience in the heart of Waverley.

The stylish 87sqm approx. apartment features two large bedrooms with built-in robes, a deluxe stone bathroom with freestanding tub & separate shower, a separate second toilet/powder room and an internal laundry. An oversized remote lock up garage has plenty of storage with provisions for smart car charging.

Situated in a well-maintained security block with lift access and offering a sun-drenched saltwater pool and sculptured gardens, the apartment is just a stroll from Waverley Park, Bondi Road shops, Charing Cross Village and Bondi Junction. Bondi, Bronte, and Tamarama beaches are only a couple minutes away.

- Spacious living area with warm oak timber flooring
- Large north-facing entertaining balcony
- Handcrafted white timber grained kitchens with stone benchtops, Franke gas appliances

Property ID: L23304104

Property Type: Apartment

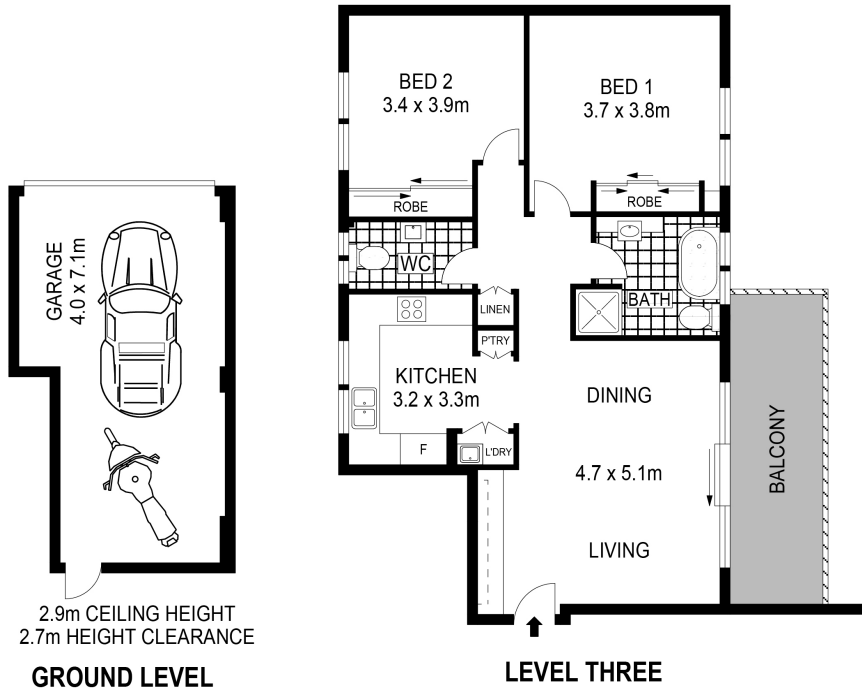
Garages: 1

**Paul Langsam**

0412 375 551

Paul.Langsam@db.rh.com.au

- Stunning bathrooms including free-standing bath, separate shower and terrazzo ceramic tiling, 2nd toilet/powder room
- Internal laundry, climate controlled air-conditioning
- Bespoke joinery including built-ins and internal storage cabinetry
- Oversized remote 25sqm approx. lock-up garage
- Security Intercom & lift access
- Sculptured gardens and sun-drenched saltwater pool
- A pet friendly community



Scale in metres. Indicative only. Dimensions are approximate. All information contained herein is gathered from sources we believe to be reliable. However we cannot guarantee it's accuracy and interested persons should rely on their own enquiries.



17/10 Henrietta Street, Waverley