

## House-Like Apartment With Stunning Harbour Views & Ultimate Privacy



3



2



2

**2/14 Eastbourne Road, Darling Point**

**Sold**

Capturing serene views over boat-studded Double Bay, this oversized apartment delivers an outstanding lifestyle sanctuary in Eastbourne Road's prestigious Grosvenor House. Freshly schemed interiors with polished timber flooring and house-like proportions make for easy living with a choice of a balcony and a large entertaining terrace with floor-to-ceiling glass allowing abundant natural light. It features separate living/dining areas plus a modern stone kitchen equipped with a breakfast bar and Bosch appliances. Accommodation comprises three bedrooms, the master with a walk-in robe and stylish ensuite opens to a private rear balcony amid beautifully manicured gardens, while there is a third bedroom or second living area/media room. Residents enjoy lift access to resort-style facilities including a heated indoor pool plus a tennis court as well as two secure basement side-by-side car spaces.

Features Include:

- Impressive proportions with separate living and dining areas
- Floor-to-ceiling glass frames serene views over Double Bay
- East facing sun washed balcony overlooks complex gardens
- Modern stone kitchen, Bosch appliances, large pantry

**Property ID:** L25568603

**Property Type:** Apartment

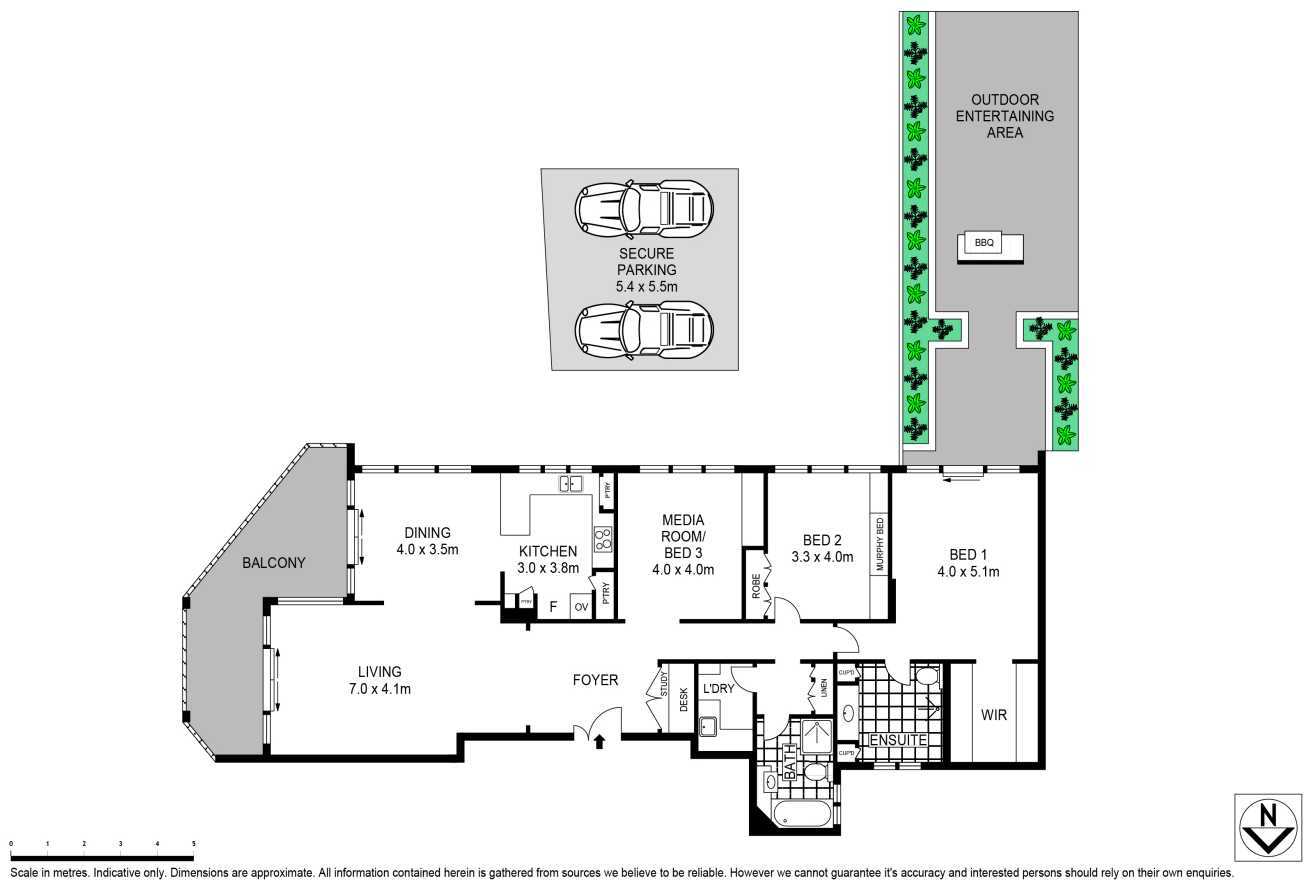
**Garages:** 2

**Alex Lyons**

0488 201 377

Alex.Lyons@db.rh.com.au

- Well-sized bedrooms appointed with built-in wardrobes
- Master features walk-in robe and stylish fully tiled ensuite
- Entertainment balcony, integrated BBQ, manicured gardens
- Ducted air conditioning, large internal laundry, vast storage
- Media room/third bedroom, video security intercom
- Resort-style facilities, heated indoor pool and tennis court
- Lift access to secure basement side-by-side double parking
- Stroll to Richies Café, harbourside parks and Double Bay
- Walk to ferries, Edgecliff Station, Eastpoint shopping, buses



2/14 Eastbourne Road, Darling Point