



Rare Corner-Block Family Home With Fabulous Potential



3



2



2

1 Ebsworth Road, Rose Bay

Sold

Coming to market for the first time in almost 60 years, this charming three-bedroom home sits on solid Federation-era sandstone foundations and enjoys an enviable corner position on a premium street in this lifestyle enclave. The versatile floorplan is complemented by bespoke mid-century features and contemporary updates that combine to create a warm, inviting family haven, complete with grassy garden areas and a large garage with entry from Fernleigh Street. Several top-tier public and independent schools lie within a 1.5km radius, while the popular Rose Bay village and sandy harbour beach are just 750 metres away. Ready to enjoy as is, the property also boasts excellent potential for an inspired renovation (STCA).

Property Features:

- Three bright, good-sized bedrooms with built-in wardrobes
- Versatile home office, playroom or potential fourth bedroom
- Modern skylit granite-topped gas kitchen with breakfast bar
- Bright dining area flows to generous mid-century living room
- Contemporary bathroom with rimless glass-framed shower

Property ID: L26735804

Property Type: House

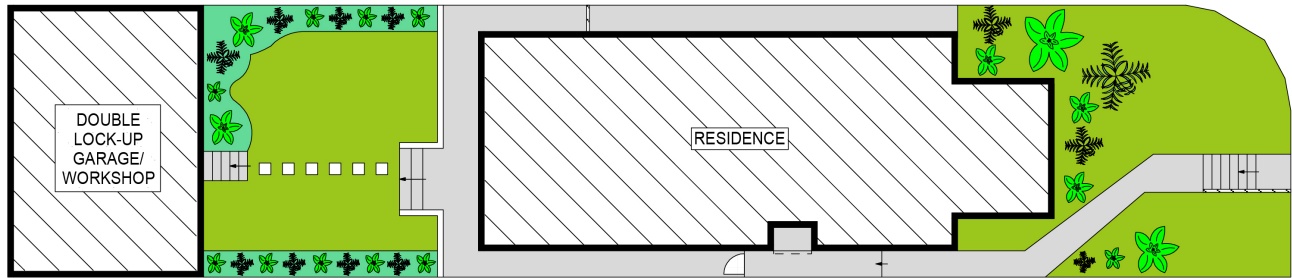
Garages: 2

Ric Serrao

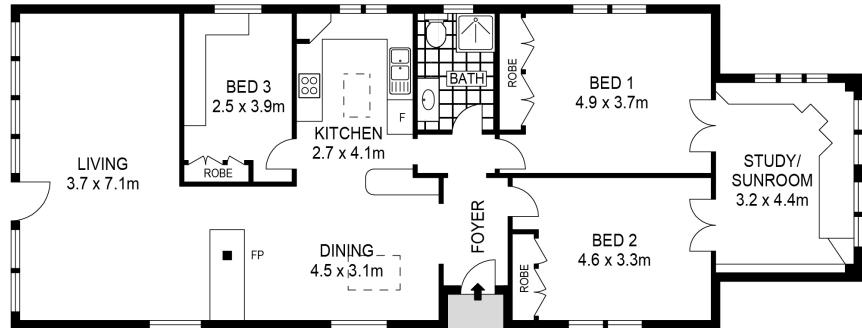
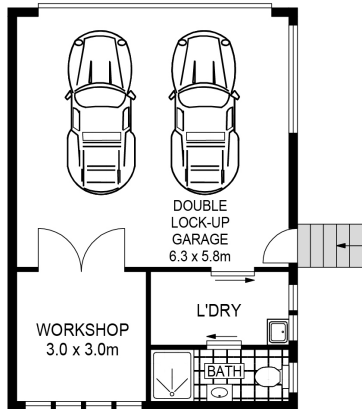
0412 072 178

Ric.Serrao@db.rh.com.au

- Full-width covered porch leading to lush, grassy backyard
- Double lock-up garage with good-sized separate laundry
- Solid construction with great potential to add a second level
- Just 80m to buses and 500m to Rose Bay North shopping



SITE PLAN
(NOT TO SCALE)



Scale in metres. Indicative only. Dimensions are approximate. All information contained herein is gathered from sources we believe to be reliable. However we cannot guarantee it's accuracy and interested persons should rely on their own enquiries.



1 Ebsworth Road, Rose Bay