



Exquisite Custom-Designed Apartment in the Exclusive c1929 'Chatsworth House'



2



2

2/59-61 Wolseley Road, Point Piper

Sold Prior To Auction

Meticulously renovated and crafted to perfection, this incredible custom-designed apartment offers an exquisite home of understated luxury and timeless elegance in the exclusive c1929 Art Deco 'Chatsworth House'. A select palette of natural materials combined with the impeccable craftsmanship of its era create an ambience of old-world glamour and refined opulence. Soaring patterned ceilings, hardwood timber, Travertine and marble define the living spaces and bedrooms, while an open plan lounge and dining area is warmed in winter by a premium gas fireplace. A state-of-the-art marble kitchen is equipped with top-of-the-range European appliances, while interiors spill out to a north facing sun washed courtyard with direct street access. This ground floor residence is placed minutes to Double Bay village, Rose Bay promenade, harbour beaches, public transport and elite schools.

Property Features:

Exquisite custom designed apartment finished to perfection

Striking entrance foyer, gorgeous original timber floorboards

Stunning open plan living/dining with premium gas fireplace

Chef's marble kitchen, state-of-the-art European appliances

Property ID: L28024798

Property Type: Apartment

Richard Faludi

0430 059 426

richard.faludi@db.rh.com.au

Premium natural finishes of timber, marble, Travertine, glass

Both bedrooms with custom built-in robes and chic ensuites

Concealed guest powder room, concealed internal laundry

Beautiful original timber/glass doors and timeless fixtures

High period ceilings, air conditioning, extensive storage

North facing sunny courtyard with direct access to street

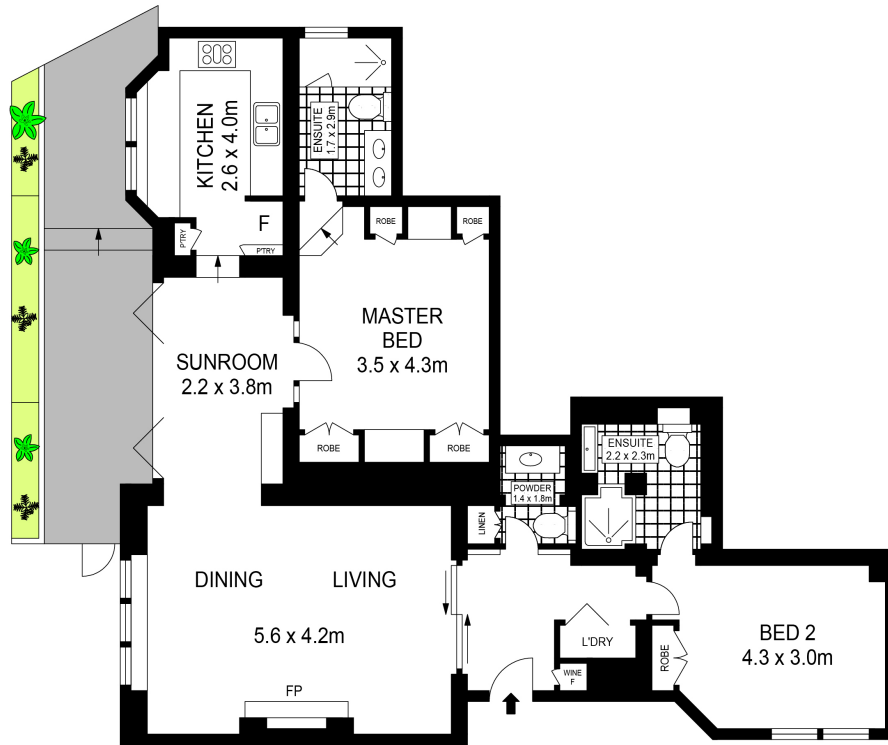
Integrated wine fridge, underfloor heating in one bathroom

Prestigious Art Deco building of eight with refurbished foyer

Moments to Double Bay village, Royal Motor Yacht Club

Minutes to Rose Bay promenade, elite schools, transport

Close to harbour beaches and celebrated waterfront dining



Scale in metres. Indicative only. Dimensions are approximate. All information contained herein is gathered from sources we believe to be reliable. However we cannot guarantee it's accuracy and interested persons should rely on their own enquiries.

2/59 Wolseley Road, Point Piper