

Architecturally-Designed Family Home,
Quiet Cul-De-Sac, 400m To Bondi Beach



5



3



2

112 Roscoe Street, Bondi Beach

Sold

A striking architectural design, impressive proportions and premium finishes unite in this stunning family residence to deliver the ultimate in coastal living within metres of the iconic Bondi Beach. Set in a sought-after cul-de-sac with a desirable north-to-rear aspect, this impeccable home reveals approx. 240sqm of accommodation over two light soaked levels. Soaring ceilings, American Oak and concrete flooring define vast open plan living and dining areas while a seamless transition is made to a fabulous sun soaked entertainers' deck with timber custom seating. Chef's will delight in the gourmet island kitchen with Smeg gas appliances, while the residence comprises four bedrooms altogether, the upper-level master features a chic Limestone ensuite and enjoys access to a sunlit balcony. With dual off-street parking, it is placed footsteps to neighbourhood shops, cafés and buses.

Property Features:

- Approx. 240sqm of accommodation over two light soaked levels
- Striking architectural design with premium quality finishes
- Vast open plan living/dining enjoys seamless outdoor flow
- Oversized n/facing sunny courtyard ideal for entertaining

Property ID: L5638321

Property Type: House

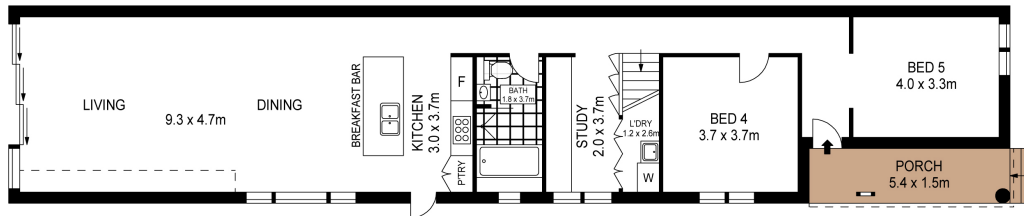
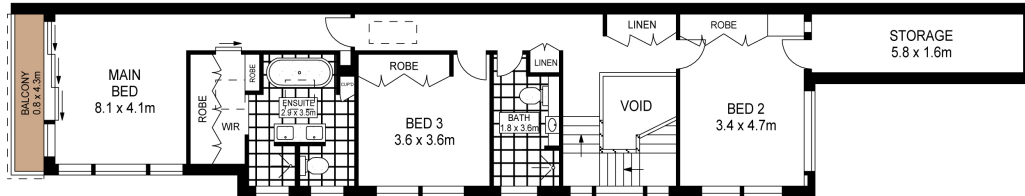
Garages: 2

Ric Serrao

0412 072 178

Ric.Serrao@db.rh.com.au

- Gourmet kitchen, Smeg gas appliances, stone breakfast/bar
- Integrated dishwasher, s/steel benchtop, ample storage
- Well-sized bedrooms, two appointed with built-in wardrobes
- Master with chic full sized ensuite opens to sunlit deck
- Ducted air conditioning, American Oak floors, 3m ceilings
- Three deluxe Limestone bathrooms, underfloor heating, alarm
- Polished concrete floors in kitchen, living and dining area
- Custom study, concealed internal laundry, video intercom
- Dual off-street parking, multiple skylights, attic storage
- Footsteps to Gould Street's village shops, cafés, boutiques
- Stroll to Harris Farm, Hall Street's celebrated bars/dining



Scale in metres. Indicative only. Dimensions are approximate. All information contained herein is gathered from sources we believe to be reliable. However we cannot guarantee it's accuracy and interested persons should rely on their own enquiries.



112 Roscoe Street, Bondi Beach