



A Great Family Home!



5



1



2

## 1/33 Jubilee Avenue, Brighton

Sold

Short walk to Brighton Primary School and day care. This well located home boasts a flexible floorplan of up to 5-bedrooms. With a spacious open living area, Tas Oak flooring throughout, air con and a cozy fireplace, this property offers a comfortable and inviting atmosphere. Having recently undergone a freshen throughout, there is nothing to do but simply move in and enjoy!

This well-maintained home boasts a building area of 148sqm and offers ample accommodation for a growing family. The kitchen is spacious with a laundry adjacent that could easily be upgraded to a second bathroom/toilet. Available to site is the fastest NBN – fibre to the premises – so perfect for work-from-home & all student needs.

Brighton is a fast growing municipality 25 minutes to Hobart. Just a short distance away are the IGA supermarket, Chemist, Doctors and much more. The new \$74 million High School is nearby and nearing completion to add further amenity to this wonderful area. Contact us today for more information and to schedule a viewing.

Offers Over \$450,000, this property is priced right with a motivated vendor!

Contact Matt Carne for further details

**Property ID:** L28352453

**Property Type:** House

**Building / Floor Area:** 148

**Open Parking:** 2

**Land Area:** 430.0 sqm

**Matt Carne**

0419571066

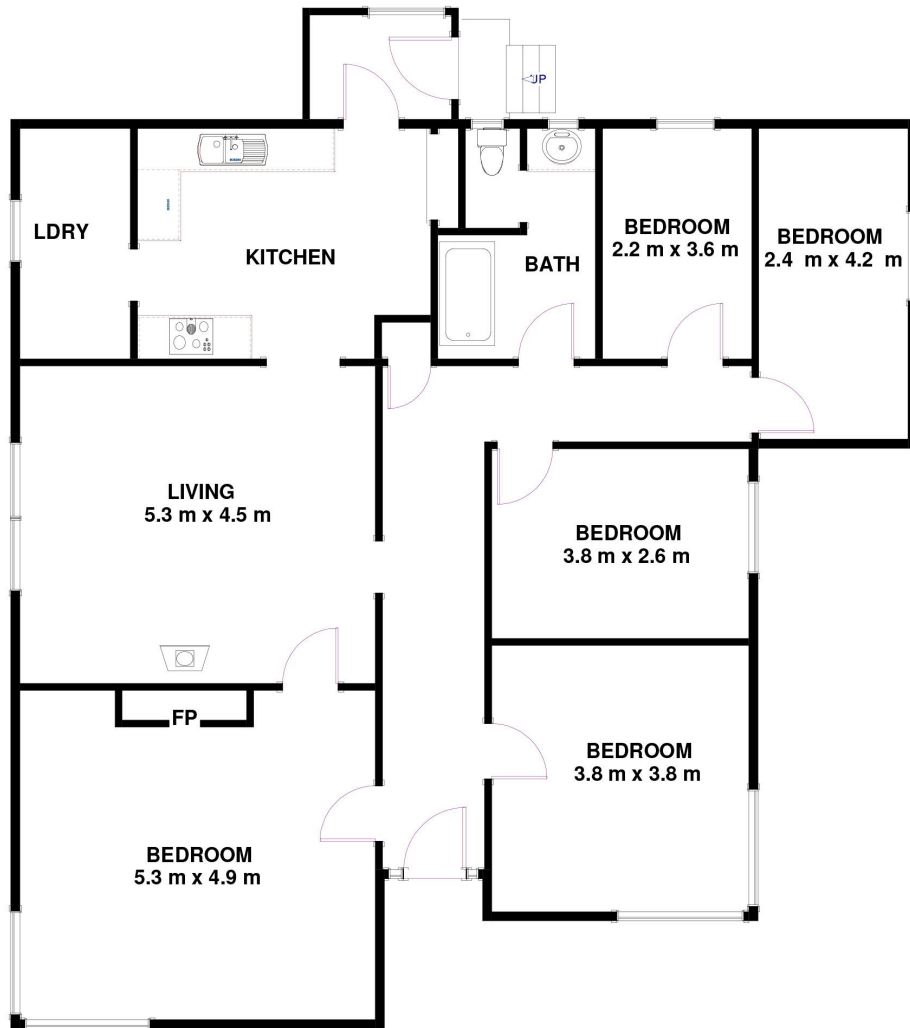
Matt.Carne@es.rh.com.au

The Vendor reserves the right to accept an offer at any time during the marketing period.

To arrange your inspection, please contact our office using the Contact Agent link on this page.

All measurements are approximate and details intended to be relied upon should be independently verified. The particulars contained in this advertisement do not form any contract. While care has been taken in its presentation, no representation is made and no responsibility is accepted for the accuracy of the whole or any part and interested persons are advised to make their own enquiries and satisfy themselves in all respects.

1/33 Jubilee Av, Brighton, TAS 7030  
Approx Internal Space 148 sqm



Disclaimer: All measurements and floor plan details are for informational purposes only. We make no warranties or representations, express or implied, as to the accuracy of this rendering. Independent property size verification is recommended. The approximate internal area measurement does not directly reflect the government evaluation of the property area.