



SOLD BY ROBERTA GRASSO



3



2



2

42/2 Bronberg Court, Southport

Sold for \$830,000 (Mar 25, 2024)

Discover the perfect townhouse at 42 Regal Palms, 2 Bronberg Court, Southport, offering an impressive array of features that cater to your every need. This three-bedroom, two-bathroom plus powder room partially renovated residence, presents a functional open-plan living space that is both practical and immaculately maintained with the added convenience of near by cafes, medical facilities, grocer, butcher, petrol station and chemist.

Step into the outdoor entertaining area which flows seamlessly from the open plan design where you can enjoy a morning coffee or sunbathe in light with the north facing courtyard which is also complete with a brand-new awning, providing shelter on rainy/sunny days while you relax and enjoy the fresh air. The convenience continues with a lockable carpark and an additional lockable gated carport, ensuring ample space for your vehicles with the added security.

Experience the refreshing coastal breeze flowing through the house, creating a comfortable and inviting atmosphere. In addition, this property offers access to communal entertaining areas, including a lap pool and BBQ facilities. Enjoy a swim or host gatherings with friends and family in these exclusive shared spaces.

Another notable advantage of this immaculate townhouse is its low body corporate fees, ensuring affordability without compromising on quality or amenities. You'll also appreciate

Property ID: L26043042

Property Type: Townhouse

Garages: 1

Carports: 1

Roberta Grasso

0450 797 570

roberta.grasso@elite.rh.com.au

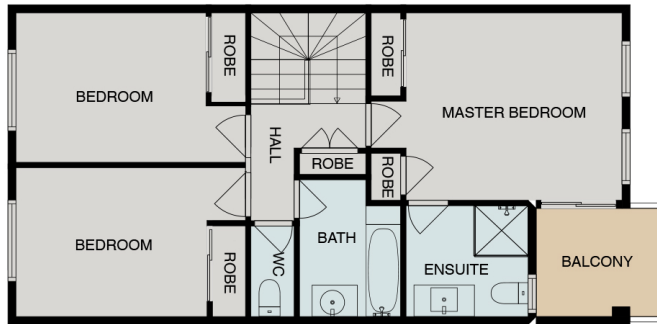
the direct access to the neighboring prestige Southport golf course, providing the perfect opportunity for leisurely walks or an enjoyable round of golf.

Key Features:

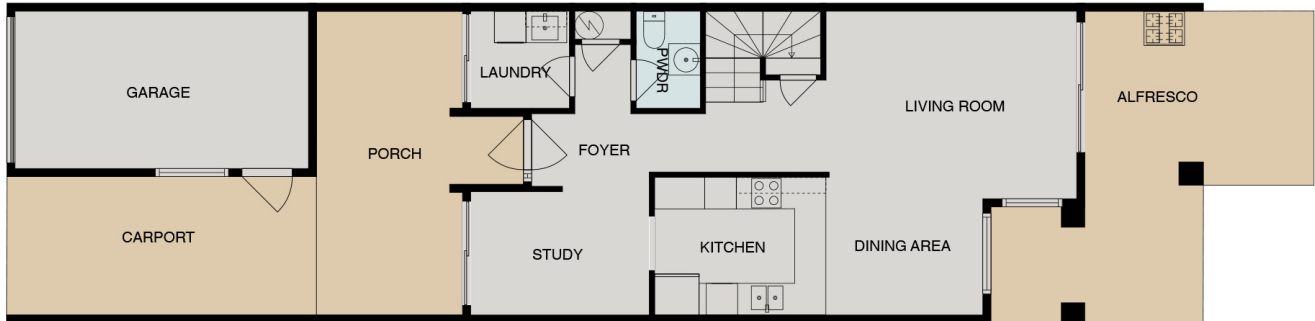
- Three bedrooms and 2.5 bathrooms
- Large laundry with direct access to the clothes line
- Outdoor entertaining area with a new awning
- Brand new air-conditioning in master bedroom
- Lock up garage with gated carport
- Communal entertaining areas including a lap pool, BBQ spots and library
- Sprinkler system in back garden
- Low body corporate fees
- Direct access to the Southport golf course
- Opposite Bronberg Plaza Shopping Centre
- Only 5 minutes from Cheuron Island and Surfers Paradise
- Close to many fabulous schools including Benowa State primary, Benowa State High, The Southport School, St Hilda's private school, St Kevins and Bellevue Park state school.

Don't miss the chance to own this exceptional townhouse at 42 Regal Palms, 2 Bronberg Court, which offers not only a comfortable and functional living space but also a range of desirable features including outdoor entertainment, parking convenience, communal amenities, and direct golf course access.

Contact Roberta Grasso on 0450797570 to register your interest at the open home and secure your slice of Southport's finest living.



1ST FLOOR



GROUND FLOOR

UNIT 42, 2 BRONBERG CT, SOUTHPORT

ELITE
Raine&Horne.

THIS PLAN IS FOR ILLUSTRATIVE PURPOSES ONLY. ALL DIMENSIONS ARE APPROXIMATE
POTENTIAL BUYERS SHOULD CONDUCT FURTHER RESEARCH BEFORE PROCEEDING
PRODUCED BY BEYATI MEDIA