

SOLD BY LORENZO BADALOTTI & BREE TISDELL



4



2



1

520/19 Imperial Parade, Labrador

Sold for \$830,000 (Sep 03, 2024)

This bright and spacious modern three bedroom, two bathroom apartment in the prestigious Sapphire at the Broadwater is sure to tick all of the boxes! Located only one block back from the beautiful Broadwater boardwalk, beaches and cafes/restaurants, you are spoilt for choice with endless activities and dining.

The living and dining rooms share a bright and open space, with easy access to the balcony. Your large North-facing balcony is sure to impress, with views of the Broadwater and room for entertaining small groups. Inside, the kitchen features stylish stone benchtops and modern appliances.

All three bedrooms plus the study are carpeted and allow in plenty of natural light, with the master suite additionally connecting to a large bathroom with a double vanity, and views of the Broadwater.

The Sapphire Building is a secure complex conveniently located just a street back from Marine Parade. Spend your mornings at the beach side cafes just 50 metres away or catch the bus to Harbour Town shopping from right outside your door. If that doesn't appeal to you, stay home and enjoy the resort-style facilities that Sapphire on the Broadwater has to offer. This includes a gorgeous resort-style pool, gymnasium, resident's lounge, heated spa, two BBQ areas and full time reception.

Property ID: L26135807

Property Type: Unit

Building / Floor Area: 132

Garages: 1

Lorenzo Badalotti

0459 411 606

lorenzo.badalotti@elite.rh.com.au

Property Highlights:

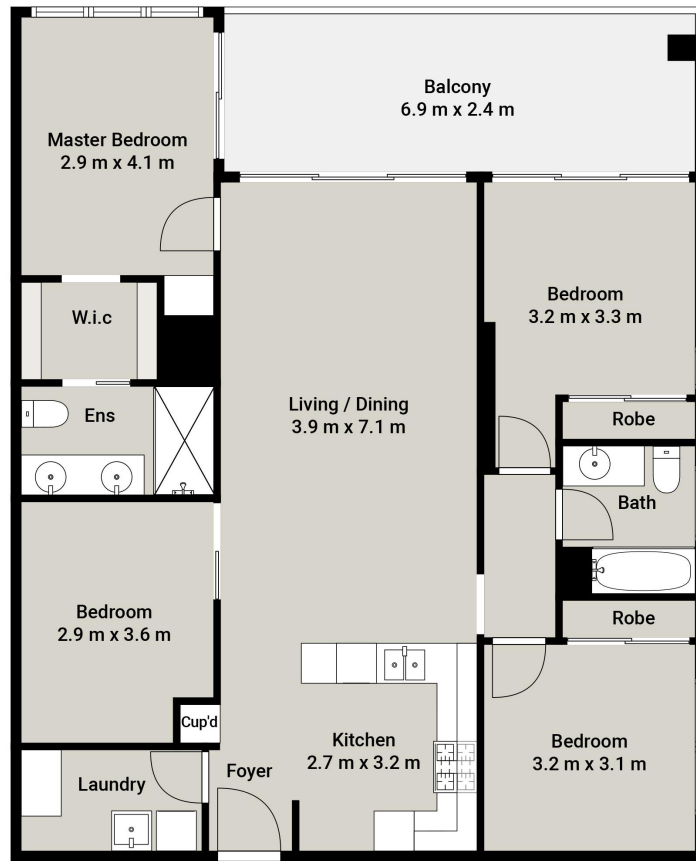
- Large open plan living, dining area that flows onto the spacious North-facing balcony
- Designer kitchen with stone bench tops, Bosch appliances, dishwasher, oven and a breakfast bar
- Master bedroom with walk-in-wardrobe and views of the Broadwater; ensuite bathroom with a double vanity and overhead shower
- Additional two carpeted bedrooms
- Separate media room/study or 4th bedroom
- Single underground secure car park
- Calming views North to the Broadwater
- Complex amenities include an resort-style pool, onsite gym, resident's lounge, heated spa, two BBQ areas and full time reception

Location:

- Less than 250m to the Broadwater
- 1.2km to Labrador State School
- 2.8km to Southport State High School
- 3.3km to Australia Fair Shopping Centre
- 3.3km to Harbour Town Premium Outlets
- 5km to Griffith University, Gold Coast Campus & Gold Coast University Hospital

Contact exclusive agents Lorenzo Badalotti or Bree Tisdell for more information.

Disclaimer: We have in preparing this information used our best endeavours to ensure that the information contained herein is true and accurate, but accept no responsibility and disclaim all liability in respect of any errors, omissions, inaccuracies or misstatements that may occur. Prospective purchasers should make their own enquiries to verify the information contained herein.



UNIT 520, 19 IMPERIAL PARADE, LABRADOR



ELITE
Raine&Horne.

THIS PLAN IS FOR ILLUSTRATIVE PURPOSES ONLY. ALL DIMENSIONS ARE APPROXIMATE
POTENTIAL BUYERS SHOULD CONDUCT FURTHER RESEARCH. BEFORE PROCEEDING
PRODUCED BY BEYATI MEDIA

INTERNAL | 110m²
EXTERNAL | 17m²
TOTAL | 127m²