



One Of Umina's Finest



4



2



2

4 Ena Place, Umina Beach

Sold for \$1,700,000 (Jul 25, 2024)

Step inside and be captivated by the grandeur of 4 Ena Place. Bathed in natural light, the multiple expansive spaces provided, sets the ideal environment for entertaining friends or simply enjoying quality time with your loved ones. The tasteful finishes add an air of sophistication to the already impressive ambiance. Plus, manicured low maintenance gardens.

Some stand-out features include:

- Four spacious sized bedrooms, huge main with walk in robe & ensuite
- Stunning lounge & dining with bay windows overlooking the bush backdrop
- Large formal living & dining areas
- Great kitchen with ample storage space, corner pantry, dishwasher
- Built in home elevator so no need to worry about the stairs
- Ducted air conditioning
- Downstairs powder room

Property ID: L28066821

Property Type: House

Garages: 2

Land Area: 576.0 sqm

David Keenan

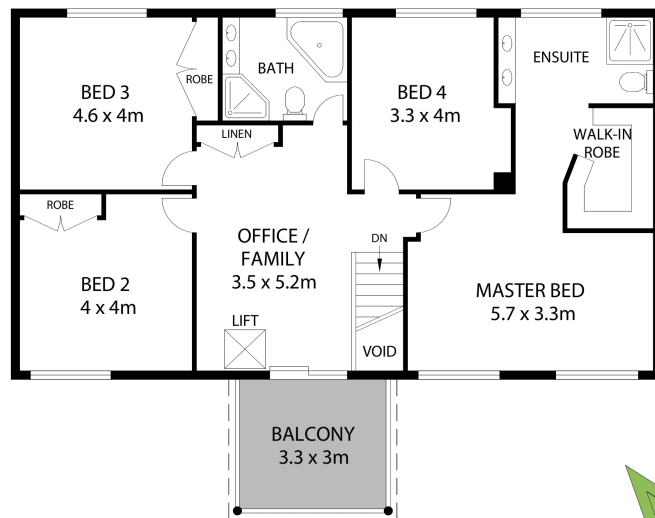
02 4341 5688

david.keenan@peninsula.rh.com.au

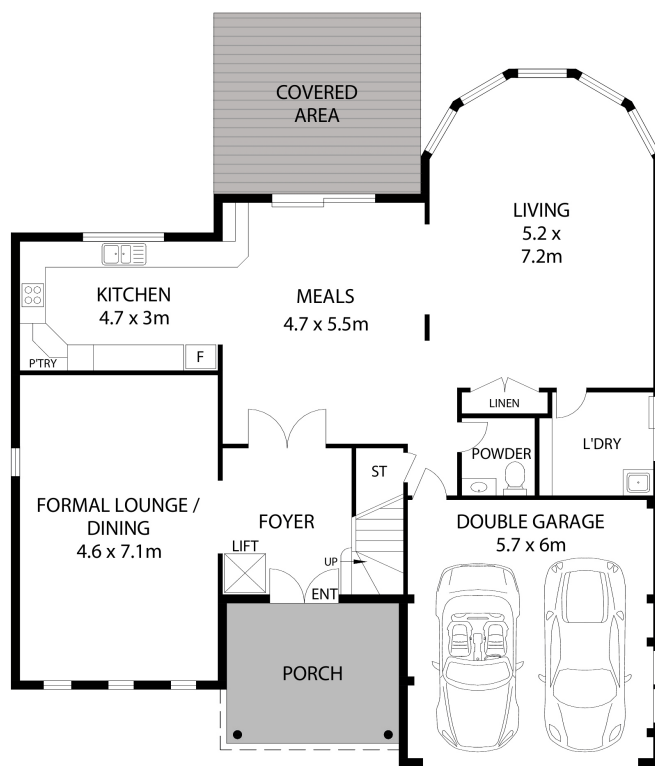
- Balinese outdoor entertaining cabana, spa

- Large double lock up garage

Disclaimer: We have obtained all information herein from sources we believe to be reliable; however, we cannot guarantee its accuracy. Prospective purchasers are advised to carry out their own investigations.



LEVEL ONE



GROUND LEVEL



All dimensions herein are approximate and gathered from sources believed to be reliable. Whilst every effort is made for the accuracy of our floor plans, interested parties should rely on their own enquiries.

Raine&Horne®

4 ENA PLACE,
UMINA BEACH



Internal Area: 293m²
External Area: 10m²
Land Area: 576m²