



Sold by Chris Haliloglu 0425 661 212



2



2



2

28/1 Kings Bay Avenue, Five Dock

Sold

Positioned in a highly desirable, much coveted foreshore precinct, within the serene & leafy "Kings Bay Estate", is this rare & inviting, apartment features two good sized bedrooms with two private balconies, resort style facilities, 2 bathrooms and double lock up garage, making it the perfect place to live and entertain all year round.

With a North East aspect, the apartment sees a lot of natural sunlight and allows a beautiful breeze to drift through. It also features, an open plan lounge and dining area with 2 balconies overlooking the pristine gardens of Kings Bay, making every day feel like a holiday.

So whether you're looking for your first home or are an investor, be sure that this one will surely impress you.

- Top floor apartment overlooking the gardens of Kings Bay, with two bedrooms and double lock up garage
- 2 double bedrooms with built-ins, main with walk in robe, split system air-conditioning and 2 balconies
- 2 Fully tiled bathrooms, internal laundry with dryer

Property ID: L27764236

Property Type: Apartment

Garages: 2

Sam Varrica

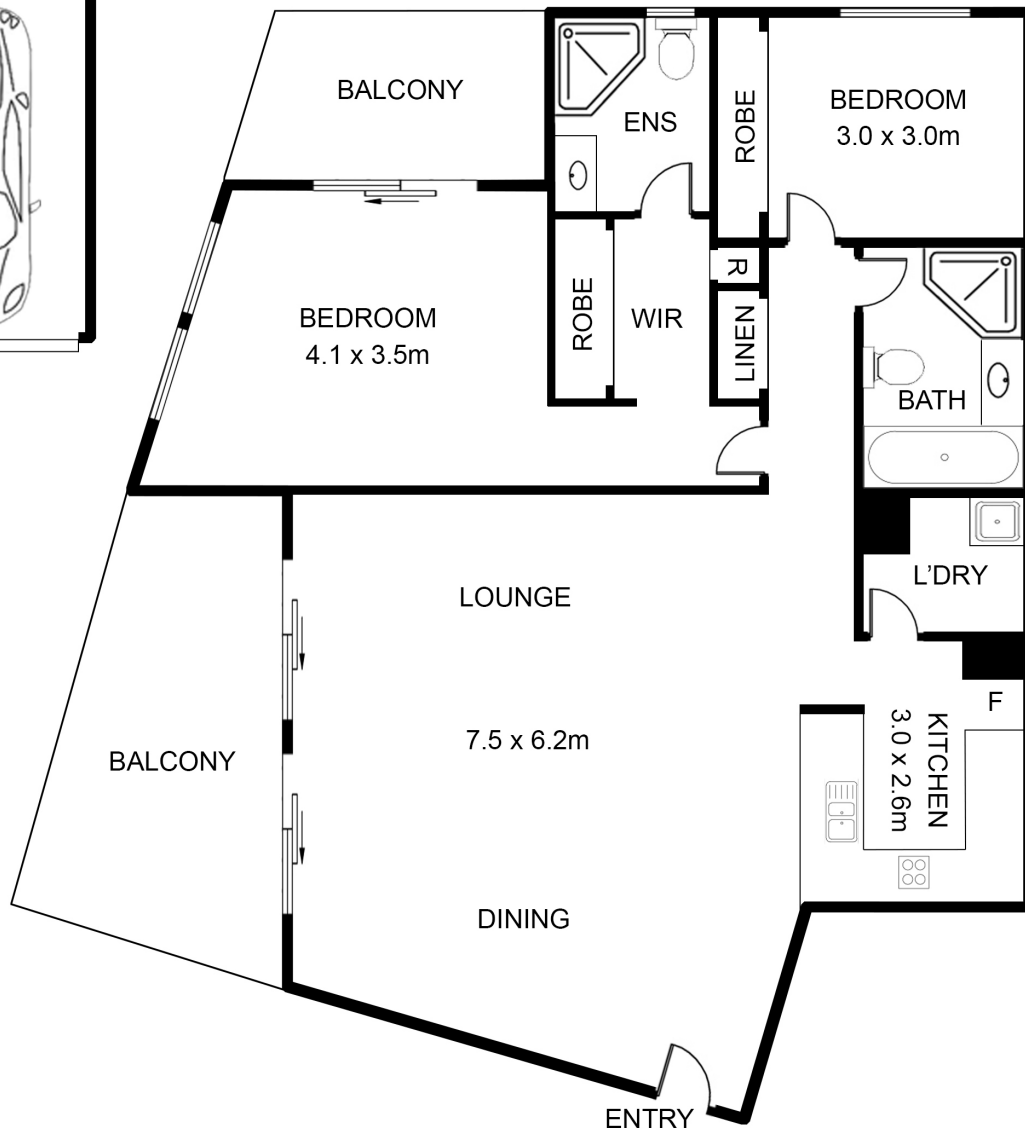
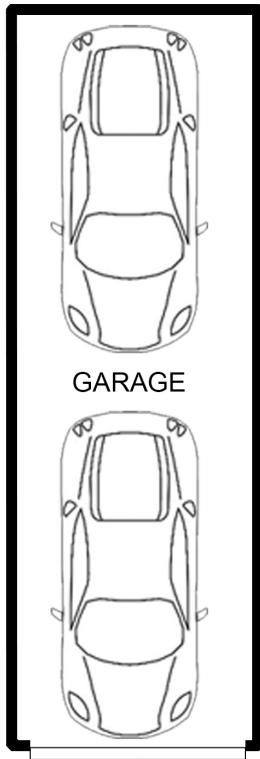
0430506002

sam.varrica@fivedock.rh.com.au

- Gas cooking & heating
- 2 North – East facing sun filled balconies overlooking a perfect leafy backdrop with privacy all around.
- Extra spacious, open plan living + dining room.
- Resort facilities including outdoor pool, BBQ area, gymnasium, & internal park with children's playground
- Internal access to secure lock up garage, plenty of visitor parking and intercoms for entrance.
- Great transport options + a short stroll to the upcoming Five Dock & Burwood Station "Metro" rail

Raine & Horne Five Dock

Drummoyne makes no statement, representation or warranty and assumes no legal liability in relation to the accuracy of the information provided. Interested parties should conduct their own due diligence in relation to each property they are considering purchasing. All photographs, maps and images are representative only for marketing purposes.



28/1 Kings Bay Avenue, Five Dock

DISCLAIMER
DIMENSIONS ARE APPROXIMATE AND SHOULD ONLY BE USED AS A GUIDE.
THEY ARE NOT TO SCALE AND NO LIABILITY WILL BE ACCEPTED.

Raine & Horne
FIVE DOCK / DRUMMOYNE