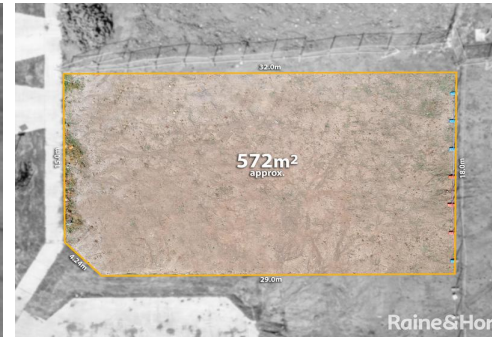




A Wonderful 572m² (approx.) in the Willow Estate



24 Leahy Circuit, Gisborne

Sold

Perfectly positioned to enjoy the best of the picturesque Macedon Ranges, this fantastic north facing 572m² (approx.) vacant block of land presents a brilliant opportunity for you to secure your future in the popular Willow Estate.

The residential dwelling site is well poised to capitalise on its stellar location within easy walking distance of the new Willowbank Primary School and Willowbank Early Learning Centre, with wonderful parks all part of the master planned Willow community.

This is that golden opportunity to build your very own dream home in an ideal location that celebrates natural beauty and a peaceful rural feel, while being conveniently connected to everything you need for a hassle-free modern lifestyle.

Less than a 10 minute drive to Gisborne township with its boutique shops, gourmet eateries, botanical garden, medical and leisure facilities, it's also close to Gisborne Secondary College, New Gisborne train station, and easy freeway access.

Property ID: L26430322

Property Type: Land

Land Area: 572.0 sqm

Jayden Manno

0421 736 736

jayden.manno@sunbury.rh.com.au