



Affordable Gem in Gisborne!



4



2



2

11 Vista Close, Gisborne

Sold for \$640,000 (Aug 01, 2024)

Nestled in a serene cul-de-sac, this home presents a practical and comfortable floorplan. The property boasts approximately 695m² of land and features: 4 bedrooms,

2 bathrooms and a double garage for 2 cars.

It comprises two distinct living areas, comprising a generously sized lounge and a combined kitchen, meal, and living space. Ample side access provides accommodation for a caravan, boat, trailer, or extra parking as needed.

Key highlights include a slow combustion fire for cozy winter nights, two split systems ensuring climate control, and a convenient double garage.

This property presents an exceptional opportunity for retirees, investors, and first-time home buyers alike.

Don't miss out on this chance to secure a slice of tranquil living in Gisborne!

Contact our team today!

*ID required upon inspection.

Property ID: L26881666

Property Type: House

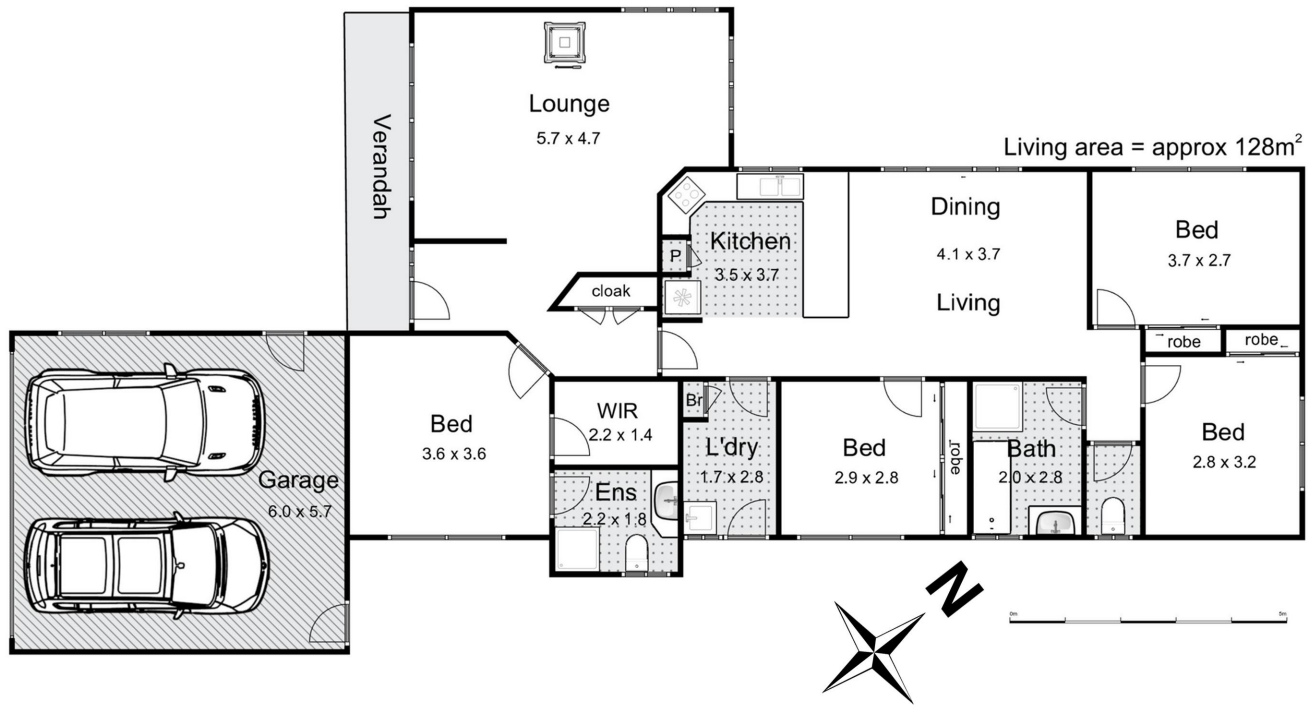
Garages: 2

Land Area: 695.0 sqm

David Oliver

0403 023 706

david.oliver@gisborne.rh.com.au



11 Vista Close, Gisborne

Whilst every attempt has been made to ensure the accuracy of the floor plan contained here, measurements of doors, windows, rooms and any other items are approximate and no responsibility is taken for any error, omission, or mis-statement. This plan is for illustrative purposes only and should be used as such by any prospective purchaser. The services, systems and appliances shown have not been tested and no guarantee as to their operability or efficiency can be given.

