



**Versatile Living in the Macedon Ranges - 652m<sup>2</sup>**



3



2



2

## 1 Sunny Park Close, Gisborne

**Sold for \$695,000 (Sep 06, 2024)**

Situated in the picturesque and tranquil enclave of Gisborne, 1 Sunny Park Close is a family home that embodies the perfect blend of comfort and functionality.

Upon entering this charming residence, you are greeted by an atmosphere of warmth and spaciousness. The home boasts three generously sized bedrooms all with BIR, the master bedroom offering a private ensuite, ensuring comfort and convenience.

The property includes a central bathroom, which caters to the needs of a busy family, these spaces are designed with both functionality and style in mind.

One of the most impressive aspects of this home is its three distinct living areas. The lounge/dining area serves as a sophisticated space for formal gatherings and special occasions, while the cozy family room/kitchen is the perfect setting for daily activities and casual meals. It seamlessly transitions to an undercover outdoor entertaining area, making it an ideal spot for alfresco dining and socializing.

The beautifully landscaped gardens provide a private, botanical retreat, enhancing the home's tranquility and aesthetic appeal. These gardens are well maintained, offering a serene environment that is both beautiful and functional.

**Property ID:** L27466338

**Property Type:** House

**Garages:** 2

**Land Area:** 652.0 sqm

**Ken Grech**

0418 509 710

ken.grech@gisborne.rh.com.au

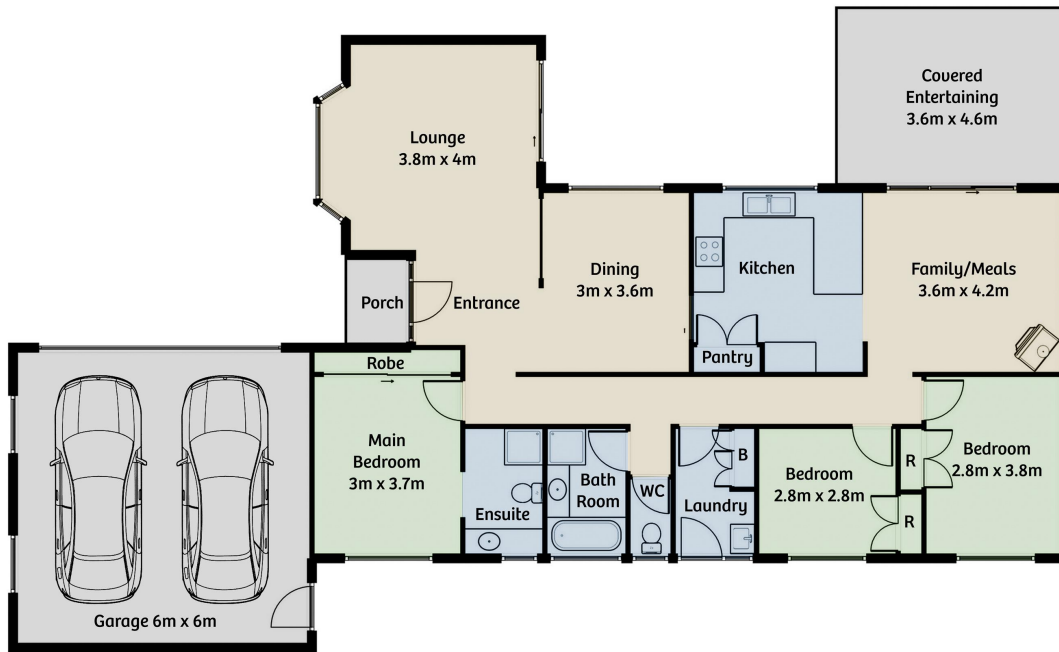
Additional features of this property include a double garage, which provides secure parking, and eight solar panels that promote energy efficiency and sustainability. Comfort is a priority, with a reverse cycle split system ensuring year-round climate control. During the cooler months, the wood heater in the family/meals area adds a touch of coziness and charm, creating a welcoming ambiance that is perfect for family gatherings.

Beyond the confines of this delightful home, the location offers even more advantages. Nestled in a family-friendly neighbourhood, the property provides easy access to local schools, parks, and shopping centers, ensuring that all essential amenities are within reach.

Contact our invested team today!

\*ID required upon inspection.

## 1 Sunny Park Close Gisborne



Disclaimer: Floor plan, measurements and appliances are approximate and are for illustrative purposes only.  
Please refer to draftsmans plans for accurate measurements.