



## Renovated Villa in the Heart of East Gosford



2



1



1

## 2/57 Brougham Street, East Gosford

Sold for \$675,000 (Aug 26, 2024)

Situated in the prime location of East Gosford, this stunning villa offers the perfect blend of comfort, convenience, and style, making it the ideal choice for modern living.

From trendy cafes and restaurants to lush parks and recreational facilities, everything you need is right at your doorstep.

Plus, with easy access to public transport and major roadways, commuting is a breeze.

Features include:

- 2 spacious bedrooms with built wardrobes.
- 1 beautifully appointed bathroom.
- Open plan living and dining area, perfect for entertaining guests or relaxing with family.
- Well-equipped kitchen with sleek appliances and ample storage space.
- Private courtyard, ideal for alfresco dining or enjoying your morning coffee.

**Property ID:** L3590196

**Property Type:** Villa

**Garages:** 1

**Sarah King**

0450 781 611

sarah.king@eastgosford.rh.com.au

- Single car garage for secure parking.

Council rates: \$1110.62 P/A

Water: \$912.89 P/A Plus usage

Strata: \$750.00 P/Q

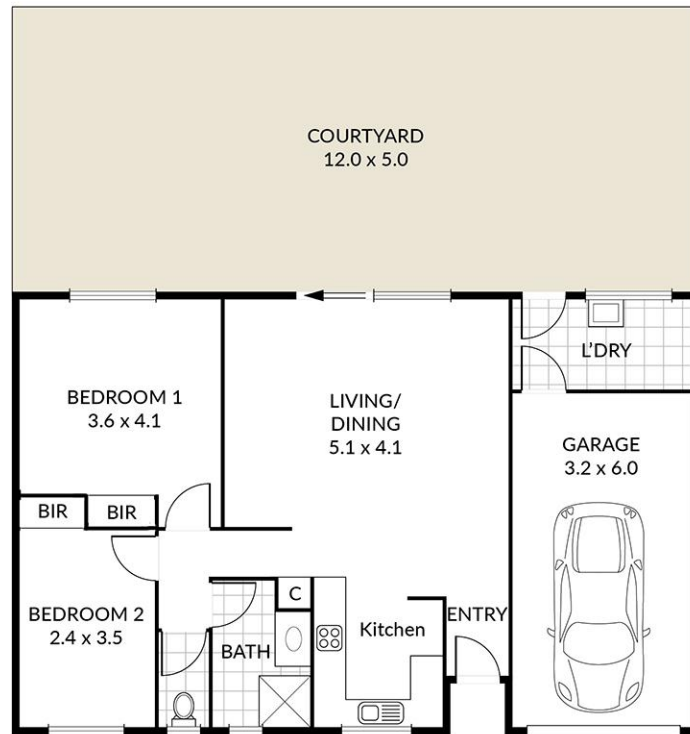
Expected rent: \$490 to \$520 P/W

Strata report available on request

Don't miss out on this incredible opportunity to call East Gosford home!

Contact us today to arrange a private inspection and start living the lifestyle you deserve.

Disclaimer: This website has been prepared for marketing purposes only and may be subject to change without notice. The information and illustrations contained in this website are indicative only and is not to be construed as advice, a recommendation or an offer for the sale or rent of property. Every care has been taken to verify the accuracy of the information contained in this document, but no warranty (either express or implied) is given by Raine & Horne or its agent, as to the accuracy of the contents. Prospective purchasers and/or tenants should conduct their own investigations into all matters relating to the proposed purchase and/or lease of the property.



2/57 Brougham St , East Gosford  
Internal 72m2 | External 60m2 | Total132m2

Disclaimer: Dimensions are approximate. We have obtained all information in this document from sources we believe to be reliable; however, we cannot guarantee its accuracy. Prospective purchasers are advised to carry out their own investigations.