



## Penthouse Gosford



3



2



2

**23/91-95 John Whiteway Drive, Gosford**

**Sold**

Have you been looking for that perfect Penthouse?

One that has uninterrupted Water views over Gosford's Harbour, with a view that can't be built out.

Set on the top floor at the Southern end of Panorama Towers sits this amazing opportunity. Presented in excellent but original condition allowing the successful buyer to add their touch, its potential is enormous they just don't build them this size anymore.

1. Entry Foyer
2. Large living room opening onto private balcony
3. Formal and informal dining areas.
4. 3 separate balconies with stunning water views
5. 3 bedrooms all with mirrored built-in robes
6. Large ensuite to the main
7. 2 Powder rooms
8. Large main bathroom with spa bath
9. 4 Separate storage cupboards
10. Internal Laundry
11. Huge kitchen with double oven, fridge, dishwasher, microwave oven and Island bench.

**Property ID:** L6659003

**Property Type:** Unit

**Building / Floor Area:** 224

**Garages:** 2

**Geoffrey Tilden**

0415 238 846

geoff.tilden@gosford.rh.com.au

12. Double Car space plus storage

Council Rates: \$1,111.00 PA

Water: \$830 PA

Strata : \$3,505 P/Qtr.

Unit Area: 224m2 plus 39m2

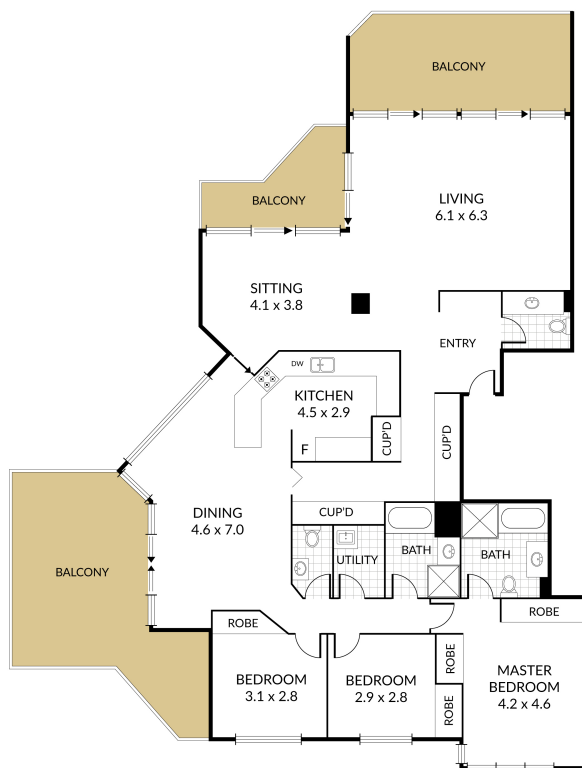
Contact:

Geoff Tilden 0415 238 846

Blake Dunn 0449 225 929

Open House: Saturday 10.30am – 11.00am

Disclaimer: This website has been prepared for marketing purposes only and may be subject to change without notice. The information and illustrations contained in this website are indicative only and is not to be construed as advice, a recommendation or an offer for the sale or rent of property. Every care has been taken to verify the accuracy of the information contained in this document, but no warranty (either express or implied) is given by Raine & Horne or its agent, as to the accuracy of the contents. Prospective purchasers and/or tenants should conduct their own investigations into all matters relating to the proposed purchase and/or lease of the property.



Internal 158m<sup>2</sup> External 49m<sup>2</sup> Total 207m<sup>2</sup>

**Disclaimer:** Dimensions are approximate. We have obtained all information in this document from sources we believe to be reliable; however, we cannot guarantee its accuracy. Prospective purchasers are advised to carry out their own investigations