



Perfectly Located 2-Bedroom Unit in East Gosford!



2



2



1

5/39-43 Melbourne St, East Gosford

Sold for \$560,000 (Apr 22, 2024)

Welcome home to comfort and convenience with this stunning ground floor unit located at 5/39-43 Melbourne Street, East Gosford. Boasting a thoughtful layout, two spacious bedrooms, two modern bathrooms, and a lock-up garage, this residence offers the ideal blend of functionality and style.

Key Features:

- 1.Prime Location:** Situated in the heart of East Gosford, this unit offers easy access to local schools, East Gosford shops, public transport, and the renowned Erina Fair Shopping Centre. Enjoy the convenience of urban living with everything you need right at your doorstep.
- 2.Recently Renovated:** Step into a fresh and inviting space as this unit has recently undergone a makeover. With brand new flooring and a fresh coat of paint, it radiates a modern charm that's sure to impress.
- 3.Spacious Living:** Relax and unwind in the generously sized living areas, perfect for both entertaining guests and enjoying quiet evenings at home. The open-plan design creates a seamless flow between the living, dining, and kitchen areas.
- 4.Two Bedrooms, Two Bathrooms:** Accommodate your family or guests comfortably with two

Property ID: L723092

Property Type: Apartment

Garages: 1

Sam Alexander

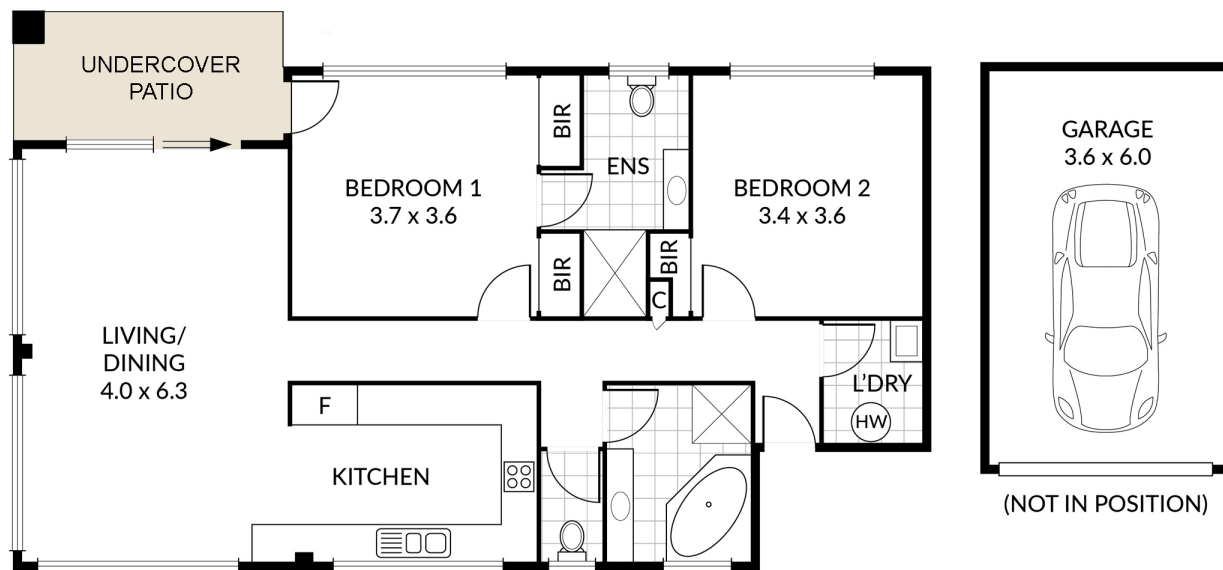
0431 592 165

sam.alexander@eastgosford.rh.com.au

well-appointed bedrooms and two modern bathrooms. The master bedroom features an ensuite for added convenience and privacy.

5. Secure Parking: Never worry about parking again with your own lock-up garage, providing secure storage for your vehicle and belongings.

Disclaimer: This website has been prepared for marketing purposes only and may be subject to change without notice. The information and illustrations contained in this website are indicative only and is not to be construed as advice, a recommendation or an offer for the sale or rent of property. Every care has been taken to verify the accuracy of the information contained in this document, but no warranty (either express or implied) is given by Raine & Horne or its agent, as to the accuracy of the contents. Prospective purchasers and/or tenants should conduct their own investigations into all matters relating to the proposed purchase and/or lease of the property.



5/39-41 Melbourne St, East Gosford

Internal 92m²

Disclaimer: Dimensions are approximate. We have obtained all information in this document from sources we believe to be reliable; however, we cannot guarantee its accuracy. Prospective purchasers are advised to carry out their own investigations.