



SPACIOUS APARTMENT WITH WATER & RESERVE VIEWS



3



2



2

6/84 John Whiteway Drive, Gosford

Sold

Known as "Aqua Vista"; this spacious modern unit in a boutique complex of 8 with level entry and no stairs from street; offers space, quality and privacy with water views. Featuring large open plan living area opening on to a private balcony with reserve and water views; modern kitchen with stone benchtops, gas stove and large pantry. There are 3 bedrooms; all are double size with built-in robe and main with a good size en-suite & completed with a large double secure parking with storage space. Within 5 minutes' drive to rail, hospital, Gosford CBD, shops, schools & waterfront.

Features: –

- Modern spacious apartment
- Small complex of 8
- End unit with level entry & no stairs from street
- Gated entry access to 2 apartments only
- Private reserve & water views

Property ID:	L9755476
Property Type:	Unit
Building / Floor Area:	167
Garages:	2

Belinda Harris
0431 068 992
belinda.harris@gosford.rh.com.au

- Secured 2 car parking with storage space
- Within 5 minutes' drive to Gosford CBD, waterfront, rail & schools

Details: –

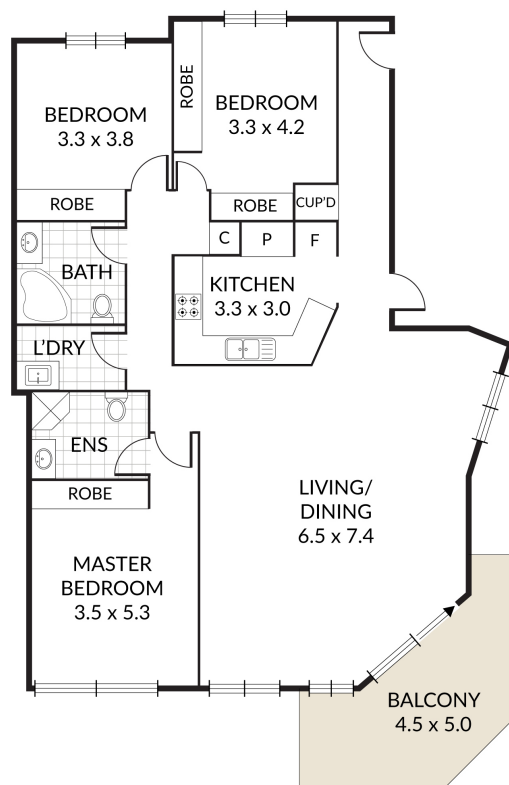
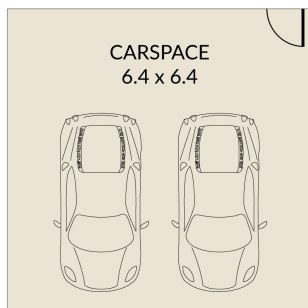
Strata Fees: \$1,432/qtr

Council Rates: \$277/qtr

Current rent: \$680/week till 31/12/2024

Gross area: 167sqm

Disclaimer: This website has been prepared for marketing purposes only and may be subject to change without notice. The information and illustrations contained in this website are indicative only and is not to be construed as advice, a recommendation or an offer for the sale or rent of property. Every care has been taken to verify the accuracy of the information contained in this document, but no warranty (either express or implied) is given by Raine & Horne or its agent, as to the accuracy of the contents. Prospective purchasers and/or tenants should conduct their own investigations into all matters relating to the proposed purchase and/or lease of the property.



6/84 John Whiteway Drive, Gosford

Internal 112m² | External 54m² | Total 166m²

Disclaimer: Dimensions are approximate. We have obtained all information in this document from sources we believe to be reliable; however, we cannot guarantee its accuracy. Prospective purchasers are advised to carry out their own investigations.